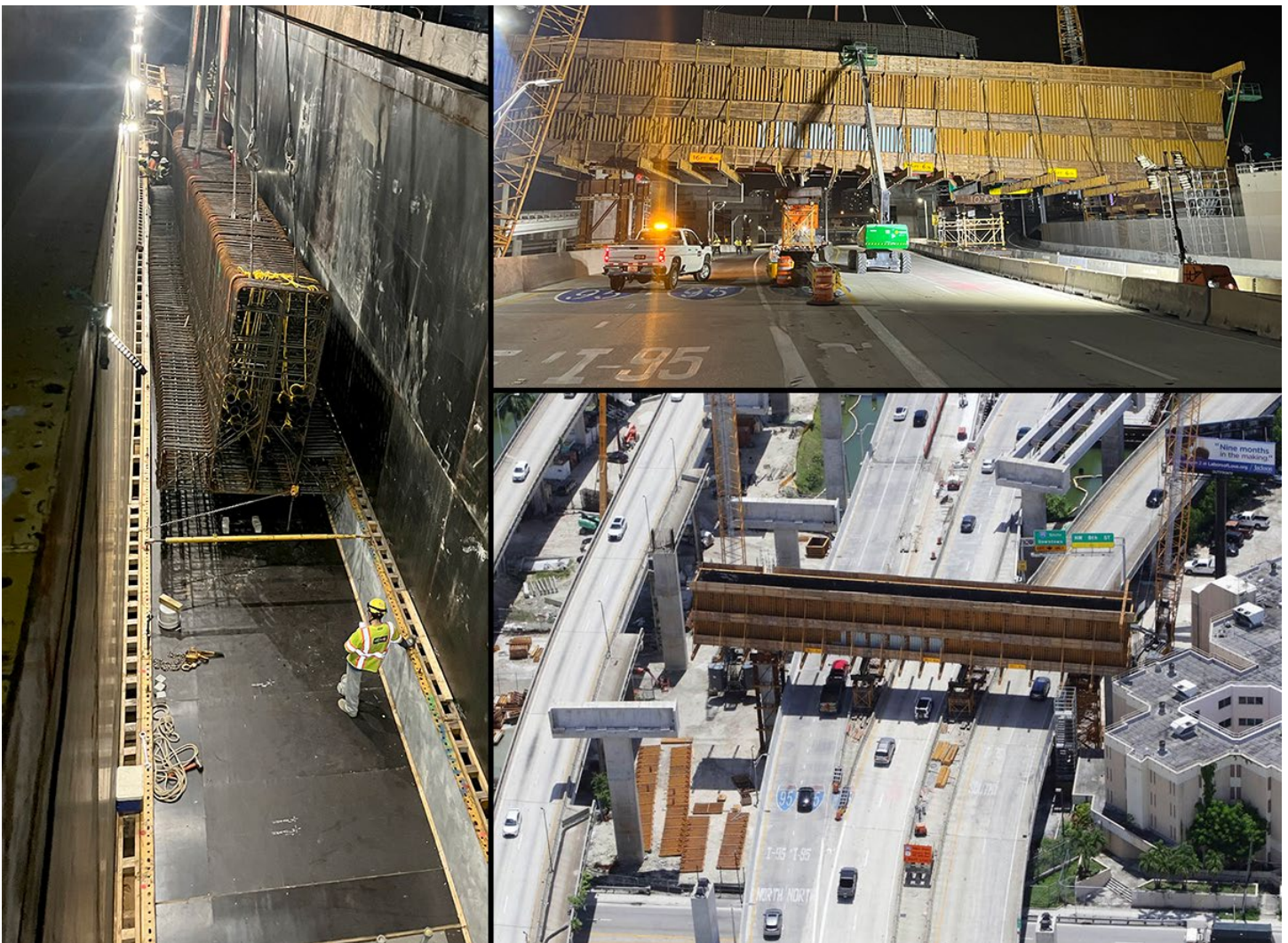


I-395/SR 836/I-95 DESIGN-BUILD PROJECT

Financial Project Numbers: 251688-1-52-01, 423126-1-52-01, 423126-2-52-01, 429300-2-52-01

07-08-2024



Ongoing reinforcing steel work at the bridge support structure over eastbound SR 836 just west of I-95

COMPLETE CLOSURES OF EASTBOUND INTERSTATE 395 (I-395) AND SR 836 RAMPS TO INTERSTATE 95 (I-95)

Continue reading on the next page...

- **MONDAY, JULY 8 THROUGH THURSDAY, JULY 11 AND THURSDAY, JULY 18** - All eastbound travel lanes on I-395 at I-95 and the eastbound SR 836 ramp to southbound I-95 will be closed between the hours of 10 p.m. and 5:30 a.m.
 - Drivers can:
 - Enter the northbound I-95 ramp and continue north
 - Exit at NW 62 Street and turn left to access the southbound I-95 ramp
 - Drivers heading to eastbound I-395 can use Exit 2D

TO VIEW A MAP OF THE DETOUR, PLEASE [CLICK HERE](#).

- **FRIDAY, JULY 12, SATURDAY, JULY 13 AND MONDAY, JULY 15 THROUGH WEDNESDAY, JULY 17** - All eastbound travel lanes on I-395 at I-95 and the eastbound SR 836 ramp to northbound I-95 will be closed between the hours of 11 p.m. and 8 a.m. on July 12 and 13, and between the hours of 10 p.m. and 5:30 a.m. on July 15 through July 17.
 - Drivers heading to eastbound I-395 can:
 - Access the southbound I-95 ramp
 - Exit at SW 7 Street/Brickell Avenue (Exit 1B), then turn left at SW 8 Street
 - Enter the northbound I-95 ramp, then access the ramp to eastbound I-395
 - Drivers heading north on I-95 can:
 - Access the southbound I-95/NW 8 Street ramp, then exit at the NW 8 Street/PortMiami ramp
 - Turn left at NW 8 Street
 - Turn left at NW 3 Avenue to access the northbound I-95 ramp

TO VIEW A MAP OF THE DETOUR, PLEASE [CLICK HERE](#).

COMPLETE CLOSURES OF EASTBOUND STATE ROAD (SR) 836 AT NW 17 AVENUE

Complete closures of eastbound SR 836 continue to be implemented from NW 17 Avenue to I-95, as noted below, to safely construct a bridge support structure that will span the entire width of eastbound SR 836 just west of I-95.

- Sunday, July 14 and Sunday, July 21 between the hours of 10 p.m. and 5:30 a.m.
- Friday, July 19 and Saturday, July 20 between 11 p.m. and 9 a.m.

The detours noted below and shown [HERE](#) will be in place to guide drivers around the work area. Drivers on eastbound SR 836 will:

- Exit at NW 17 Avenue, then continue south across NW 7 Street
- Turn left at SW 1 Street and continue east

Continue reading on the next page...

- Turn right at South Miami Avenue
- Turn right to access the ramp to I-95 **north** or **south**
- Drivers going to **Biscayne Boulevard and the MacArthur Causeway** can continue east on SW 1 Street and turn left on Biscayne Boulevard to connect with the MacArthur Causeway entrance ramp at NE 11 Terrace

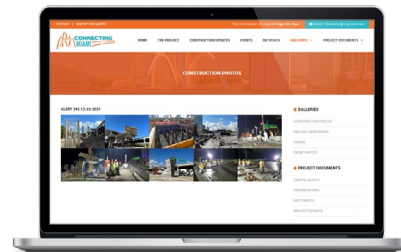
Drivers on NW 12 Avenue wanting to access eastbound SR 836, I-95, Biscayne Boulevard, and the MacArthur Causeway can continue south on NW 12 Avenue, turn left at SW 1 Street, and follow the detours above.

ABOUT THE PROJECT

The I-395/SR 836/I-95 Design-Build Project will add capacity, enhance the flow of traffic and safety and improve access along I-395, SR 836 and I-95.



**To view a video of the project,
please visit:**
i395-miami.com/project-video



**To view updated project photos,
please visit:**
i395-miami.com/construction-photos

Please note that this schedule may change due to bad weather or other unforeseen conditions.

The work is part of the I-395/SR 836/I-95 Design-Build Project that will reconstruct the I-395 corridor from the SR 836/I-395/I-95 (Midtown) Interchange to the MacArthur Causeway Bridge, including the construction of a Signature Bridge over NE 2 Avenue and Biscayne Boulevard; double-deck SR 836 from west of NW 17 Avenue to the Midtown Interchange and the replacement of the concrete pavement on I-95 from NW 8 Street to NW 29 Street.

For additional information on the project please contact Oscar Gonzalez at 786-280-0983 or via email at Oscar.Gonzalez2@dot.state.fl.us. Additional project information can be found on the project website, www.I-395miami.com.

For information on scheduled lane closures on FDOT Construction Projects that affect traffic to/from and in Miami Beach, please [click here](#).