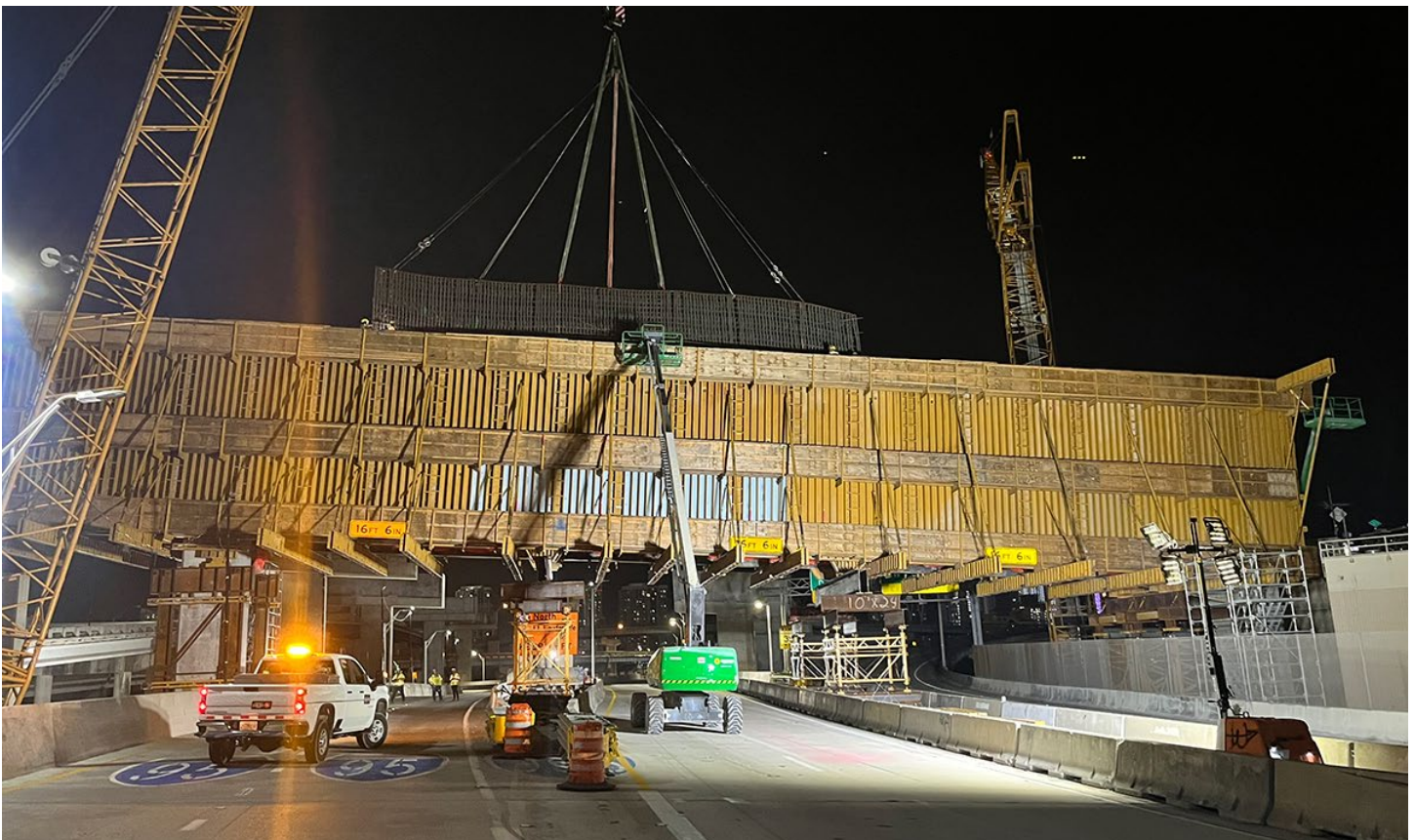


I-395/SR 836/I-95 DESIGN-BUILD PROJECT

Financial Project Numbers: 251688-1-52-01, 423126-1-52-01, 423126-2-52-01, 429300-2-52-01

07-02-2024



Installation of reinforcing steel cage for a bridge support structure over eastbound SR 836

SOUTHBOUND I-95 RAMP TO EASTBOUND I-395 DETOUR

- **TUESDAY, JULY 2** - The southbound I-95 ramp to eastbound I-395 will be closed as needed between the hours of 11:45 p.m. and 4 a.m. for concrete pile delivery. Drivers can:
 - Continue south on I-95, then exit at the SW 7 Street/Brickell Avenue (Exit 1B) ramp
 - Continue to SW 8 Street, then turn left to access the northbound I-95 ramp
 - Continue north on I-95 and access the ramp to eastbound I-395

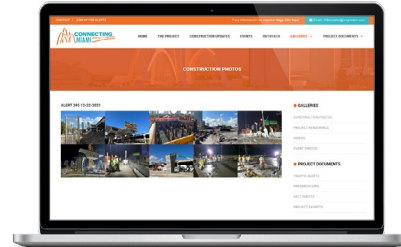
Continue reading on the next page...

ABOUT THE PROJECT

The I-395/SR 836/I-95 Design-Build Project will add capacity, enhance the flow of traffic and safety and improve access along I-395, SR 836 and I-95.



To view a video of the project,
please visit:
i395-miami.com/project-video



To view updated project photos,
please visit:
i395-miami.com/construction-photos

Please note that this schedule may change due to bad weather or other unforeseen conditions.

The work is part of the I-395/SR 836/I-95 Design-Build Project that will reconstruct the I-395 corridor from the SR 836/I-395/I-95 (Midtown) Interchange to the MacArthur Causeway Bridge, including the construction of a Signature Bridge over NE 2 Avenue and Biscayne Boulevard; double-deck SR 836 from west of NW 17 Avenue to the Midtown Interchange and the replacement of the concrete pavement on I-95 from NW 8 Street to NW 29 Street.

For additional information on the project please contact Oscar Gonzalez at 786-280-0983 or via email at Oscar.Gonzalez2@dot.state.fl.us. Additional project information can be found on the project website, www.i-395miami.com.

For information on scheduled lane closures on FDOT Construction Projects that affect traffic to/from and in Miami Beach, please [click here](#).