



I-395/SR 836/I-95 DESIGN-BUILD PROJECT

Financial Project Numbers: 251688-1-52-01, 423126-1-52-01, 423126-2-52-01, 429300-2-52-01

06-19-2024

WEEKLY PROJECT UPDATE

ONGOING COMPLETE CLOSURES OF EASTBOUND STATE ROAD (SR) 836 AT NW 17 AVENUE

Complete closures of eastbound State Road (SR) 836 continue to be implemented from NW 17 Avenue to I-95, as noted below, to safely construct a bridge support structure that will span the entire width of eastbound SR 836 just west of I-95.

- Thursday, June 27, between 10 p.m. and 5:30 a.m.
- Friday, June 28 and Saturday, June 29, between 11 p.m. and 7:30 a.m.

The detours noted below and shown [HERE](#) will be in place to guide drivers around the work area.

Drivers on eastbound SR 836 will:

- Exit at NW 17 Avenue, then continue south across NW 7 Street
- Turn left at SW 1 Street and continue east
- Turn right at South Miami Avenue
- Turn right to access the ramp to I-95 **north** or **south**
- Drivers going to **Biscayne Boulevard and the MacArthur Causeway** can continue east on SW 1 Street and turn left on Biscayne Boulevard to connect with the MacArthur Causeway entrance ramp at NE 11 Terrace

Drivers on NW 12 Avenue wanting to access eastbound SR 836, I-95, Biscayne Boulevard, and the MacArthur Causeway can continue south on NW 12 Avenue, turn left at SW 1 Street, and follow the detours above.

I-95 ONGOING CONSTRUCTION ACTIVITIES

- Installation of Intelligent Transportation System devices
- Concrete pavement replacement on I-95 between NW 8 Street and NW 17 Street
- Driving concrete piles into the ground for foundation construction between I-395 and NW 8 Street

Continue reading on the next page...

- Construction of a new bridge over NW 17 Street on the SR 836/I-395 ramps to northbound I-95
- Construction of new ramp superstructure over SB I-95 for the new WB I-395 ramp to SB I-95
- Installation of new guardrail
- Traffic railing retrofit on several bridges

FULL NORTHBOUND I-95 CLOSURES FOR TRAFFIC SHIFT

- **TUESDAY, JUNE 25** - All northbound I-95 lanes will be closed from just north of NW 8 Street to north of NW 17 Street between the hours of 10 p.m. and 5:30 a.m. The closures are necessary to shift all the northbound travel lanes from NW 8 Street to NW 17 Street to the right side of the roadway. Northbound I-95 drivers can:
 - Access the eastbound I-395 ramp, then exit at NE 2 Avenue/Biscayne Boulevard (Exit 2B)
 - Turn right at NE 2 Avenue, then turn right at NE 11 Street
 - Turn right at NE 1 Avenue, then access the ramp to I-95 to continue north

TO VIEW A MAP OF THE DETOUR PLEASE [CLICK HERE](#)

FULL CLOSURE OF SOUTHBOUND I-95 AT SR 836

- **SUNDAY, JUNE 23** - All southbound lanes on I-95 will be closed at SR 836 between the hours of 11:45 p.m. and 5:30 a.m. to move a crane across the roadway. The southbound I-95 ramp to eastbound I-395 will also be closed during this time frame.
 - Non-Tolled detour route for southbound I-95:
 - Exit at the SR 836 West Ramp, then exit at NW 14 Street
 - Turn left at NW 12 Avenue, then turn left at NW 11 Street
 - Turn right at NW 8 Street Road, then turn left at NW 8 Street
 - Turn right at NW 3 Court to access the I-95 south ramp after NW 2 Street
 - Tolled detour route for southbound I-95:
 - Exit at the SR 836 West Ramp, then exit at NW 12 Avenue
 - Turn left at NW 12 Avenue to access the SR 836 east entrance ramp
 - Continue east on SR 836 to access the I-95 south ramp
 - Non-Tolled detour route for ramp to eastbound I-395:
 - Exit at the SR 836 West Ramp, then exit at NW 14 Street
 - Turn left at NW 12 Avenue, then turn left at NW 11 Street
 - Turn right at NW 8 Street Road, then turn left at NW 8 Street
 - Continue east on NW 8 Street, then turn left at Biscayne Boulevard to access the A1A North/Miami Beach ramp
 - Tolled detour route for ramp to eastbound I-395:
 - Exit at the SR 836 West Ramp, then exit at NW 12 Avenue
 - Turn left at NW 12 Avenue to access the SR 836 east entrance ramp
 - Continue east on SR 836 to access eastbound I-395

TO VIEW A MAP OF THE DETOUR PLEASE [CLICK HERE](#)

Continue reading on the next page...

I-95 LANE CLOSURES

- **WEDNESDAY, JUNE 19 THROUGH FRIDAY, JUNE 21 AND SUNDAY, JUNE 23 THROUGH FRIDAY, JUNE 28** - Up to four lanes on southbound I-95 from NW 29 Street to NW 8 Street will be closed as needed between the hours of 9 p.m. and 5:30 a.m. The closure on Fridays will be implemented between the hours of 11 p.m. and 11 a.m.
- **WEDNESDAY, JUNE 19 THROUGH FRIDAY, JUNE 21 AND SUNDAY, JUNE 23 THROUGH FRIDAY, JUNE 28** - Up to four lanes on northbound I-95 will be closed as needed from NW 8 Street to NW 29 Street between the hours of 9 p.m. and 5:30 a.m. The closure on Fridays will be implemented between the hours of 11 p.m. and 11 a.m.

NORTHBOUND I-95 RAMP TO WESTBOUND SR 836 DETOUR

- **TUESDAY, JUNE 25** - The northbound I-95 ramp to westbound SR 836 will be closed between the hours of 10 p.m. and 5:30 a.m.
 - Drivers can:
 - Enter the eastbound I-395 ramp
 - Exit at NE 2 Avenue/Biscayne Boulevard (Exit 2B), then turn right on NE 2 Avenue
 - Turn right on NE 11 Street
 - Turn right on NE 1 Avenue to access westbound I-395 to continue onto westbound SR 836

TO VIEW A MAP OF THE DETOUR PLEASE [CLICK HERE](#).

SOUTHBOUND I-95 RAMP TO EASTBOUND I-395 DETOUR

- **THURSDAY, JUNE 20 THROUGH FRIDAY, JUNE 21** - The southbound I-95 ramp to eastbound I-395 will be closed as needed between the hours of 1 a.m. and 4 a.m. Drivers can:
 - Continue south on I-95, then exit at the SW 7 Street/Brickell Avenue (Exit 1B) ramp
 - Continue to SW 8 Street, then turn left to access the northbound I-95 ramp
 - Continue north on I-95 and access the ramp to eastbound I-395

SOUTHBOUND I-95 RAMP TO NW 8 STREET DETOUR

- **THURSDAY, JUNE 20** - The southbound I-95 ramp to NW 8 Street will be closed as needed between the hours of 9 p.m. and 5:30 a.m. Drivers can:
 - Continue south on I-95, then exit at the SW 7 Street/Brickell Avenue (Exit 1B) ramp
 - Continue to SW 8 Street, then turn left to access the northbound I-95 ramp
 - Continue north on I-95 and exit at the NW 2 Street/Arena (Exit 2B) ramp
 - Continue north on NW 3 Avenue to connect with NW 8 Street

TO VIEW A MAP OF THE DETOUR, PLEASE [CLICK HERE](#).

Continue reading on the next page...

NW 8 STREET RAMP TO NORTHBOUND I-95 CLOSURE

- **TUESDAY, JUNE 25** - The NW 8 Street ramp to northbound I-95 will be closed between the hours of 10 p.m. to 5:30 a.m. Drivers can:
 - Go east on NW 8 Street
 - Turn left on NE 1 Avenue,
 - Enter the westbound I-395 ramp to access northbound I-95

TO VIEW A MAP OF THE DETOUR PLEASE [CLICK HERE](#).

I-395 ONGOING CONSTRUCTION ACTIVITIES



Crews completing the final closure pour for one of the signature bridge arches. Crews used cranes and concrete buckets to deliver 25 cubic yards of concrete over 220 feet in the air to complete the arch.

Continue reading on the next page...

- Construction of signature bridge arch foundations east of Biscayne Boulevard
- Driving steel sheets into the ground west of NE 2 Avenue adjacent to I-395 and in other areas along the signature bridge site
- Nighttime Auger Cast Pile installation for support tower foundations from east of Biscayne Boulevard to NE 1 Avenue between I-395 and NE 13 Street including in the median area of Biscayne Boulevard
- Ongoing work at the six signature bridge arches including placement of precast arch segments
- Preparation for the next concrete pour at the signature bridge center pier structure foundation located between Biscayne Boulevard and NE 2 Avenue just north of I-395
- Nighttime roadway operations on I-395 from MacArthur Causeway to I-95
- Nighttime erection of precast arch segments east of Biscayne Boulevard
- Daytime and nighttime demolition of I-395 bridges from approximately NE 1 Avenue to west of NW 3 Avenue
- Construction of support structures for construction of the signature bridge deck

COMPLETE CLOSURES OF EASTBOUND INTERSTATE 395 (I-395) AND SR 836 RAMPS TO INTERSTATE 95 (I-95)

The closures noted below will be implemented to continue the construction of the overhead bridge support structure on eastbound SR 836 just west of I-95:

- **WEDNESDAY, JUNE 19 THROUGH SATURDAY, JUNE 22 AND WEDNESDAY, JUNE 26** - All eastbound travel lanes on I-395 at I-95 and the eastbound SR 836 ramp to southbound I-95 will be closed between the hours of 10 p.m. and 5:30 a.m. The closures on June 21 and June 22 will be implemented between the hours of 11 p.m. and 7:30 a.m.
 - Drivers can:
 - Enter the northbound I-95 ramp and continue north
 - Exit at NW 62 Street and turn left to access the southbound I-95 ramp
 - Drivers heading to eastbound I-395 can use Exit 2D

TO VIEW A MAP OF THE DETOUR, PLEASE [CLICK HERE](#).

- **MONDAY, JUNE 24 AND TUESDAY, JUNE 25** - All eastbound travel lanes on I-395 at I-95 and the eastbound SR 836 ramp to northbound I-95 will be closed between the hours of 10 p.m. and 5:30 a.m.
 - Drivers heading to eastbound I-395 can:
 - Access the southbound I-95 ramp
 - Exit at SW 7 Street/Brickell Avenue (Exit 1B), then turn left at SW 8 Street
 - Enter the northbound I-95 ramp, then access the ramp to eastbound I-395
 - Drivers heading north on I-95 can:
 - Access the southbound I-95/NW 8 Street ramp, then exit at the NW 8 Street/PortMiami ramp
 - Turn left at NW 8 Street
 - Turn left at NW 3 Avenue to access the northbound I-95 ramp

TO VIEW A MAP OF THE DETOUR, PLEASE [CLICK HERE](#).

Continue reading on the next page...

I-395 MAINLINE LANE CLOSURES

- **WEDNESDAY, JUNE 19 THROUGH FRIDAY, JUNE 21 AND SUNDAY, JUNE 23 THROUGH FRIDAY, JUNE 28** - One lane on mainline eastbound I-395 will be closed as needed from I-95 to Biscayne Boulevard between the hours of 10 p.m. and 5:30 a.m.
- **WEDNESDAY, JUNE 19 THROUGH FRIDAY, JUNE 21 AND SUNDAY, JUNE 23 THROUGH FRIDAY, JUNE 28** - Up to two lanes on mainline westbound I-395 will be closed as needed from Biscayne Boulevard to I-95 between the hours of 10 p.m. and 5:30 a.m.

DAYTIME FULL CLOSURES OF NW 14 STREET FOR BRIDGE DEMOLITION

- Closures of NW 14 Street from NW 3 Avenue to NW 1 Place between the hours 8 a.m. to 4 p.m. continue as needed to safely remove sections of bridges over the roadway. The contractor has substantially completed the removal of the concrete roadway deck and is now removing the steel girders. The closures will be implemented Mondays through Saturdays until further notice. NW 2 Avenue will also be closed between NW 13 Street and NW 14 Street. Nearby residents and businesses should anticipate elevated noise levels during the demolition activities. The contractor will implement measures to minimize dust impacts. The operations will involve large machinery and walking through the work zone is strictly prohibited. Drivers and pedestrians can use the detours shown [HERE](#).
 - Drivers on eastbound NW 14 Street can:
 - Turn right on NW 3 Avenue, then turn left on NW 13 Street
 - Turn left on NW 1 Place to connect with NW 14 Street
 - Drivers on westbound NW 14 Street can:
 - Turn right on NW 1 Court, then turn left on NW 15 Street
 - Turn right on NW 2 Avenue, then turn left on NW 16 Street
 - Turn left on NW 3 Avenue to connect with NW 14 Street

LANE CLOSURE ON NE 1 AVENUE AND NE 13 STREET

- **WEDNESDAY, JUNE 19 THROUGH FRIDAY, JUNE 21 AND SUNDAY, JUNE 23 THROUGH FRIDAY, JUNE 28** - One lane on NE 1 Avenue will be closed from south of NE 13 Street to south of NE 14 Street between the hours of 9 a.m. and 3:30 p.m. and 10 p.m. and 5:30 a.m. for curb and gutter and sidewalk work. One lane on NE 13 Street between NE 2 Avenue and NE 1 Avenue will also be closed as needed during this time frame.

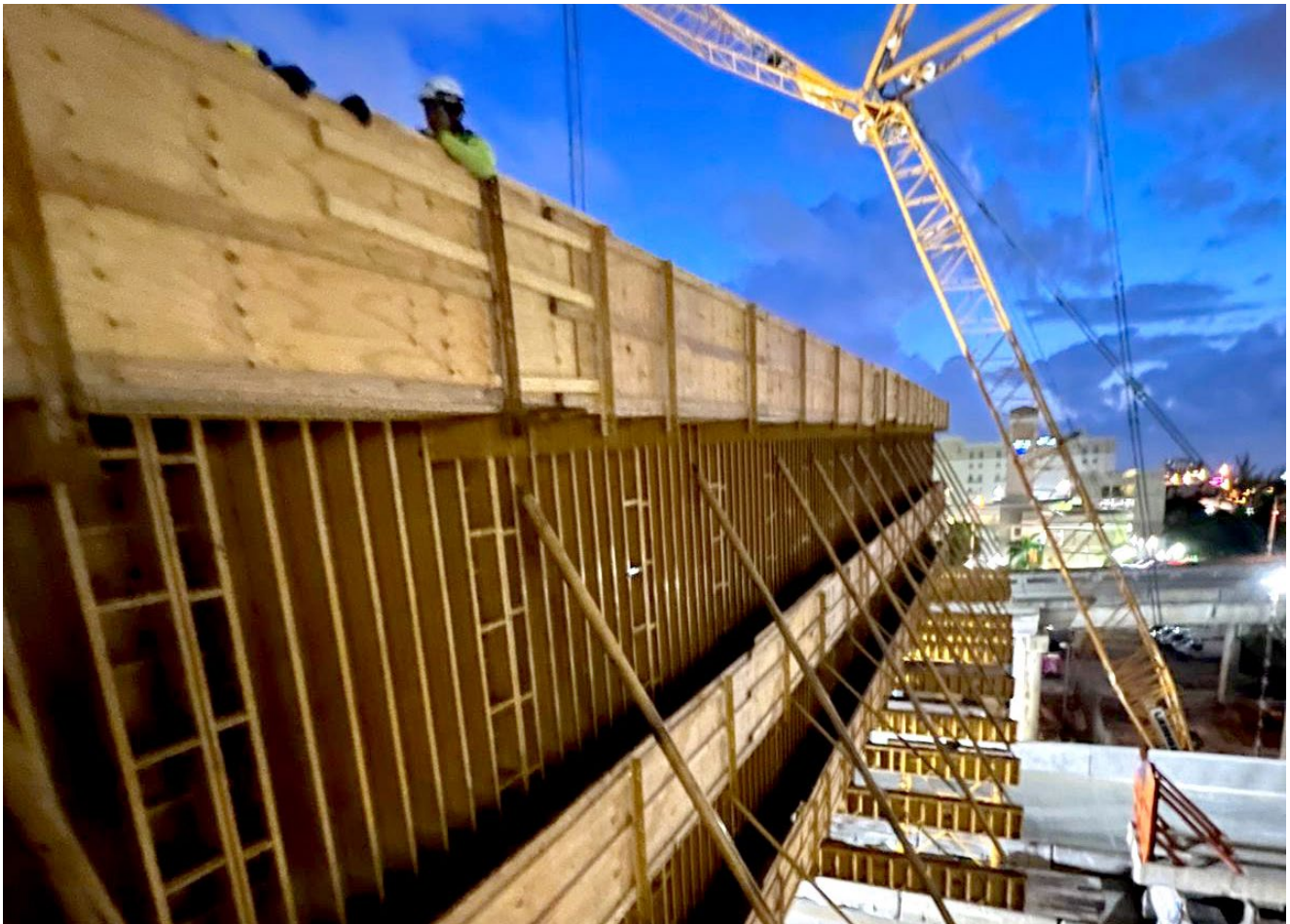
Continue reading on the next page...

NE 2 AVENUE CLOSURES

- **WEDNESDAY, JUNE 19 THROUGH FRIDAY, JUNE 21 AND SUNDAY, JUNE 23 THROUGH FRIDAY, JUNE 28** - NE 2 Avenue from NE 13 Street to I-395 will be closed between the hours of 10 p.m. and 5:30 a.m. Closure start times may vary depending on events.
 - Drivers on southbound NE 2 Avenue can:
 - Turn left on NE 14 Street, then turn right on Biscayne Boulevard
 - Turn right on NE 11 Street to connect with NE 2 Avenue
 - Drivers exiting I-395 can:
 - Continue east on NE 11 Terrace, then turn left on Biscayne Boulevard
 - Turn left on NE 14 Street to connect with NE 2 Avenue

TO VIEW A MAP OF THE DETOUR PLEASE [CLICK HERE](#).

SR 836 ONGOING CONSTRUCTION ACTIVITIES



Crews continue work on the bridge support structure over eastbound SR 836 just west of I-95

Continue reading on the next page...

- Installation of SR 836 bridge pier cap segments and beams for the double-decked roadway using the overhead lifter
- Construction of straddle bent over eastbound SR 836 just west of I-95
- Driving steel sheets into the ground in the SR 836 median between NW 12 Avenue and NW 7 Avenue
- Chipping concrete from auger cast piles for foundation construction between NW 12 Avenue and NW 7 Avenue
- Demolition of the median on eastbound SR 836 over NW 14 Street and NW 10 Avenue
- Foundation construction on the SR 836 median and adjacent roadways from NW 12 Avenue to I-95 for the new double-decked roadway
- Pier construction activities in the Miami River east bank between the shoreline and the fendering system
- Pier construction at the Richard E. Gerstein Justice Building parking area
- Ongoing casting of bridge caps
- Construction of double-decked piers at the core of the interchange

FULL CLOSURE OF WESTBOUND SR 836

- **THURSDAY, JUNE 20 AND SUNDAY, JUNE 23** - All westbound lanes on SR 836 will be closed from NW 12 Avenue to NW 17 Avenue between the hours of 10 p.m. and 5:30 a.m. Drivers can:
 - Exit at the NW 12 Avenue ramp, then turn left on NW 12 Avenue
 - Turn right on NW 7 Street
 - Turn right on NW 27 Avenue and continue north to connect with the westbound SR 836 ramp

TO VIEW A MAP OF THE DETOURS PLEASE [CLICK HERE](#).

SR 836 LANE CLOSURES

- **WEDNESDAY, JUNE 19 THROUGH FRIDAY, JUNE 21 AND SUNDAY, JUNE 23 THROUGH FRIDAY, JUNE 28** - Two eastbound lanes on SR 836 from NW 17 Avenue to I-95 will be closed as needed for bridge work between the hours of 9 p.m. and 5:30 a.m.
- **WEDNESDAY, JUNE 19 THROUGH FRIDAY, JUNE 21 AND SUNDAY, JUNE 23 THROUGH FRIDAY, JUNE 28** - Two westbound lanes on SR 836 from I-95 to NW 17 Avenue will be closed as needed for bridge work between the hours of 9 p.m. and 5:30 a.m.

Continue reading on the next page...

FULL CLOSURE OF NW 17 AVENUE

- **THURSDAY, JUNE 20 AND SUNDAY, JUNE 23 THROUGH FRIDAY, JUNE 28** - NW 17 Avenue will be closed between NW 7 Street and the north side of SR 836 between the hours of 10 p.m. and 5:30 a.m. Closure start times may vary depending on events.
 - Drivers on northbound NW 17 Avenue heading west on SR 836 can:
 - Turn west on NW 7 Street
 - Turn right on NW 27 Avenue to access the SR 836 west entrance ramp
 - Drivers on northbound NW 17 Avenue continuing north can:
 - Turn west on NW 7 Street, then turn right on NW 22 Avenue
 - Turn right on NW 20 Street to connect with NW 17 Avenue
 - Drivers on southbound NW 17 Avenue continuing south can:
 - Turn west on NW 20 Street, then turn left on NW 22 Avenue
 - Turn left on NW 7 Street to connect with NW 17 Avenue

TO VIEW A MAP OF THE DETOUR PLEASE [CLICK HERE](#)

CLOSURE OF NW NORTH RIVER DRIVE/NW 11 STREET

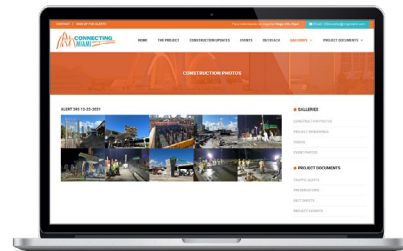
- **WEDNESDAY, JUNE 19 THROUGH FRIDAY, JUNE 21 AND SUNDAY, JUNE 23 THROUGH FRIDAY, JUNE 28** - All travel lanes on NW North River Drive/NW 11 Street will be closed between the hours of 9 p.m. and 5:30 a.m. Drivers can use the detour route shown [HERE](#). One lane will be closed between the hours of 9 a.m. and 4 p.m. as needed during the weekdays.

ABOUT THE PROJECT

The I-395/SR 836/I-95 Design-Build Project will add capacity, enhance the flow of traffic and safety and improve access along I-395, SR 836 and I-95.



To view a video of the project,
please visit:
i395-miami.com/project-video



To view updated project photos,
please visit:
i395-miami.com/construction-photos

Continue reading on the next page...

Please note that this schedule may change due to bad weather or other unforeseen conditions.

The work is part of the I-395/SR 836/I-95 Design-Build Project that will reconstruct the I-395 corridor from the SR 836/I-395/I-95 (Midtown) Interchange to the MacArthur Causeway Bridge, including the construction of a Signature Bridge over NE 2 Avenue and Biscayne Boulevard; double-deck SR 836 from west of NW 17 Avenue to the Midtown Interchange and the replacement of the concrete pavement on I-95 from NW 8 Street to NW 29 Street.

For additional information on the project please contact Oscar Gonzalez at 786-280-0983 or via email at I-395 Project Oscar.Gonzalez2@dot.state.fl.us. Additional project information can be found on the project website, www.I-395miami.com.

For information on scheduled lane closures on FDOT Construction Projects that affect traffic to/from and in Miami Beach, please [click here](#).