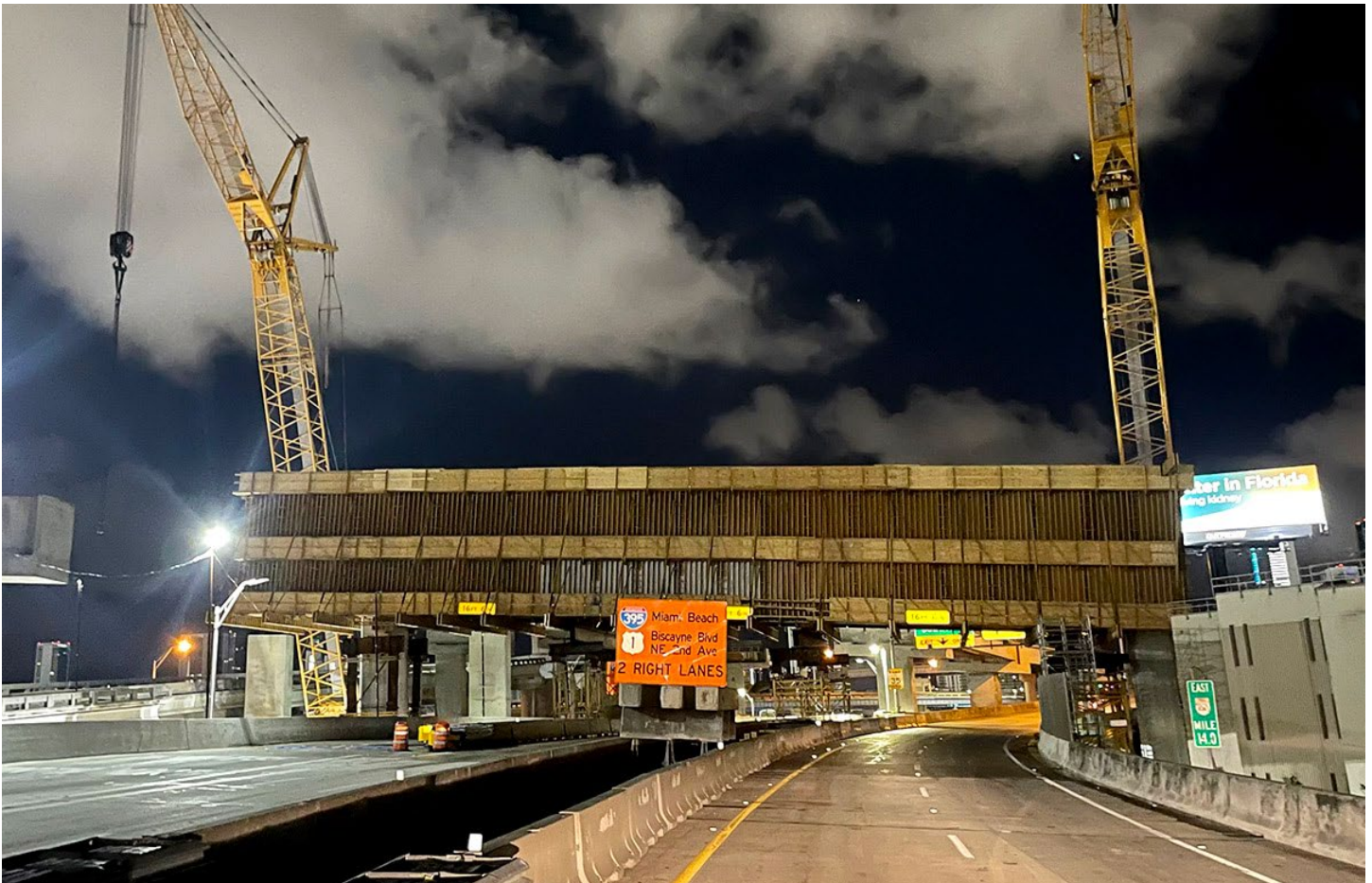


I-395/SR 836/I-95 DESIGN-BUILD PROJECT

Financial Project Numbers: 251688-1-52-01, 423126-1-52-01, 423126-2-52-01, 429300-2-52-01

06-06-2024

ONGOING COMPLETE CLOSURES OF EASTBOUND SR 836 AT NW 17 AVENUE



Complete closures of eastbound State Road (SR) 836 continue from NW 17 Avenue to I-95 to safely construct a bridge support structure over eastbound SR 836 just west of I-95. The contractor has completed the installation of the exterior formwork and is now working on preparing the structure for the installation of the reinforcing steel. Upcoming closures are noted below:

Continue reading on the next page...

- Thursday, June 6 between 10 p.m. and 5:30 a.m.
- Friday, June 7 from 11:30 p.m. until 7:30 a.m. on Saturday, June 8
- Monday, June 10 through Wednesday, June 12, nightly between 10 p.m. and 5:30 a.m.
- Friday, June 14 from 11 p.m. until 7 a.m. on Saturday, June 15

The detours noted below and shown [HERE](#) will be in place to guide drivers around the work area.

Drivers on eastbound SR 836 will:

- Exit at NW 17 Avenue, then continue south across NW 7 Street
- Turn left at SW 1 Street and continue east
- Turn right at South Miami Avenue
- Turn right to access the ramp to I-95 **north** or **south**
- Drivers going to **Biscayne Boulevard and the MacArthur Causeway** can continue east on SW 1 Street and turn left on Biscayne Boulevard to connect with the MacArthur Causeway entrance ramp at NE 11 Terrace

Drivers on NW 12 Avenue wanting to access eastbound SR 836, I-95, Biscayne Boulevard, and the MacArthur Causeway can continue south on NW 12 Avenue, turn left at SW 1 Street, and follow the detours above.

NOTICE TO MARINERS: FDOT is authorized to temporarily deviate from drawbridge operation regulation 33 CFR 117.305(b) that governs the SW 1 Street Bridge, mile 0.9, and the West Flagler Street Bridge, mile 1.0, across the Miami River. Under this temporary deviation, the SW 1 Street and the West Flagler Street Bridges will open on the hour and half-hour between the hours of 6 a.m. and 7:30 a.m. on Saturday, June 8.

Updates on additional closures will be provided weekly until the structure has been completed. Please note that this schedule may change due to bad weather or other unforeseen conditions.

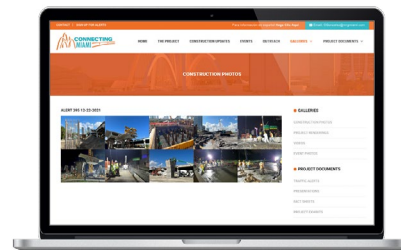
ABOUT THE PROJECT

The I-395/SR 836/I-95 Design-Build Project will add capacity, enhance the flow of traffic and safety and improve access along I-395, SR 836 and I-95.



**To view a video of the project,
please visit:**

i395-miami.com/project-video



**To view updated project photos,
please visit:**

i395-miami.com/construction-photos

Continue reading on the next page...

Please note that this schedule may change due to bad weather or other unforeseen conditions.

The work is part of the I-395/SR 836/I-95 Design-Build Project that will reconstruct the I-395 corridor from the SR 836/I-395/I-95 (Midtown) Interchange to the MacArthur Causeway Bridge, including the construction of a Signature Bridge over NE 2 Avenue and Biscayne Boulevard; double-deck SR 836 from west of NW 17 Avenue to the Midtown Interchange and the replacement of the concrete pavement on I-95 from NW 8 Street to NW 29 Street.

For additional information on the project please contact Oscar Gonzalez at 786-280-0983 or via email at Oscar.Gonzalez2@dot.state.fl.us. Additional project information can be found on the project website, www.I-395miami.com.

For information on scheduled lane closures on FDOT Construction Projects that affect traffic to/from and in Miami Beach, please [click here](#).