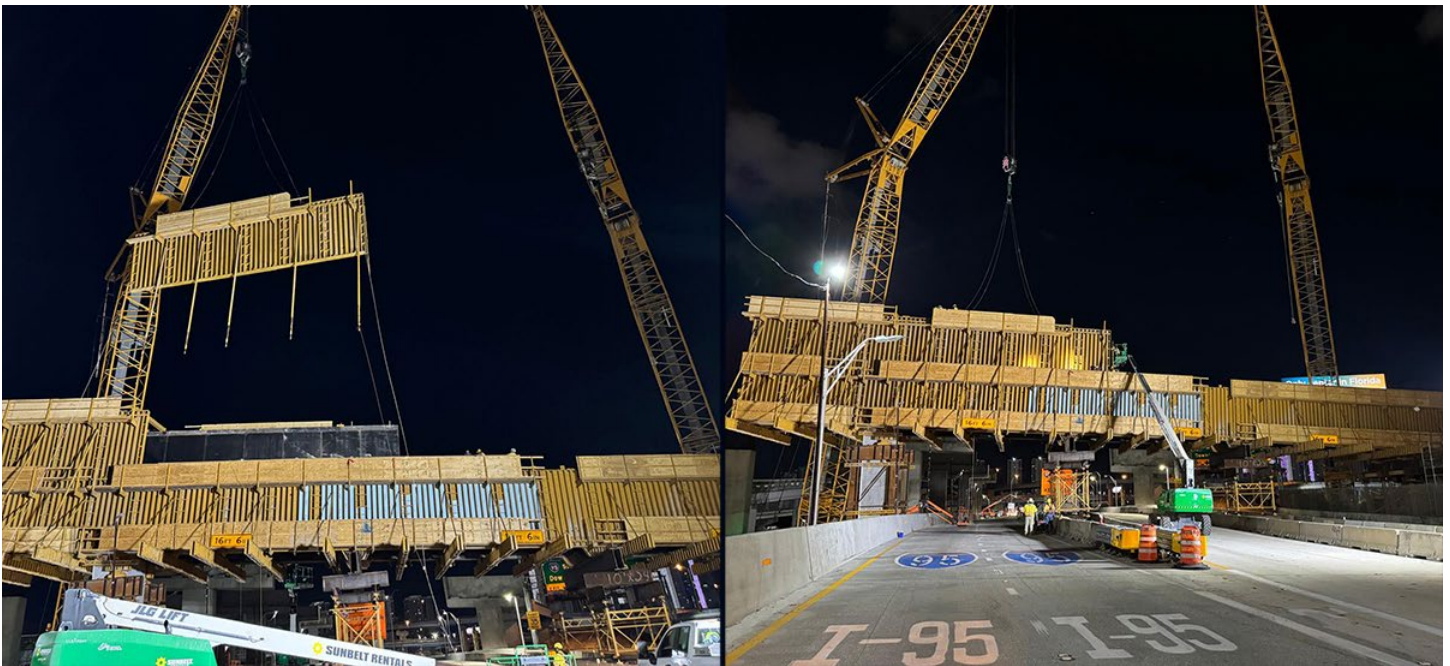


I-395/SR 836/I-95 DESIGN-BUILD PROJECT

Financial Project Numbers: 251688-1-52-01, 423126-1-52-01, 423126-2-52-01, 429300-2-52-01

05-24-2024

ONGOING COMPLETE CLOSURES OF EASTBOUND SR 836 AT NW 17 AVENUE



Complete closures of eastbound State Road (SR) 836 will continue to be implemented from NW 17 Avenue to I-95, as noted below, to safely construct a bridge support structure that will span the entire width of eastbound SR 836 just west of I-95.

- Tuesday, May 28, through Thursday, May 30, nightly between 10 p.m. and 5:30 a.m.
- Friday, May 31 from 11:30 p.m. until 7:30 a.m. on Saturday, June 1

The detours noted below and shown [HERE](#) will be in place to guide drivers around the work area. Drivers on eastbound SR 836 will:

- Exit at NW 17 Avenue, then continue south across NW 7 Street
- Turn left at SW 1 Street and continue east

Continue reading on the next page...

- Turn right at South Miami Avenue
- Turn right to access the ramp to I-95 north or south
- Drivers going to Biscayne Boulevard and the MacArthur Causeway can continue east on SW 1 Street and turn left on Biscayne Boulevard to connect with the MacArthur Causeway entrance ramp at NE 11 Terrace

Drivers on NW 12 Avenue wanting to access eastbound SR 836, I-95, Biscayne Boulevard, and the MacArthur Causeway can continue south on NW 12 Avenue, turn left at SW 1 Street, and follow the detours above.

Updates on additional closures will be provided weekly until the structure has been completed. Drivers can sign up for email updates by visiting the project website at www.I-395miami.com.

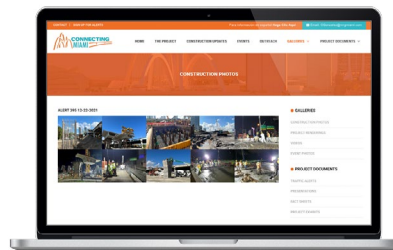
Please note that this schedule may change due to bad weather or other unforeseen conditions.

ABOUT THE PROJECT

The I-395/SR 836/I-95 Design-Build Project will add capacity, enhance the flow of traffic and safety and improve access along I-395, SR 836 and I-95.



**To view a video of the project,
please visit:**
i395-miami.com/project-video



**To view updated project photos,
please visit:**
i395-miami.com/construction-photos

Continue reading on the next page...

Please note that this schedule may change due to bad weather or other unforeseen conditions.

The work is part of the I-395/SR 836/I-95 Design-Build Project that will reconstruct the I-395 corridor from the SR 836/I-395/I-95 (Midtown) Interchange to the MacArthur Causeway Bridge, including the construction of a Signature Bridge over NE 2 Avenue and Biscayne Boulevard; double-deck SR 836 from west of NW 17 Avenue to the Midtown Interchange and the replacement of the concrete pavement on I-95 from NW 8 Street to NW 29 Street.

For additional information on the project please contact Oscar Gonzalez at 786-280-0983 or via email at Oscar.Gonzalez2@dot.state.fl.us. Additional project information can be found on the project website, www.I-395miami.com.

For information on scheduled lane closures on FDOT Construction Projects that affect traffic to/from and in Miami Beach, please [click here](#).