



# I-395/SR 836/I-95 DESIGN-BUILD PROJECT

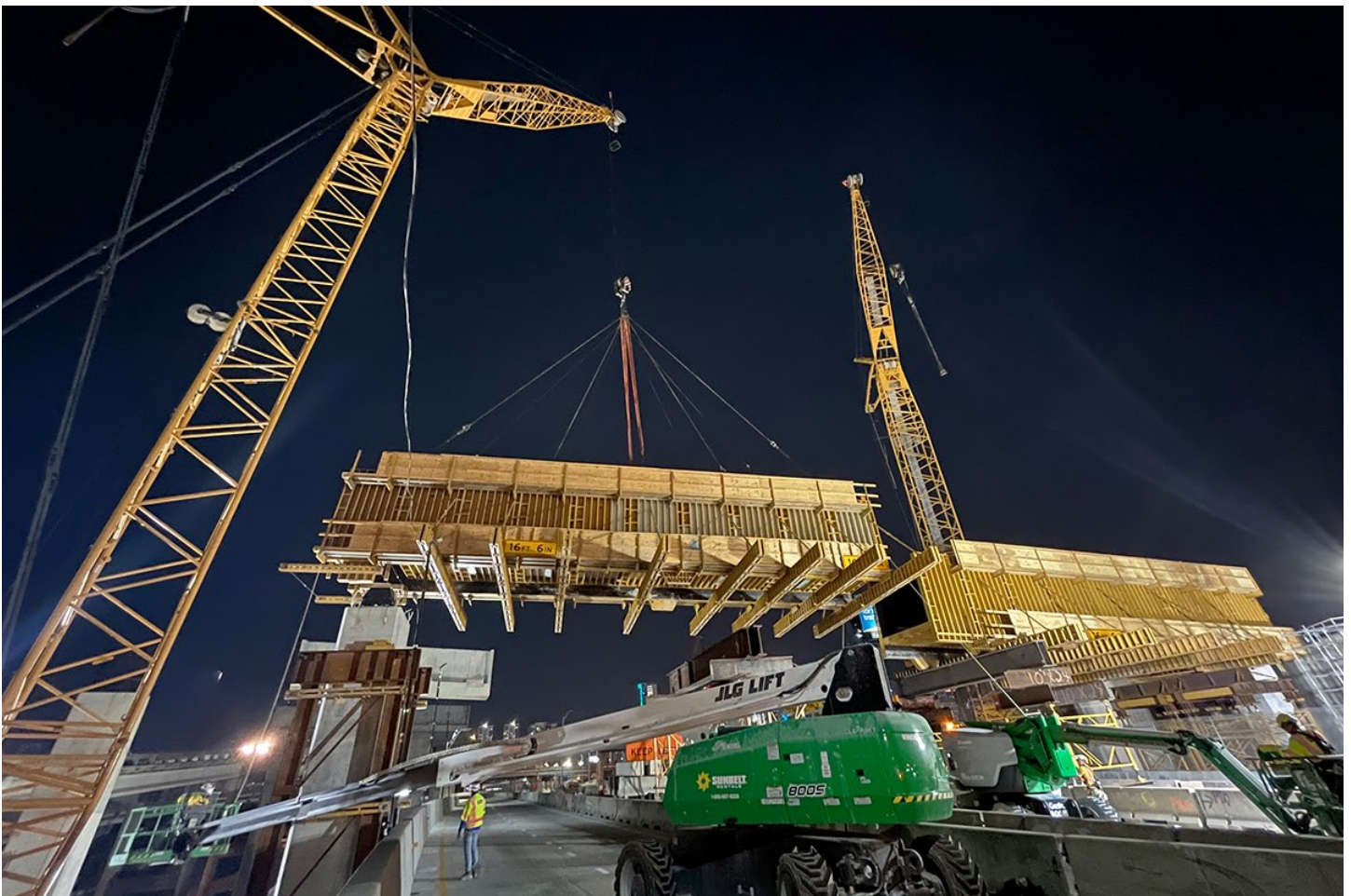
Financial Project Numbers: 251688-1-52-01, 423126-1-52-01, 423126-2-52-01, 429300-2-52-01

05-22-2024

## WEEKLY PROJECT UPDATE

**NOTE: LANE CLOSURES WILL BE SUSPENDED FROM FRIDAY, MAY 24 UNTIL TUESDAY MORNING, MAY 28 FOR THE MEMORIAL DAY HOLIDAY**

### ONGOING COMPLETE CLOSURES OF EASTBOUND STATE ROAD (SR) 836 AT NW 17 AVENUE



*Continue reading on the next page...*

**WEDNESDAY, MAY 22, THURSDAY, MAY 23 AND TUESDAY, MAY 28 THROUGH THURSDAY, MAY 30** - All eastbound SR 836 lanes will be closed from NW 17 Avenue to I-95 to safely construct a bridge support structure that will span the entire width of eastbound SR 836 just west of I-95.

Drivers on eastbound SR 836 will:

- Exit at NW 17 Avenue, then continue south across NW 7 Street
- Turn left at SW 1 Street and continue east
- Turn right at South Miami Avenue
- Turn right to access the ramp to I-95 north or south
- Drivers going to Biscayne Boulevard and the MacArthur Causeway can continue east on SW 1 Street and turn left on Biscayne Boulevard to connect with the MacArthur Causeway entrance ramp at NE 11 Terrace

Drivers on NW 12 Avenue wanting to access eastbound SR 836, I-95, Biscayne Boulevard, and the MacArthur Causeway can continue south on NW 12 Avenue, turn left at SW 1 Street, and follow the detours above.

A map of the detour routes is available [HERE](#). Updates on additional closures will be provided weekly until the structure has been completed.

---

## I-95 ONGOING CONSTRUCTION ACTIVITIES

- Installation of Intelligent Transportation System devices
- Concrete pavement replacement on I-95 between NW 8 Street and NW 17 Street
- Driving concrete piles into the ground for foundation construction between I-395 and NW 8 Street
- Construction of a new bridge over NW 17 Street on the SR 836/I-395 ramps to northbound I-95
- Construction of new ramp superstructure over SB I-95 for the new WB I-395 ramp to SB I-95
- Installation of new guardrail
- Traffic railing retrofit on several bridges

## I-95 LANE CLOSURES

- **WEDNESDAY, MAY 22, THURSDAY, MAY 23 AND TUESDAY, MAY 28 THROUGH THURSDAY, MAY 30** - Up to four lanes on southbound I-95 from NW 29 Street to NW 8 Street will be closed as needed between the hours of 9 p.m. and 5:30 a.m. The closure on Friday will be implemented between the hours of 11 p.m. and 11 a.m.
- **WEDNESDAY, MAY 22, THURSDAY, MAY 23 AND TUESDAY, MAY 28 THROUGH THURSDAY, MAY 30** - Up to four lanes on northbound I-95 will be closed as needed from NW 8 Street to NW 29 Street between the hours of 9 p.m. and 5:30 a.m. The closure on Friday will be implemented between the hours of 11 p.m. and 11 a.m.

*Continue reading on the next page...*

## SOUTHBOUND I-95 RAMP TO EASTBOUND I-395 DETOUR

- **WEDNESDAY, MAY 22, THURSDAY, MAY 23 AND TUESDAY, MAY 28 THROUGH THURSDAY, MAY 30** - The southbound I-95 ramp to eastbound I-395 will be closed as needed between the hours of 1 a.m. and 4 a.m. Drivers can:
  - Continue south on I-95, then exit at the SW 7 Street/Brickell Avenue (Exit 1B) ramp
  - Continue to SW 8 Street, then turn left to access the northbound I-95 ramp
  - Continue north on I-95 and access the ramp to eastbound I-395

## SOUTHBOUND I-95 RAMP TO NW 8 STREET DETOUR

- **WEDNESDAY, MAY 22, THURSDAY, MAY 23 AND TUESDAY, MAY 28 THROUGH THURSDAY, MAY 30** - The southbound I-95 ramp to NW 8 Street will be closed as needed between the hours of 9 p.m. and 5:30 a.m. Drivers can:
  - Continue south on I-95, then exit at the SW 7 Street/Brickell Avenue (Exit 1B) ramp
  - Continue to SW 8 Street, then turn left to access the northbound I-95 ramp
  - Continue north on I-95 and exit at the NW 2 Street/Arena (Exit 2B) ramp
  - Continue north on NW 3 Avenue to connect with NW 8 Street

TO VIEW A MAP OF THE DETOUR, PLEASE [CLICK HERE](#).

---

## I-395 ONGOING CONSTRUCTION ACTIVITIES

- Construction of signature bridge arch foundations east of Biscayne Boulevard
- Driving steel sheets into the ground adjacent to the Biscayne Boulevard Ramp to eastbound MacArthur Causeway
- Nighttime Auger Cast Pile installation for support tower foundations from east of Biscayne Boulevard to NE 1 Avenue between I-395 and NE 13 Street including in the median area of Biscayne Boulevard
- Ongoing work at the six signature bridge arches including placement of precast arch segments
- Preparation for the next concrete pour at the signature bridge center pier structure foundation located between Biscayne Boulevard and NE 2 Avenue just north of I-395
- Nighttime roadway operations on I-395 from MacArthur Causeway to I-95
- Nighttime erection of precast arch segments east of Biscayne Boulevard
- Daytime and nighttime demolition of I-395 bridges from approximately NE 1 Avenue to west of NW 3 Avenue
- Construction of support structures for construction of the signature bridge deck

*Continue reading on the next page...*

## I-395 MAINLINE LANE CLOSURES

- **WEDNESDAY, MAY 22, THURSDAY, MAY 23 AND TUESDAY, MAY 28 THROUGH FRIDAY, MAY 31** - One lane on mainline eastbound I-395 will be closed as needed from I-95 to Biscayne Boulevard between the hours of 10 p.m. and 5:30 a.m.
- **WEDNESDAY, MAY 22, THURSDAY, MAY 23 AND TUESDAY, MAY 28 THROUGH FRIDAY, MAY 31** - Up to two lanes on mainline westbound I-395 will be closed as needed from Biscayne Boulevard to I-95 between the hours of 10 p.m. and 5:30 a.m.

## LANE CLOSURES ON BISCAYNE BOULEVARD

- **WEDNESDAY, MAY 22, THURSDAY, MAY 23 AND TUESDAY, MAY 28 THROUGH THURSDAY, MAY 30** - Up to two lanes on northbound Biscayne Boulevard will be closed from NE 11 Street to NE 13 Street between the hours of 8 p.m. and 5:30 a.m. Closure start times may vary depending on events.

## FULL CLOSURE OF BISCAYNE BOULEVARD

- **WEDNESDAY, MAY 22 AND THURSDAY, MAY 23** - All northbound travel lanes on Biscayne Boulevard will be closed from NE 11 Street to NE 13 Street between the hours of 9 p.m. and 5:30 a.m. Closure start times may vary depending on events. Drivers can:
  - Turn left on NE 11 Street, then turn right on NE 1 Avenue
  - Turn right on NE 14 Street to connect with Biscayne Boulevard

TO VIEW A MAP OF THE DETOURS PLEASE [CLICK HERE](#).

## DAYTIME FULL CLOSURES OF NW 14 STREET FOR BRIDGE DEMOLITION

- Daily closures of NW 14 Street from NW 3 Avenue to NW 1 Place between the hours 8 a.m. to 4 p.m. continue in order to safely remove sections of bridges over the roadway. The closures will be implemented Mondays through Saturdays until further notice. NW 2 Avenue will also be closed between NW 13 Street and NW 14 Street. Nearby residents and businesses should anticipate elevated noise levels during the demolition activities. The contractor will implement measures to minimize dust impacts. The operations will involve large machinery and walking through the work zone is strictly prohibited. Drivers and pedestrians can use the detours shown [HERE](#).
  - Drivers on eastbound NW 14 Street can:
    - Turn right on NW 3 Avenue, then turn left on NW 13 Street
    - Turn left on NW 1 Place to connect with NW 14 Street
  - Drivers on westbound NW 14 Street can:
    - Turn right on NW 1 Court, then turn left on NW 15 Street
    - Turn right on NW 2 Avenue, then turn left on NW 16 Street
    - Turn left on NW 3 Avenue to connect with NW 14 Street

*Continue reading on the next page...*

## NE 2 AVENUE CLOSURES

- **WEDNESDAY, MAY 22, THURSDAY, MAY 23 AND TUESDAY, MAY 28 THROUGH FRIDAY, MAY 31** - NE 2 Avenue from NE 13 Street to I-395 will be closed between the hours of 10 p.m. and 5:30 a.m. The closure on Tuesday, May 28 will begin at 9 p.m. Closure start times may vary depending on events.
  - Drivers on southbound NE 2 Avenue can:
    - Turn left on NE 14 Street, then turn right on Biscayne Boulevard
    - Turn right on NE 11 Street to connect with NE 2 Avenue
  - Drivers exiting I-395 can:
    - Continue east on NE 11 Terrace, then turn left on Biscayne Boulevard
    - Turn left on NE 14 Street to connect with NE 2 Avenue

TO VIEW A MAP OF THE DETOUR PLEASE [CLICK HERE](#).

---

## SR 836 ONGOING CONSTRUCTION ACTIVITIES

- Installation of SR 836 bridge pier cap segments and beams for the double-decked roadway using the overhead lifter
- Construction of straddle bent over eastbound SR 836 just west of I-95
- Driving steel sheets into the ground in the SR 836 median between NW 12 Avenue and NW 7 Avenue
- Chipping concrete from auger cast piles for foundation construction between NW 12 Avenue and NW 7 Avenue
- Demolition of the median on eastbound SR 836 over NW 14 Street and NW 10 Avenue
- Foundation construction on the SR 836 median and adjacent roadways from NW 12 Avenue to I-95 for the new double-decked roadway
- Pier construction activities in the Miami River east bank between the shoreline and the fendering system
- Pier construction at the Richard E. Gerstein Justice Building parking area
- Ongoing casting of bridge caps
- Construction of double-decked piers at the core of the interchange

## FULL CLOSURE OF WESTBOUND SR 836

- **TUESDAY, MAY 28** - All westbound lanes on SR 836 will be closed from NW 12 Avenue to NW 17 Avenue between the hours of 11 p.m. and 5:30 a.m. Drivers can:
  - Exit at the NW 12 Avenue ramp, then turn left on NW 12 Avenue
  - Turn right on NW 7 Street
  - Turn right on NW 27 Avenue and continue north to connect with the westbound SR 836 ramp

TO VIEW A MAP OF THE DETOURS PLEASE [CLICK HERE](#).

*Continue reading on the next page...*



## SR 836 LANE CLOSURES

- **WEDNESDAY, MAY 22, THURSDAY, MAY 23 AND TUESDAY, MAY 28 THROUGH FRIDAY, MAY 31** - Two eastbound lanes on SR 836 from NW 17 Avenue to I-95 will be closed as needed for bridge work between the hours of 9 p.m. and 5:30 a.m.
- **WEDNESDAY, MAY 22, THURSDAY, MAY 23 AND TUESDAY, MAY 28 THROUGH FRIDAY, MAY 31** - Two westbound lanes on SR 836 from I-95 to NW 17 Avenue will be closed as needed for bridge work between the hours of 9 p.m. and 5:30 a.m.

## FULL CLOSURE OF NW 17 AVENUE

- **WEDNESDAY, MAY 22, THURSDAY, MAY 23 AND TUESDAY, MAY 28 THROUGH FRIDAY, MAY 31** - NW 17 Avenue will be closed between NW 7 Street and the north side of SR 836 between the hours of 10 p.m. and 5:30 a.m. Closure start times may vary depending on events.
  - Drivers on northbound NW 17 Avenue heading west on SR 836 can:
    - Turn west on NW 7 Street
    - Turn right on NW 27 Avenue to access the SR 836 west entrance ramp
  - Drivers on northbound NW 17 Avenue continuing north can:
    - Turn west on NW 7 Street, then turn right on NW 22 Avenue
    - Turn right on NW 20 Street to connect with NW 17 Avenue
  - Drivers on southbound NW 17 Avenue continuing south can:
    - Turn west on NW 20 Street, then turn left on NW 22 Avenue
    - Turn left on NW 7 Street to connect with NW 17 Avenue

TO VIEW A MAP OF THE DETOUR PLEASE [CLICK HERE](#)

## NW 14 STREET AND SIDEWALK CLOSURE

- **WEDNESDAY, MAY 22** - NW 14 Street will be closed from NW 7 Avenue to NW 10 Avenue between the hours of 9 p.m. and 5:30 a.m. The south side of the sidewalk will be closed to safely perform construction activities as noted [HERE](#).
  - Drivers on westbound NW 14 Street can:
    - Turn right on NW 7 Avenue, then turn left on NW 17 Street
    - Turn left on NW 9 Avenue and follow NW 10 Avenue to connect with NW 14 Street
  - Drivers on eastbound NW 14 Street can:
    - Turn left on NW 10 Avenue and follow NW 9 Avenue, then turn right on NW 17 Street
    - Turn right on NW 7 Avenue to connect with NW 14 Street

TO VIEW A MAP OF THE DETOUR PLEASE [CLICK HERE](#).

*Continue reading on the next page...*

## CLOSURE OF NW NORTH RIVER DRIVE/NW 11 STREET

- **TUESDAY, MAY 28 THROUGH FRIDAY, MAY 31** - All eastbound travel lanes on NW North River Drive/NW 11 Street will be closed from NW 12 Street to NW 13 Avenue between the hours of 8 a.m. and 4 P.M.

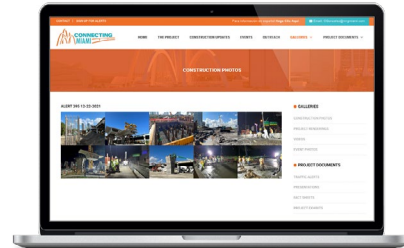
---

### ABOUT THE PROJECT

The I-395/SR 836/I-95 Design-Build Project will add capacity, enhance the flow of traffic and safety and improve access along I-395, SR 836 and I-95.



To view a video of the project,  
please visit:  
[i395-miami.com/project-video](http://i395-miami.com/project-video)



To view updated project photos,  
please visit:  
[i395-miami.com/construction-photos](http://i395-miami.com/construction-photos)

---

**Please note that this schedule may change due to bad weather or other unforeseen conditions.**

The work is part of the I-395/SR 836/I-95 Design-Build Project that will reconstruct the I-395 corridor from the SR 836/I-395/I-95 (Midtown) Interchange to the MacArthur Causeway Bridge, including the construction of a Signature Bridge over NE 2 Avenue and Biscayne Boulevard; double-deck SR 836 from west of NW 17 Avenue to the Midtown Interchange and the replacement of the concrete pavement on I-95 from NW 8 Street to NW 29 Street.

For additional information on the project please contact Oscar Gonzalez at 786-280-0983 or via email at I-395 Project [Oscar.Gonzalez2@dot.state.fl.us](mailto:Oscar.Gonzalez2@dot.state.fl.us). Additional project information can be found on the project website, [www.I-395miami.com](http://www.I-395miami.com).

---

For information on scheduled lane closures on FDOT Construction Projects that affect traffic to/from and in Miami Beach, please [click here](#).