

# I-395/SR 836/I-95 DESIGN-BUILD PROJECT

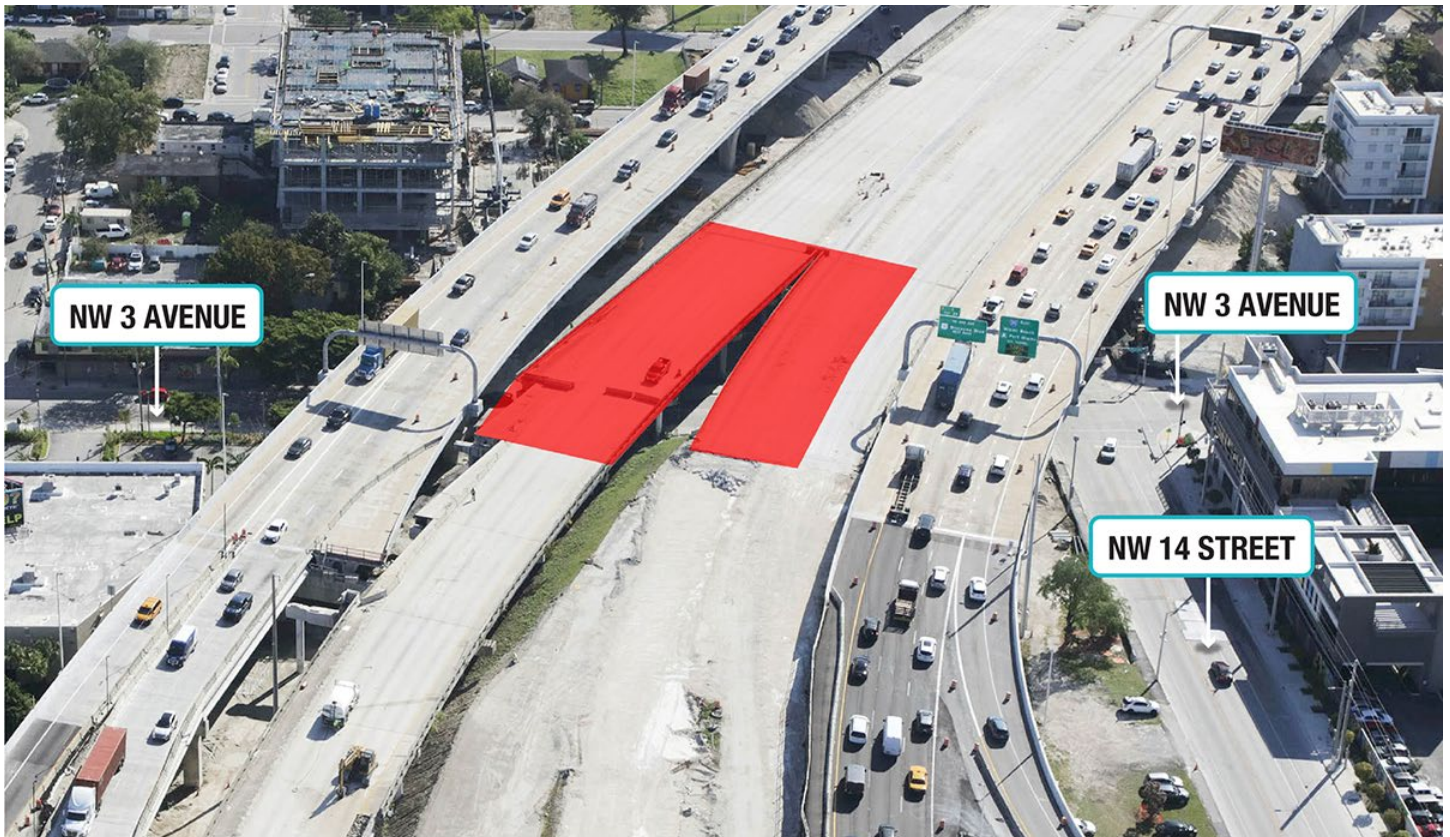
Financial Project Numbers: 251688-1-52-01, 423126-1-52-01, 423126-2-52-01, 429300-2-52-01

04-26-2024

## REMINDER: UPCOMING ROADWAY CLOSURES FOR BRIDGE DEMOLITION

The closures noted below will be implemented to safely remove bridge sections over the roadways. Nearby residents and businesses should anticipate elevated noise levels during the demolition activities. The contractor will implement measures to minimize dust impacts. The operations will involve large machinery and walking through the work zones is strictly prohibited. The work and closures are being implemented during the weekend and daytime hours to minimize noise impacts to nearby residents during the overnight hours.

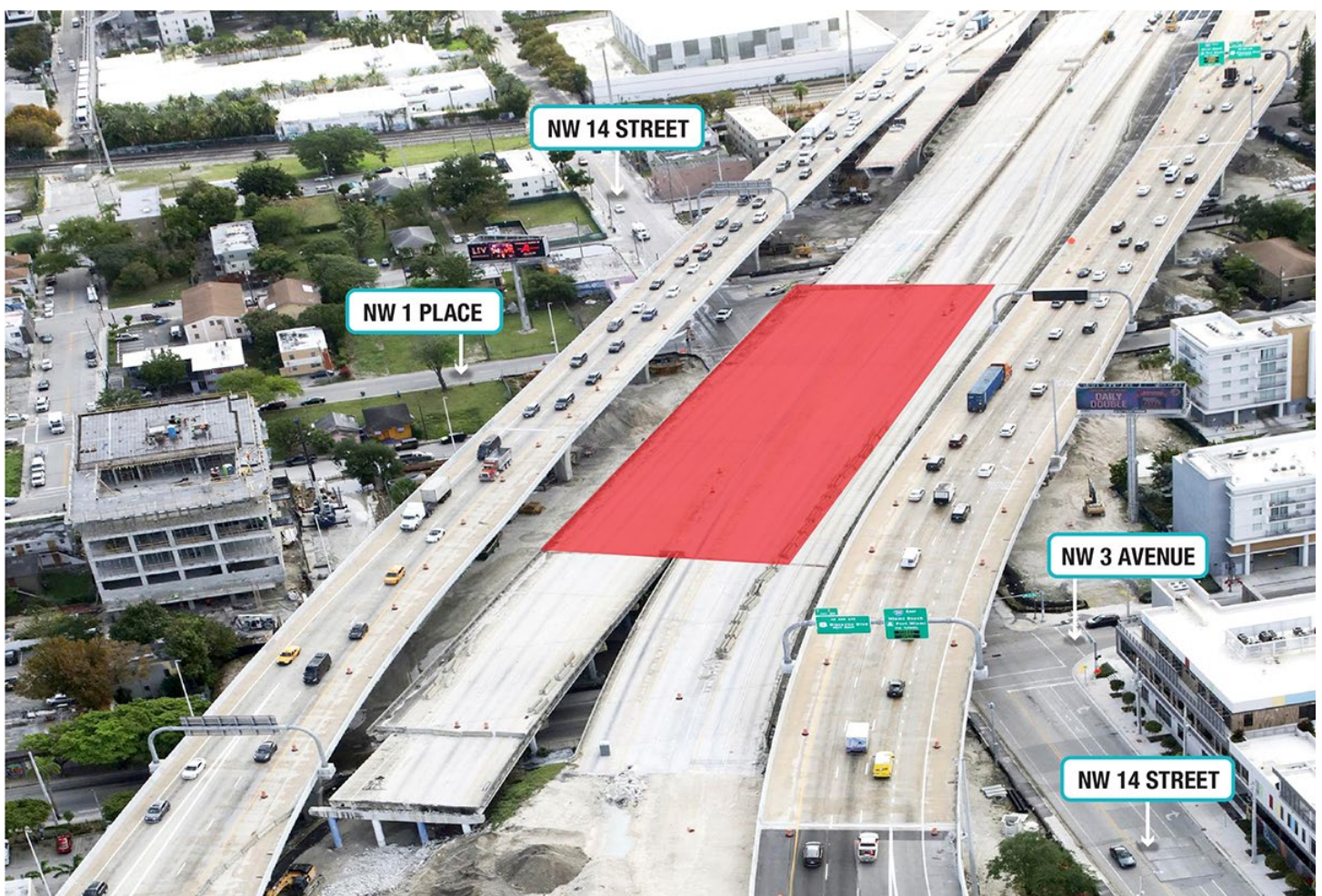
### WEEKEND CLOSURE OF NW 3 AVENUE FOR BRIDGE DEMOLITION



*Continue reading on the next page...*

- NW 3 Avenue will be closed from NW 14 Street to NW 15 Street starting at **10 p.m. on FRIDAY, APRIL 26** until **5:30 a.m. on MONDAY, APRIL 29**, to allow the contractor to safely remove the bridge structures over the roadway. Drivers and pedestrians can use the detours shown [HERE](#). Access to businesses will be maintained.
  - Drivers on northbound NW 3 Avenue can:
    - Turn right on NW 14 Street, then turn left on NW 1 Avenue
    - Turn left on NW 16 Street to connect with NW 3 Avenue
  - Drivers on southbound NW 3 Avenue can:
    - Turn left on NW 16 Street, then turn right on NW 2 Avenue
    - Turn left on NW 15 Street, then turn right on NW 1 Avenue
    - Turn right on NW 14 Street to connect with NW 3 Avenue

## DAYTIME FULL CLOSURE OF NW 14 STREET



- Starting on **MONDAY, APRIL 29**, NW 14 Street will be closed daily from NW 3 Avenue to NW 1 Place between the hours 8 a.m. to 4 p.m. to safely remove sections of bridges over the roadway. The closures will be implemented Mondays through Saturdays until further notice. Drivers and pedestrians can use the detours shown [HERE](#).

*Continue reading on the next page...*

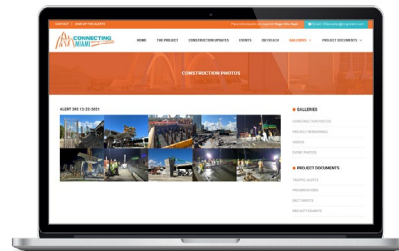
- Drivers on eastbound NW 14 Street can:
  - Turn right on NW 3 Avenue, then turn left on NW 13 Street
  - Turn left on NW 1 Place to connect with NW 14 Street
- Drivers on westbound NW 14 Street can:
  - Turn right on NW 1 Place, then turn left on NW 15 Street
  - Turn right on NW 2 Avenue, to continue onto NW 15 Street
  - Turn left on NW 3 Avenue to connect with NW 14 Street

## ABOUT THE PROJECT

The I-395/SR 836/I-95 Design-Build Project will add capacity, enhance the flow of traffic and safety and improve access along I-395, SR 836 and I-95.



**To view a video of the project,  
please visit:**  
[i395-miami.com/project-video](http://i395-miami.com/project-video)



**To view updated project photos,  
please visit:**  
[i395-miami.com/construction-photos](http://i395-miami.com/construction-photos)

**Please note that this schedule may change due to bad weather or other unforeseen conditions.**

The work is part of the I-395/SR 836/I-95 Design-Build Project that will reconstruct the I-395 corridor from the SR 836/I-395/I-95 (Midtown) Interchange to the MacArthur Causeway Bridge, including the construction of a Signature Bridge over NE 2 Avenue and Biscayne Boulevard; double-deck SR 836 from west of NW 17 Avenue to the Midtown Interchange and the replacement of the concrete pavement on I-95 from NW 8 Street to NW 29 Street.

For additional information on the project please contact Oscar Gonzalez at 786-280-0983 or via email at [Oscar.Gonzalez2@dot.state.fl.us](mailto:Oscar.Gonzalez2@dot.state.fl.us). Additional project information can be found on the project website, [www.i-395miami.com](http://www.i-395miami.com).

For information on scheduled lane closures on FDOT Construction Projects that affect traffic to/from and in Miami Beach, please [click here](#).