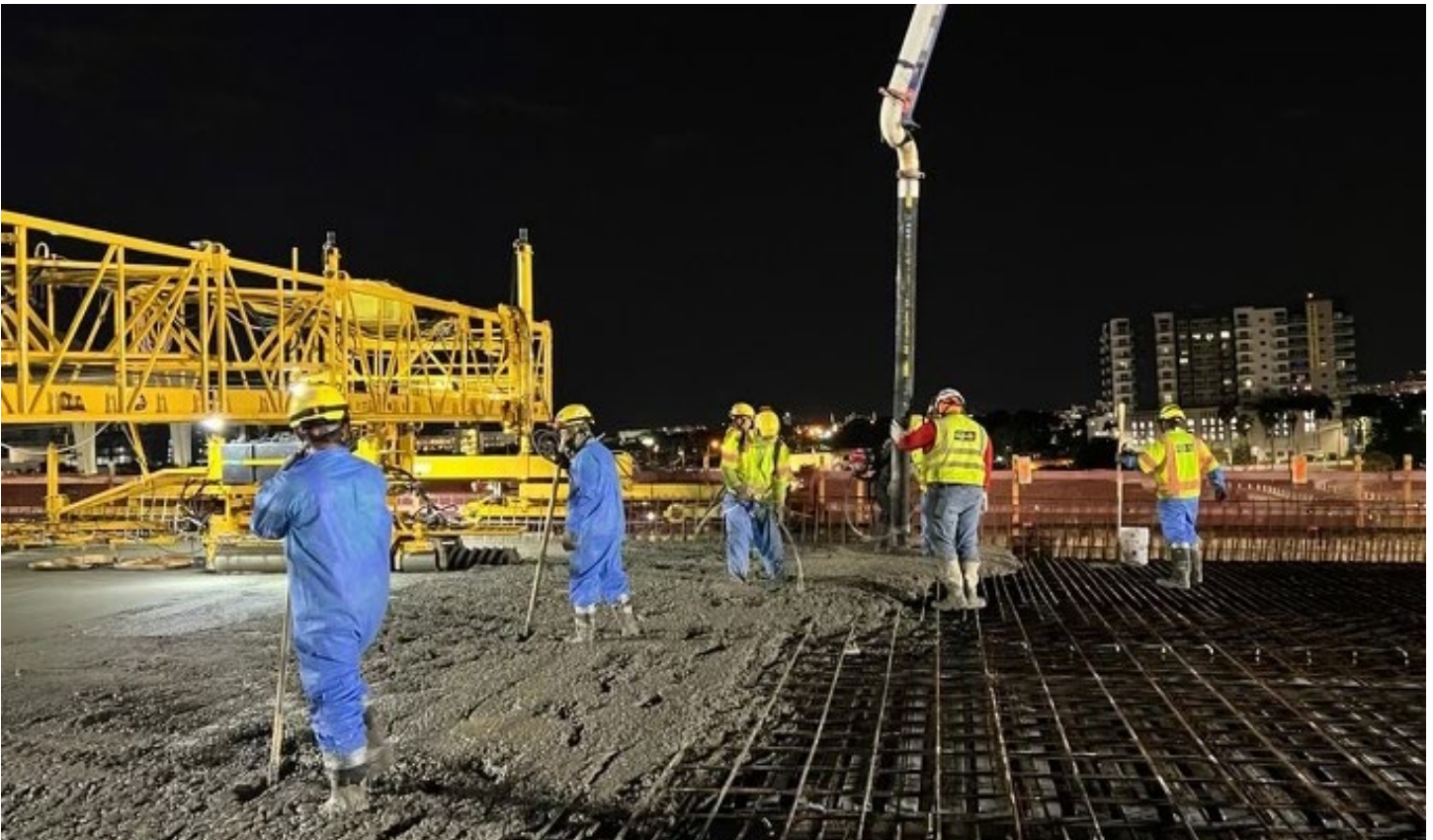


I-395/SR 836/I-95 DESIGN-BUILD PROJECT

Financial Project Numbers: 251688-1-52-01, 423126-1-52-01, 423126-2-52-01, 429300-2-52-01

04-08-2024



Concrete deck pour for the new SR 836 double-decked bridge just west on NW 17 Avenue

EASTBOUND SR 836 RAMP TO NORTHBOUND I-95 DETOUR

- **MONDAY, APRIL 8 THROUGH FRIDAY, APRIL 12** - The eastbound SR 836 ramp to northbound I-95 will be closed as needed between the hours of 9 p.m. and 5:30 a.m. Drivers can:
 - Access the southbound I-95/NW 8 Street ramp, continue south on I-95
 - Exit at SW 7 Street/Brickell Avenue (Exit 1B), then turn left at SW 8 Street
 - Enter the northbound I-95 ramp

TO VIEW A MAP OF THE DETOUR PLEASE [CLICK HERE](#).

Continue reading on the next page...

SOUTHBOUND I-95 RAMP TO NW 8 STREET DETOUR

- **MONDAY, APRIL 8 THROUGH FRIDAY, APRIL 12** - The southbound I-95 ramp to NW 8 Street will be closed as needed between the hours of 9 p.m. and 5:30 a.m. Drivers can:
 - Continue south on I-95, then exit at the SW 7 Street/Brickell Avenue (Exit 1B) ramp
 - Continue to SW 8 Street, then turn left to access the northbound I-95 ramp
 - Continue north on I-95 and exit at the NW 2 Street/Arena (Exit 2B) ramp
 - Continue north on NW 3 Avenue to connect with NW 8 Street

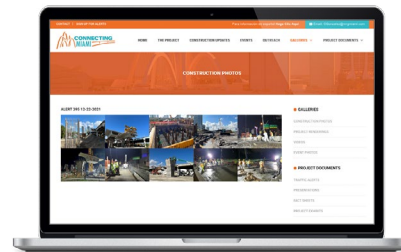
TO VIEW A MAP OF THE DETOUR, PLEASE [CLICK HERE](#).

ABOUT THE PROJECT

The I-395/SR 836/I-95 Design-Build Project will add capacity, enhance the flow of traffic and safety and improve access along I-395, SR 836 and I-95.



To view a video of the project,
please visit:
i395-miami.com/project-video



To view updated project photos,
please visit:
i395-miami.com/construction-photos

Please note that this schedule may change due to bad weather or other unforeseen conditions.

The work is part of the I-395/SR 836/I-95 Design-Build Project that will reconstruct the I-395 corridor from the SR 836/I-395/I-95 (Midtown) Interchange to the MacArthur Causeway Bridge, including the construction of a Signature Bridge over NE 2 Avenue and Biscayne Boulevard; double-deck SR 836 from west of NW 17 Avenue to the Midtown Interchange and the replacement of the concrete pavement on I-95 from NW 8 Street to NW 29 Street.

For additional information on the project please contact Oscar Gonzalez at 786-280-0983 or via email at Oscar.Gonzalez2@dot.state.fl.us. Additional project information can be found on the project website, www.i-395miami.com.

For information on scheduled lane closures on FDOT Construction Projects that affect traffic to/from and in Miami Beach, please [click here](#).