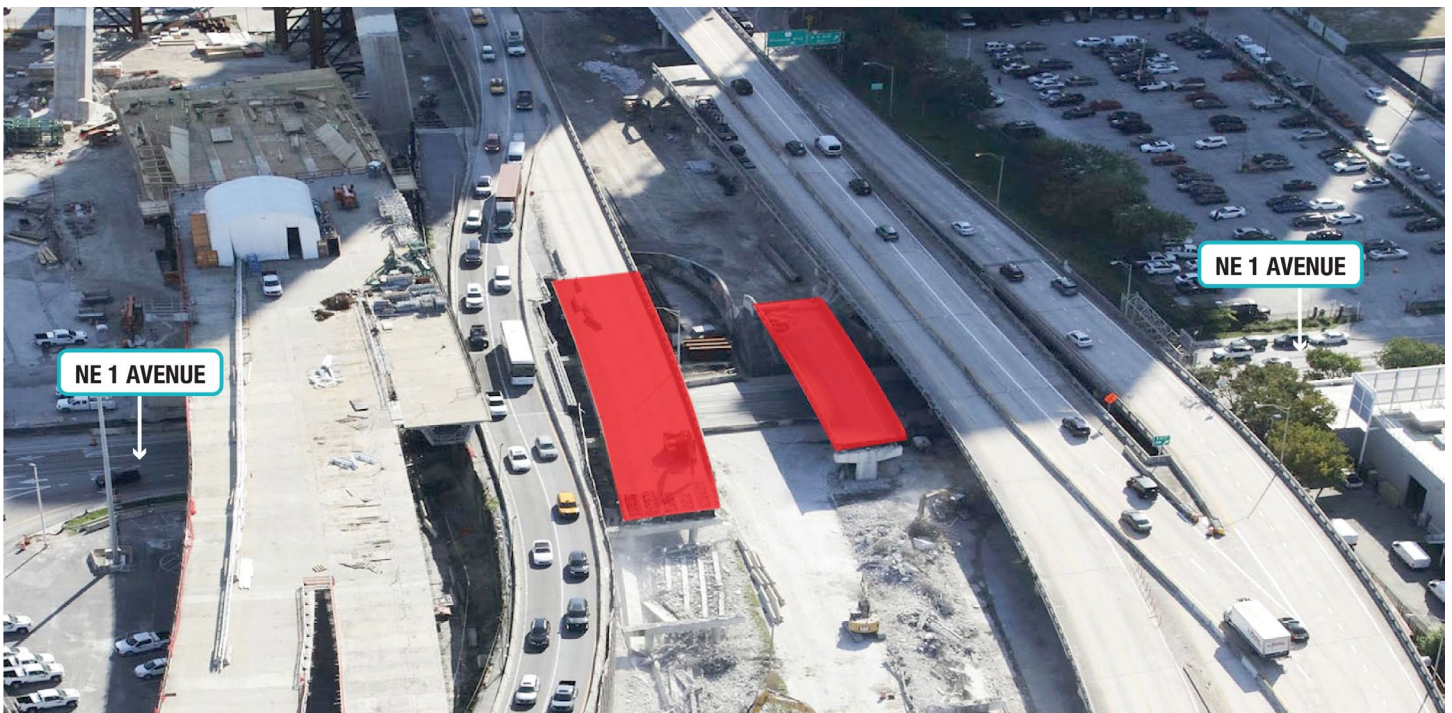


I-395/SR 836/I-95 DESIGN-BUILD PROJECT

Financial Project Numbers: 251688-1-52-01, 423126-1-52-01, 423126-2-52-01, 429300-2-52-01

03-14-2024

WEEKEND CLOSURE OF NE 1 AVENUE



- **SATURDAY, MARCH 16 THROUGH MONDAY, MARCH 18** - NE 1 Avenue will be closed from NE 11 Street to NE 13 Street starting at 5:30 a.m. on Saturday, March 16 until 5:30 a.m. on Monday, March 18, to allow the contractor to safely remove the bridge structures over the roadway. Nearby residents and businesses should anticipate elevated noise levels during the demolition activities. The contractor will implement measures to minimize dust impacts. The operations will involve large machinery and walking through work zone is strictly prohibited.
 - Drivers on NE 1 Avenue can :
 - Turn right on NE 10 Street, then turn left on Biscayne Boulevard
 - Turn left on NE 13 Street to connects with NE 1 Avenue or access the westbound I-395 ramp

TO VIEW A DETOUR MAP [CLICK HERE](#)

Continue reading on the next page...

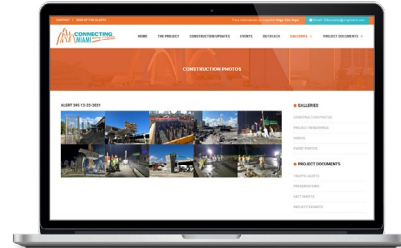
ABOUT THE PROJECT

The I-395/SR 836/I-95 Design-Build Project will add capacity, enhance the flow of traffic and safety and improve access along I-395, SR 836 and I-95.



To view a video of the project,
please visit:

i395-miami.com/project-video



To view updated project photos,
please visit:

i395-miami.com/construction-photos

Please note that this schedule may change due to bad weather or other unforeseen conditions.

The work is part of the I-395/SR 836/I-95 Design-Build Project that will reconstruct the I-395 corridor from the SR 836/I-395/I-95 (Midtown) Interchange to the MacArthur Causeway Bridge, including the construction of a Signature Bridge over NE 2 Avenue and Biscayne Boulevard; double-deck SR 836 from west of NW 17 Avenue to the Midtown Interchange and the replacement of the concrete pavement on I-95 from NW 8 Street to NW 29 Street.

For additional information on the project please contact Oscar Gonzalez at 786-280-0983 or via email at Oscar.Gonzalez2@dot.state.fl.us. Additional project information can be found on the project website, www.I-395miami.com.

For information on scheduled lane closures on FDOT Construction Projects that affect traffic to/from and in Miami Beach, please [click here](#).