

# I-395/SR 836/I-95 DESIGN-BUILD PROJECT

Financial Project Numbers: 251688-1-52-01, 423126-1-52-01, 423126-2-52-01, 429300-2-52-01

03-13-2024

## WEEKLY PROJECT UPDATE

### I-95 ONGOING CONSTRUCTION ACTIVITIES



Erection of beams over southbound I-95 for the new westbound I-395 to southbound I-95 ramp bridges

*Continue reading on the next page...*

- Installation of Intelligent Transportation System devices
- Concrete pavement replacement on I-95 between NW 8 Street and NW 17 Street
- Driving concrete piles into the ground for foundation construction between I-395 and NW 8 Street
- Construction of a new bridge over NW 17 Street on the SR 836/I-395 ramps to northbound I-95
- Construction of new ramp superstructure over SB I-95 for the new WB I-395 ramp to SB I-95
- Installation of new guardrail
- Traffic railing retrofit on several bridges

## FULL CLOSURE OF SOUTHBOUND I-95 AT SR 836

- **WEDNESDAY, MARCH 13 THROUGH FRIDAY, MARCH 15** - All southbound lanes on I-95 will be closed at SR 836 between the hours of 10 p.m. and 5:30 a.m. for overhead work. The closure on Friday, March 15, will be implemented between the hours of 11 p.m. and 8 a.m.
  - Non-Tolled detour route for southbound I-95:
    - Exit at the SR 836 West Ramp, then exit at NW 14 Street
    - Turn left at NW 12 Avenue, then turn left at NW 11 Street
    - Turn right at NW 8 Street Road, then turn left at NW 8 Street
    - Turn right at NW 3 Court to access the I-95 south ramp after NW 2 Street
  - Tolled detour route for southbound I-95:
    - Exit at the SR 836 West Ramp, then exit at NW 12 Avenue
    - Turn left at NW 12 Avenue to access the SR 836 east entrance ramp
    - Continue east on SR 836 to access the I-95 south ramp
- **NOTE: On WEDNESDAY, MARCH 13 AND THURSDAY, MARCH 14**, the southbound I-95 ramp to eastbound I-395 will also be closed between the hours of 11:45 p.m. to 5:30 a.m.
  - Non-Tolled detour route for eastbound I-395:
    - Exit at the SR 836 West Ramp, then exit at NW 14 Street
    - Turn left at NW 12 Avenue, then turn left at NW 11 Street
    - Turn right at NW 8 Street Road, then turn left at NW 8 Street
    - Continue east on NW 8 Street, then turn left at Biscayne Boulevard to access the A1A North/ Miami Beach ramp
  - Tolled detour route for eastbound I-395:
    - Exit at the SR 836 West Ramp, then exit at NW 12 Avenue
    - Turn left at NW 12 Avenue to access the SR 836 east entrance ramp
    - Continue east on SR 836 to access eastbound I-395

TO VIEW A MAP OF THE DETOUR PLEASE [CLICK HERE](#).

*Continue reading on the next page...*

## I-95 LANE CLOSURES

- **WEDNESDAY, MARCH 13 THROUGH FRIDAY, MARCH 15 AND SUNDAY, MARCH 17 THROUGH FRIDAY, MARCH 22** - Up to four lanes on southbound I-95 from NW 29 Street to NW 8 Street will be closed as needed between the hours of 9 p.m. and 5:30 a.m. The closure on Fridays will be implemented between the hours of 11 p.m. and 11 a.m.
- **WEDNESDAY, MARCH 13 THROUGH FRIDAY, MARCH 15 AND SUNDAY, MARCH 17 THROUGH FRIDAY, MARCH 22** - Up to four lanes on northbound I-95 will be closed as needed from NW 8 Street to NW 29 Street between the hours of 9 p.m. and 5:30 a.m. The closure on Fridays will be implemented between the hours of 11 p.m. and 11 a.m.

## SOUTHBOUND I-95 RAMP TO EASTBOUND I-395 DETOUR

- **WEDNESDAY, MARCH 13, THURSDAY, MARCH 14 AND SUNDAY, MARCH 17 THROUGH FRIDAY, MARCH 22** - The southbound I-95 ramp to eastbound I-395 will be closed between the hours of 10 p.m. and 5:30 a.m. Drivers can:
  - Non-Tolled detour route for ramp to eastbound I-395:
    - Exit at the SR 836 West Ramp, then exit at NW 14 Street
    - Turn left at NW 12 Avenue, then turn left at NW 11 Street
    - Turn right at NW 8 Street Road, then turn left at NW 8 Street
    - Continue east on NW 8 Street, then turn left at Biscayne Boulevard to access the A1A North/Miami Beach ramp
  - Tolled detour route for ramp to eastbound I-395:
    - Exit at the SR 836 West Ramp, then exit at NW 12 Avenue
    - Turn left at NW 12 Avenue to access the SR 836 east entrance ramp
    - Continue east on SR 836 to access eastbound I-395

TO VIEW A MAP OF THE DETOUR PLEASE [CLICK HERE](#).

## NORTHBOUND I-95 RAMP TO WESTBOUND SR 836 DETOUR

- **THURSDAY, MARCH 14 AND FRIDAY, MARCH 15** - The northbound I-95 ramp to westbound SR 836 will be closed between the hours of 10 p.m. and 5:30 a.m. for lighting maintenance.
  - Drivers can:
    - Enter the eastbound I-395 ramp
    - Exit at NE 2 Avenue/Biscayne Boulevard (Exit 2B), then turn right on NE 2 Avenue
    - Turn right on NE 11 Street
    - Turn right on NE 1 Avenue to access westbound I-395 to continue onto westbound SR 836

TO VIEW A MAP OF THE DETOUR PLEASE [CLICK HERE](#).

*Continue reading on the next page...*

## NORTHBOUND I-95 RAMP TO EASTBOUND I-395 DETOUR

- **SUNDAY, MARCH 17 THROUGH FRIDAY, MARCH 22** - The northbound I-95 ramp to eastbound I-395 will be closed between the hours of 10 p.m. and 5:30 a.m. Drivers can:
  - Exit at the NW 2 Street ramp (Exit 2B)
  - Continue north on NW 3 Avenue, then turn right on NW 8 Street
  - Continue east on NW/NE 8 Street
  - Turn left on Biscayne Boulevard to access A1A North/Miami Beach

TO VIEW A MAP OF THE DETOUR PLEASE [CLICK HERE](#)

## NW 8 STREET RAMP TO NORTHBOUND I-95 CLOSURE

- **WEDNESDAY, MARCH 13 THROUGH FRIDAY, MARCH 15 AND SUNDAY, MARCH 17 THROUGH FRIDAY, MARCH 22** - The NW 8 Street ramp to northbound I-95 will be closed between the hours of 10 p.m. to 5:30 a.m. Drivers can:
  - Go east on NW 8 Street
  - Turn left on NE 1 Avenue,
  - Enter the westbound I-395 ramp to access northbound I-95

TO VIEW A MAP OF THE DETOUR PLEASE [CLICK HERE.](#)

---

## I-395 ONGOING CONSTRUCTION ACTIVITIES

- Construction of signature bridge arch foundations east of Biscayne Boulevard
- Construction of an elevated temporary bypass roadway at the Biscayne Boulevard ramp to the MacArthur Causeway
- Bridge construction on I-395 over Biscayne Boulevard for a future traffic shift
- Nighttime Auger Cast Pile installation for support tower foundations from east of Biscayne Boulevard to NE 1 Avenue between I-395 and NE 13 Street including in the median area of Biscayne Boulevard
- Ongoing work at four of the six signature bridge arches including placement of precast arch segments
- Preparation for the next concrete pour at the signature bridge center pier structure foundation located between Biscayne Boulevard and NE 2 Avenue just north of I-395
- Nighttime roadway operations on I-395 from MacArthur Causeway to I-95
- Nighttime erection of precast arch segments over NE 2 Avenue
- Daytime and nighttime demolition of I-395 bridges from approximately NE 1 Avenue to west of NW 3 Avenue
- Construction of support structures for construction of the signature bridge deck

*Continue reading on the next page...*

## FULL CLOSURE OF EASTBOUND I-395 AT I-95

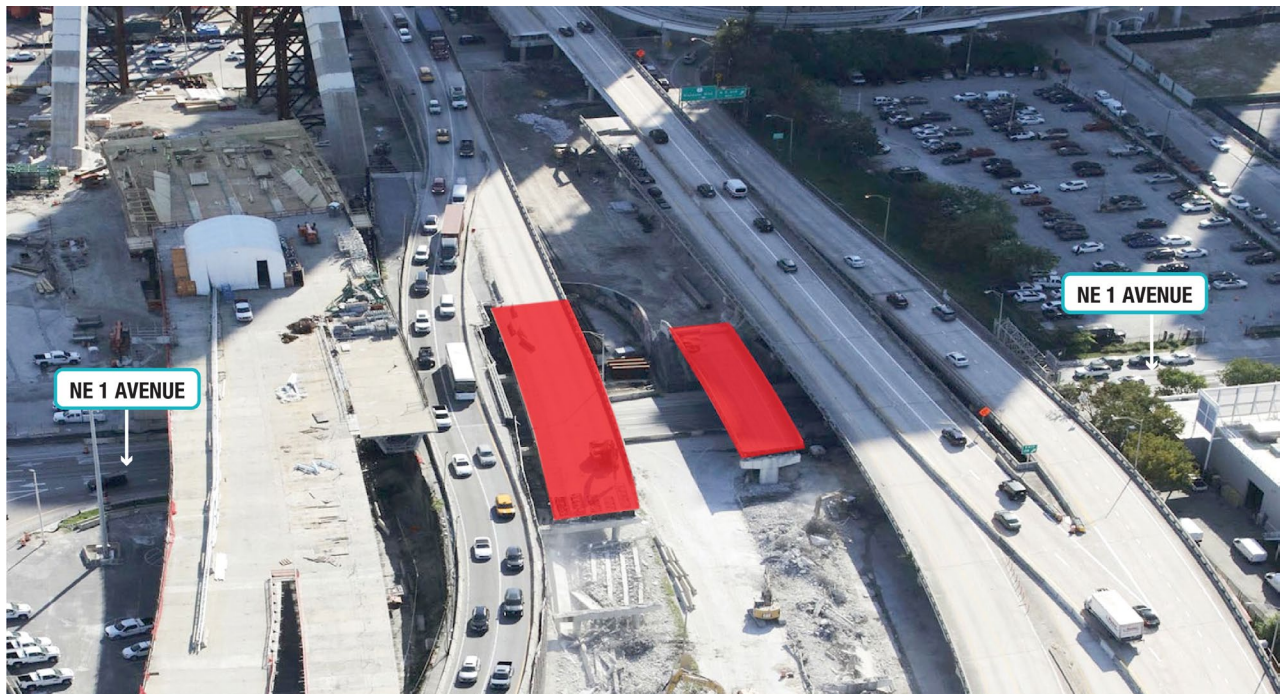
- **SUNDAY, MARCH 17 THROUGH THURSDAY, MARCH 21** - All eastbound travel lanes on I-395 will be closed at I-95 between the hours of 11 p.m. and 5:30 a.m. to implement a traffic shift. The eastbound I-395 lanes will be shifted to the right after Biscayne Boulevard. Drivers can:
  - Access the southbound I-95 exit, then exit at the NW 8 Street ramp
  - Continue south on NW 3 Court, then make a left at NW 5 Street
  - Turn left on Biscayne Boulevard to access the A1A North/Miami Beach ramp

TO VIEW A MAP OF THE DETOUR PLEASE [CLICK HERE](#).

## I-395 MAINLINE LANE CLOSURES

- **WEDNESDAY, MARCH 13 THROUGH FRIDAY, MARCH 15 AND SUNDAY, MARCH 17 THROUGH FRIDAY, MARCH 22** - One lane on mainline eastbound I-395 will be closed as needed from I-95 to Biscayne Boulevard between the hours of 10 p.m. and 5:30 a.m.
- **WEDNESDAY, MARCH 13 THROUGH FRIDAY, MARCH 15 AND SUNDAY, MARCH 17 THROUGH FRIDAY, MARCH 22** - Up to two lanes on mainline westbound I-395 will be closed as needed from Biscayne Boulevard to I-95 between the hours of 10 p.m. and 5:30 a.m.

## WEEKEND CLOSURE OF NE 1 AVENUE



*Continue reading on the next page...*

- **SATURDAY, MARCH 16 THROUGH MONDAY, MARCH 18** - NE 1 Avenue will be closed from NW 11 Street to NW 13 Street starting at 5:30 a.m. on Saturday, March 16 until 5:30 a.m. on Monday, March 18, to allow the contractor to safely remove the bridge structures over the roadway. Nearby residents and businesses should anticipate elevated noise levels during the demolition activities. The contractor will implement measures to minimize dust impacts. The operations will involve large machinery and walking through work zone is strictly prohibited.
  - Drivers on NE 1 Avenue can :
    - Turn right on NE 10 Street, then turn left on Biscayne Boulevard
    - Turn left on NE 13 Street to connects with NE 1 Avenue or access the westbound I-395 ramp

TO VIEW A MAP OF THE DETOUR PLEASE [CLICK HERE.](#)

## WESTBOUND I-395 RAMP TO SOUTHBOUND I-95 DETOUR

- **WEDNESDAY, MARCH 13, THURSDAY, MARCH 14 AND SUNDAY, MARCH 17 THROUGH FRIDAY, MARCH 22** - The westbound I-395 ramp to southbound I-95 will be closed between the hours of 10 p.m. and 5:30 a.m. Drivers can:
  - Go north on I-95, then exit at NW 62 Street
  - Turn left at NW 62 Street to access the southbound I-95 ramp

TO VIEW A MAP OF THE DETOUR PLEASE [CLICK HERE.](#)

## FULL CLOSURE OF NORTHBOUND BISCAYNE BOULEVARD

- **WEDNESDAY, MARCH 13, THURSDAY, MARCH 14 AND SUNDAY, MARCH 17 THROUGH FRIDAY, MARCH 22** - All travel lanes on northbound Biscayne Boulevard will be closed from NE 11 Street to NE 13 Street between the hours of 11 p.m. and 5:30 a.m. One southbound lane will also be closed during this time frame. Start times may vary depending on events.
  - Drivers on northbound Biscayne Boulevard can:
    - Turn left on NE 11 Street, then turn right on NE 1 Avenue
    - Turn right on NE 14 Street to connect with Biscayne Boulevard

TO VIEW A MAP OF THE DETOURS PLEASE [CLICK HERE.](#)

*Continue reading on the next page...*

## CLOSURE OF WESTBOUND MACARTHUR CAUSEWAY RAMP TO BISCAYNE BOULEVARD

- **WEDNESDAY, MARCH 13, SUNDAY, MARCH 17 AND MONDAY, MARCH 18** - The westbound MacArthur Causeway ramp to Biscayne Boulevard will be closed between the hours of 10 p.m. and 5:30 a.m. to perform paving operations. The closure on March 13 will start at 11:45 p.m. Drivers can:
  - Continue west on I-395, then access the southbound I-95 ramp
  - Exit at SW 7 Street/Brickell Avenue (Exit 1B), then turn left at SW 8 Street
  - Enter the northbound I-95 ramp, then continue north on I-95 from the right lane
  - Enter the eastbound I-395 ramp and exit at the Biscayne Boulevard/Arena ramp (Exit 2B)

TO VIEW A MAP OF THE DETOUR PLEASE [CLICK HERE](#).

## NE 2 AVENUE CLOSURES

- **WEDNESDAY, MARCH 13 AND THURSDAY, MARCH 14** - NE 2 Avenue from NE 13 Street to I-395 will be closed between the hours of 10 p.m. and 5:30 a.m. Closure on March 13 will begin at 11:30 p.m.
  - Drivers on southbound NE 2 Avenue can:
    - Turn left on NE 14 Street, then turn right on Biscayne Boulevard
    - Turn right on NE 11 Street to connect with NE 2 Avenue
  - Drivers exiting I-395 can:
    - Turn right on NE 2 Avenue
    - Turn right on NE 11 Street, then turn right on NE 1 Avenue
    - Turn right on NE 14 Street to connect with NE 2 Avenue

TO VIEW A MAP OF THE DETOUR PLEASE [CLICK HERE](#).

## CLOSURE OF NW 14 STREET FROM NW 7 AVENUE TO NW 1 AVENUE

- **MONDAY, MARCH 18 THROUGH FRIDAY, MARCH 22** - NW 14 Street will be closed as needed from NW 7 Avenue to NW 1 Avenue between the hours of 10 p.m. and 5:30 a.m. to allow the contractor to work on segmental bridge construction over the roadway. Drivers can use NW 17 Street as an alternate route. Closures will also be implemented as needed between the hours of 9 a.m. and 3:30 p.m.

TO VIEW A MAP OF THE DETOUR PLEASE [CLICK HERE](#).

*Continue reading on the next page...*

---

## SR 836 ONGOING CONSTRUCTION ACTIVITIES

- Installation of SR 836 bridge pier cap segments and beams for the double-decked roadway using the overhead lifter
- Driving steel sheets into the ground in the SR 836 median between NW 12 Avenue and NW 7 Avenue
- Demolition of the median on eastbound SR 836 over NW 14 Street and NW 10 Avenue
- Nighttime installation of Auger Cast Piles in the SR 836 median and adjacent roadways from NW 12 Avenue to I-95 for the new double-decked roadway
- Pier construction activities in the Miami River east bank between the shoreline and the fendering system
- Pier construction at the Richard E. Gerstein Justice Building parking area
- Ongoing casting of bridge caps
- Construction of double-decked piers at the core of the interchange

## SR 836 LANE CLOSURES

- **WEDNESDAY, MARCH 13 THROUGH FRIDAY, MARCH 15 AND SUNDAY, MARCH 17 THROUGH FRIDAY, MARCH 22** - Two eastbound lanes on SR 836 from NW 17 Avenue to I-95 will be closed as needed for bridge work between the hours of 9 p.m. and 5:30 a.m.
- **SATURDAY, MARCH 16 AND SATURDAY, MARCH 23** - One left eastbound lane on SR 836 will be closed between the hours of 8 a.m. to 4 p.m. to drive steel sheeting in the median.
- **WEDNESDAY, MARCH 13 THROUGH FRIDAY, MARCH 15 AND SUNDAY, MARCH 17 THROUGH FRIDAY, MARCH 22** - Two westbound lanes on SR 836 from I-95 to NW 17 Avenue will be closed as needed for bridge work between the hours of 9 p.m. and 5:30 a.m.

## EASTBOUND SR 836 RAMP TO SOUTHBOUND I-95 DETOUR

- **WEDNESDAY, MARCH 13 THROUGH FRIDAY, MARCH 15 AND MONDAY, MARCH 18 THROUGH FRIDAY, MARCH 22** - The eastbound SR 836 ramp to southbound I-95 will be closed as needed between the hours of 9 p.m. and 5:30 a.m. Drivers can:
  - Continue east on I-395
  - Exit at NE 2 Avenue/Biscayne Boulevard (Exit 2B)
  - Turn right on NE 2 Avenue, then turn right on NE 8 Street
  - Then turn left on NW 3 Court
  - Continue south on NW 3 Court to access the I-95 south ramp after NW 2 Street

TO VIEW A MAP OF THE DETOUR PLEASE [CLICK HERE](#).

*Continue reading on the next page...*



## FULL CLOSURE OF NW 17 AVENUE

- **WEDNESDAY, MARCH 13, THURSDAY, MARCH 14, SUNDAY, MARCH 17 AND MONDAY, MARCH 18** - NW 17 Avenue will be closed between NW 7 Street and the north side of SR 836 between the hours of 10 p.m. and 5:30 a.m.
  - Drivers on northbound NW 17 Avenue heading west on SR 836 can:
    - Turn west on NW 7 Street
    - Turn right on NW 27 Avenue to access the SR 836 west entrance ramp
  - Drivers on northbound NW 17 Avenue continuing north can:
    - Turn west on NW 7 Street, then turn right on NW 22 Avenue
    - Turn right on NW 20 Street to connect with NW 17 Avenue
  - Drivers on southbound NW 17 Avenue continuing south can:
    - Turn west on NW 20 Street, then turn left on NW 22 Avenue
    - Turn left on NW 7 Street to connect with NW 17 Avenue

TO VIEW A MAP OF THE DETOUR PLEASE [CLICK HERE](#)

---

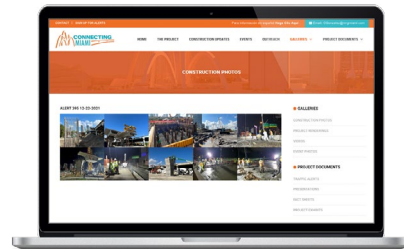
## ABOUT THE PROJECT

The I-395/SR 836/I-95 Design-Build Project will add capacity, enhance the flow of traffic and safety and improve access along I-395, SR 836 and I-95.



To view a video of the project,  
please visit:

[i395-miami.com/project-video](http://i395-miami.com/project-video)



To view updated project photos,  
please visit:

[i395-miami.com/construction-photos](http://i395-miami.com/construction-photos)

*Continue reading on the next page...*

---

**Please note that this schedule may change due to bad weather or other unforeseen conditions.**

The work is part of the I-395/SR 836/I-95 Design-Build Project that will reconstruct the I-395 corridor from the SR 836/I-395/I-95 (Midtown) Interchange to the MacArthur Causeway Bridge, including the construction of a Signature Bridge over NE 2 Avenue and Biscayne Boulevard; double-deck SR 836 from west of NW 17 Avenue to the Midtown Interchange and the replacement of the concrete pavement on I-95 from NW 8 Street to NW 29 Street.

For additional information on the project please contact Oscar Gonzalez at 786-280-0983 or via email at I-395 Project Oscar.Gonzalez2@dot.state.fl.us. Additional project information can be found on the project website, [www.I-395miami.com](http://www.I-395miami.com).

---

For information on scheduled lane closures on FDOT Construction Projects that affect traffic to/from and in Miami Beach, please [click here](#).