

# I-395/SR 836/I-95 DESIGN-BUILD PROJECT

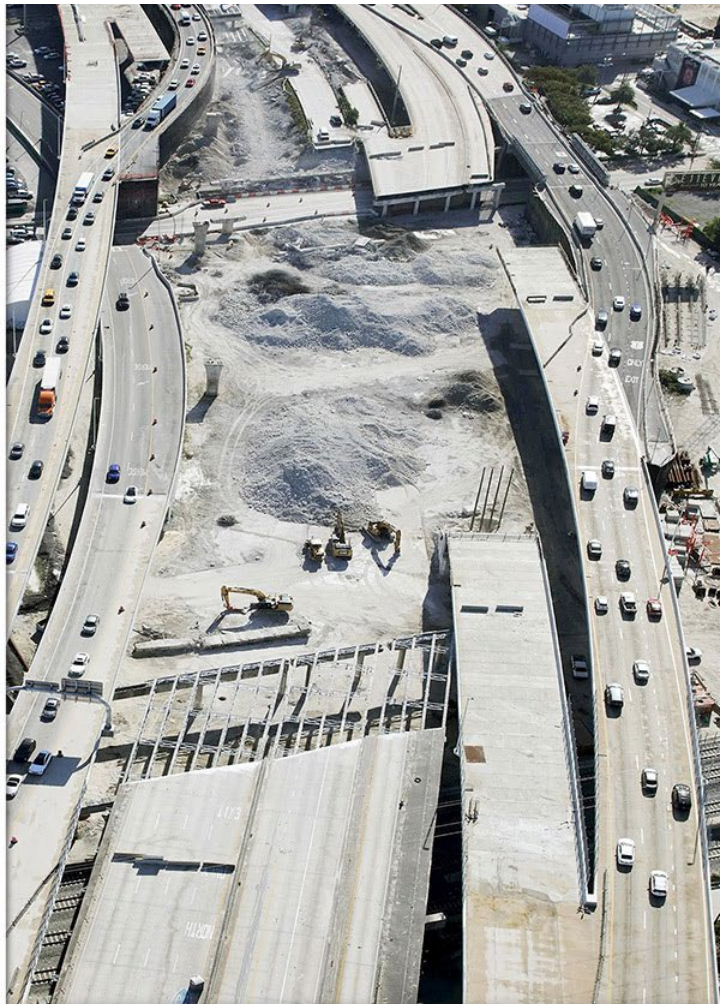
Financial Project Numbers: 251688-1-52-01, 423126-1-52-01, 423126-2-52-01, 429300-2-52-01

02-29-2024

## I-395 BRIDGE DEMOLITION UPDATE



January 24, 2024



February 26, 2024

Progress continues on the I-395 bridge demolition as the contractor has completed the section from North Miami Avenue to the FEC/Brightline railroad tracks as well as the westbound bridge over North Miami Avenue.

*Continue reading on the next page...*



Starting on **MONDAY EVENING, MARCH 4**, demolition work will begin at the bridge sections over the FEC/Brightline railroad tracks. The contractor will work Mondays through Fridays and begin to mobilize nightly at 10 p.m. with demolition activities starting once the trains stop traversing the tracks and stopping activities prior to the trains resuming operations in the morning. Due to the shortened work window the demolition activities over the tracks are expected to take approximately six weeks. Demolition work not over the rail facilities or roadways will be done during the daytime.

Starting at **10 P.M. ON FRIDAY, MARCH 8 UNTIL 5:30 A.M. ON MONDAY, MARCH 11**, North Miami Avenue will be closed from NW 13 Street to NW 11 Street to allow the contractor to safely remove the remaining bridge structure over the roadway as shown below. Drivers continuing south of NW 13 Street will only have access to the I-395 entrance ramp.

Drivers can:

- Go west on NW 14 Street, then turn left on NW 3 Avenue
- Turn left on NW 10 Street to connect with North Miami



Nearby residents and businesses should anticipate elevated noise levels during the demolition activities. The contractor will implement measures to minimize dust impacts. The operations will involve large machinery and walking through work zone is strictly prohibited. Pedestrians can use the detour shown [HERE](#).

*Continue reading on the next page...*

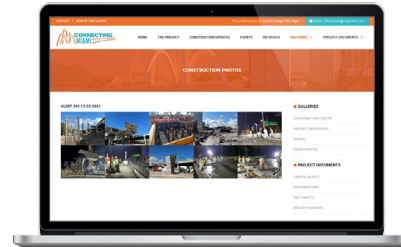
---

## ABOUT THE PROJECT

The I-395/SR 836/I-95 Design-Build Project will add capacity, enhance the flow of traffic and safety and improve access along I-395, SR 836 and I-95.



To view a video of the project,  
please visit:  
[i395-miami.com/project-video](http://i395-miami.com/project-video)



To view updated project photos,  
please visit:  
[i395-miami.com/construction-photos](http://i395-miami.com/construction-photos)

---

**Please note that this schedule may change due to bad weather or other unforeseen conditions.**

The work is part of the I-395/SR 836/I-95 Design-Build Project that will reconstruct the I-395 corridor from the SR 836/I-395/I-95 (Midtown) Interchange to the MacArthur Causeway Bridge, including the construction of a Signature Bridge over NE 2 Avenue and Biscayne Boulevard; double-deck SR 836 from west of NW 17 Avenue to the Midtown Interchange and the replacement of the concrete pavement on I-95 from NW 8 Street to NW 29 Street.

For additional information on the project please contact Oscar Gonzalez at 786-280-0983 or via email at [Oscar.Gonzalez2@dot.state.fl.us](mailto:Oscar.Gonzalez2@dot.state.fl.us). Additional project information can be found on the project website, [www.I-395miami.com](http://www.I-395miami.com).

---

For information on scheduled lane closures on FDOT Construction Projects that affect traffic to/from and in Miami Beach, please [click here](#).