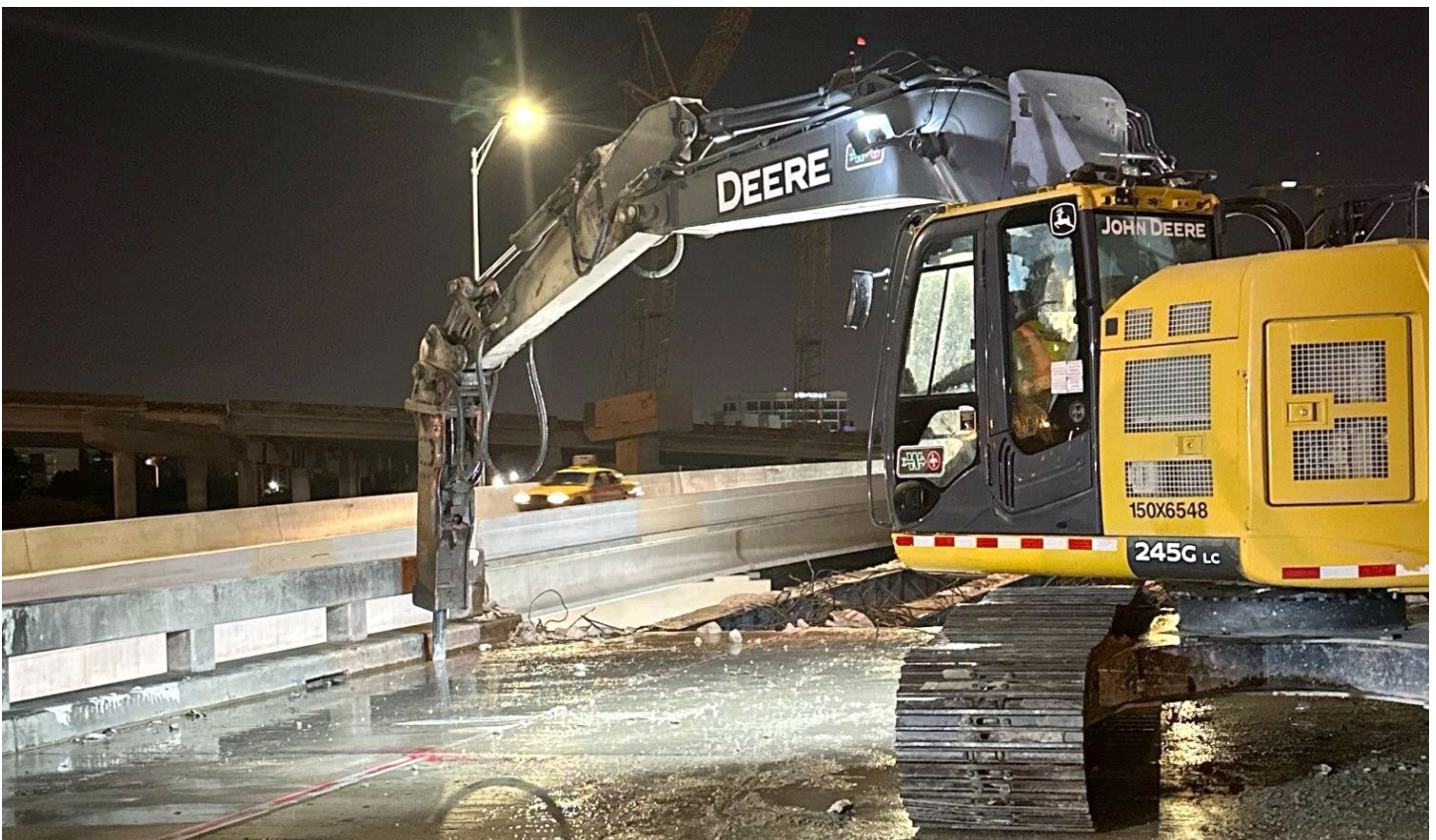


I-395/SR 836/I-95 DESIGN-BUILD PROJECT

Financial Project Numbers: 251688-1-52-01, 423126-1-52-01, 423126-2-52-01, 429300-2-52-01

12-05-2023

FULL CLOSURE OF SOUTHBOUND I-95 AND THE SOUTHBOUND I-95 RAMP TO EASTBOUND I-395 FOR NIGHTTIME BRIDGE REMOVAL



- **WEDNESDAY, DECEMBER 6 AND THURSDAY, DECEMBER 7** – All southbound lanes on I-95 be closed at SR 836 between the hours of 11 p.m. and 5:30 a.m. The southbound ramp to eastbound I-395 will also be closed during this time frame.
 - Non-Tolled detour route for southbound I-95:
 - Exit at the SR 836 West Ramp, then exit at NW 14 Street
 - Turn left at NW 12 Avenue, then turn left at NW 11 Street

Continue reading on the next page...

- Turn right at NW 8 Street Road, then turn left at NW 8 Street
- Turn right at NW 3 Court to access the I-95 south ramp after NW 2 Street
- Tolloed detour route for southbound I-95:
 - Exit at the SR 836 West Ramp, then exit at NW 12 Avenue
 - Turn left at NW 12 Avenue to access the SR 836 east entrance ramp
 - Continue east on SR 836 to access the I-95 south ramp
- Non-Tolloed detour route for eastbound I-395:
 - Exit at the SR 836 West Ramp, then exit at NW 14 Street
 - Turn left at NW 12 Avenue, then turn left at NW 11 Street
 - Turn right at NW 8 Street Road, then turn left at NW 8 Street
 - Continue east on NW 8 Street, then turn left at Biscayne Boulevard to access the A1A North/Miami Beach ramp
- Tolloed detour route for eastbound I-395:
 - Exit at the SR 836 West Ramp, then exit at NW 12 Avenue
 - Turn left at NW 12 Avenue to access the SR 836 east entrance ramp
 - Continue east on SR 836 to access eastbound I-395

TO VIEW A MAP OF THE DETOUR PLEASE [CLICK HERE](#)

FULL CLOSURE OF SOUTHBOUND I-95

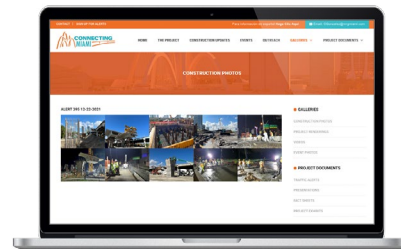
- **FRIDAY, DECEMBER 8 AND SATURDAY, DECEMBER 9** - All southbound lanes on I-95 will be closed at SR 836 between the hour of 11 p.m. and 7 a.m. drivers can use the detour route noted above.

ABOUT THE PROJECT

The I-395/SR 836/I-95 Design-Build Project will add capacity, enhance the flow of traffic and safety and improve access along I-395, SR 836 and I-95.



To view a video of the project,
please visit:
i395-miami.com/project-video



To view updated project photos,
please visit:
i395-miami.com/construction-photos

Continue reading on the next page...

Please note that this schedule may change due to bad weather or other unforeseen conditions.

The work is part of the I-395/SR 836/I-95 Design-Build Project that will reconstruct the I-395 corridor from the SR 836/I-395/I-95 (Midtown) Interchange to the MacArthur Causeway Bridge, including the construction of a Signature Bridge over NE 2 Avenue and Biscayne Boulevard; double-deck SR 836 from west of NW 17 Avenue to the Midtown Interchange and the replacement of the concrete pavement on I-95 from NW 8 Street to NW 29 Street.

For additional information on the project please contact Oscar Gonzalez at 786-280-0983 or via email at ogonzalez@mrgmiami.com. Additional project information can be found on the project website, www.I-395miami.com.

For information on scheduled lane closures on FDOT Construction Projects that affect traffic to/from and in Miami Beach, please [click here](#).