



I-395/SR 836/I-95 DESIGN-BUILD PROJECT

Financial Project Numbers: 251688-1-52-01, 423126-1-52-01, 423126-2-52-01, 429300-2-52-01

09-20-2023

WEEKLY PROJECT UPDATE

I-95 ONGOING CONSTRUCTION ACTIVITIES

- Installation of Intelligent Transportation System devices
- Driving concrete piles into the ground for foundation construction between I-395 and NW 8 Street
- Construction of a new bridge over NW 17 Street on the SR 836/I-395 ramps to northbound I-95
- Installation of new guardrail
- Traffic railing retrofit on several bridges

I-95 LANE CLOSURES

- **WEDNESDAY, SEPTEMBER 20 THROUGH FRIDAY, SEPTEMBER 22 AND SUNDAY, SEPTEMBER 24 THROUGH FRIDAY, SEPTEMBER 29** - Up to four lanes on southbound I-95 from NW 29 Street to NW 8 Street will be closed as needed between the hours of 9 p.m. and 5:30 a.m. Closures on Fridays will be implemented between the hours of 11 p.m. and 11 a.m.
- **WEDNESDAY, SEPTEMBER 20 THROUGH FRIDAY, SEPTEMBER 22 AND SUNDAY, SEPTEMBER 24 THROUGH FRIDAY, SEPTEMBER 29** -Up to four lanes on northbound I-95 will be closed as needed from NW 8 Street to NW 29 Street between the hours of 9 p.m. and 5:30 a.m. Closures on Fridays will be implemented between the hours of 11 p.m. and 11 a.m.

NORTHBOUND I-95 RAMP TO WESTBOUND SR 836 DETOUR

- **SUNDAY, SEPTEMBER 24 THROUGH FRIDAY, SEPTEMBER 29** - The northbound I-95 ramp to westbound SR 836 will be closed between the hours of 10 p.m. and 5:30 a.m. for lighting maintenance.
 - Drivers can:
 - Enter the eastbound I-395 ramp
 - Exit at NE 2 Avenue/Biscayne Boulevard (Exit 2B), then turn right on NE 2 Avenue
 - Turn right on NE 11 Street
 - Turn right on NE 1 Avenue to access westbound I-395 to continue onto westbound SR 836

TO VIEW A MAP OF THE DETOUR PLEASE [CLICK HERE](#).

Continue reading on the next page...

SOUTHBOUND I-95 RAMP TO NW 8 STREET DETOUR

- **THURSDAY, SEPTEMBER 21** - The southbound I-95 ramp to NW 8 Street will be closed as needed between the hours of 3 a.m. and 5:30 a.m. Drivers can:
 - Continue south on I-95, then exit at the SW 7 Street/Brickell Avenue (Exit 1B) ramp
 - Continue to SW 8 Street, then turn left to access the northbound I-95 ramp
 - Continue north on I-95 and exit at the NW 2 Street/Arena (Exit 2B) ramp
 - Continue north on NW 3 Avenue to connect with NW 8 Street

TO VIEW A MAP OF THE DETOUR, PLEASE [CLICK HERE](#).

95 EXPRESS CLOSURE

- **WEDNESDAY, SEPTEMBER 20** - All northbound and southbound 95 Express Lanes will be closed from SR 112 to the Golden Glades Interchange between the hours of 9:30 p.m. and 5:30 a.m.

I-395 ONGOING CONSTRUCTION ACTIVITIES

- Construction of a temporary westbound and eastbound I-395 bypass from North Miami Avenue to I-95
- Construction of signature bridge arch foundations east of Biscayne Boulevard
- Construction of an elevated temporary roadway at the Biscayne Boulevard ramp to the MacArthur Causeway
- Bridge construction on I-395 over Biscayne Boulevard for a future traffic shift
- Nighttime Auger Cast Pile installation for support tower foundations from east of Biscayne Boulevard to NE 1 Avenue between I-395 and NE 13 Street
- Ongoing work at four of the six signature bridge arches including placement of precast arch segments at arch two located just west of NE 2 Avenue
- Preparation for the next concrete pour at the signature bridge center pier foundation located between Biscayne Boulevard and NE 2 Avenue just north of I-395
- Construction of foundations for temporary arch support towers along Biscayne Boulevard
- Nighttime roadway operations on I-395 from MacArthur Causeway to I-95

Continue reading on the next page...



CONTINUOUS CLOSURE OF NORTHBOUND NORTH BAYSHORE DRIVE

- Northbound North Bayshore Drive will be continuously closed as shown above, from NE 13 Street to NE 14 Street, starting at 9 p.m. on Sunday, September 24, until 5 p.m. on Monday, October 2, to allow the contractor to install new drainage pipes and structures. During the closure, drivers can use the detour below:
 - Continue to Biscayne Boulevard and turn right
 - Turn right on NE 14 Street to connect with North Bayshore Drive

Continue reading on the next page...

REVISED DATE: WESTBOUND I-395 DETOUR AT I-95

- **MONDAY, SEPTEMBER 25** - All westbound I-395 travel lanes continuing onto westbound SR 836 will be closed at I-95 between the hours of 11 p.m. and 5:30 a.m. Drivers can:
 - Access the southbound I-95 ramp
 - Exit at SW 7 Street/Brickell Avenue (Exit 1B), then turn left at SW 8 Street
 - Enter the northbound I-95 ramp, then exit at the westbound SR 836 ramp

TO VIEW A MAP OF THE DETOUR PLEASE [CLICK HERE](#).

I-395 MAINLINE LANE CLOSURES

- **WEDNESDAY, SEPTEMBER 20 THROUGH FRIDAY, SEPTEMBER 22 AND SUNDAY, SEPTEMBER 24 THROUGH FRIDAY, SEPTEMBER 29** - One lane on mainline eastbound I-395 will be closed as needed from I-95 to Biscayne Boulevard between the hours of 10 p.m. and 5:30 a.m.
- **WEDNESDAY, SEPTEMBER 20 THROUGH FRIDAY, SEPTEMBER 22 AND SUNDAY, SEPTEMBER 24 THROUGH FRIDAY, SEPTEMBER 29** - Up to two lanes on mainline westbound I-395 will be closed as needed from Biscayne Boulevard to I-95 between the hours of 10 p.m. and 5:30 a.m.

WESTBOUND I-395 RAMP TO NORTHBOUND I-95 DETOUR

- **WEDNESDAY, SEPTEMBER 20** - The westbound I-395 ramp to northbound I-95 will be closed as needed between the hours of 12:30 a.m. and 5:30 a.m. Drivers can:
 - Access the southbound I-95 ramp
 - Exit at SW 7 Street/Brickell Avenue (Exit 1B), then turn left at SW 8 Street
 - Enter the northbound I-95 ramp, then continue north on I-95

TO VIEW A MAP OF THE DETOUR PLEASE [CLICK HERE](#).

WESTBOUND I-395 RAMP TO SOUTHBOUND I-95 DETOUR

- **SUNDAY, SEPTEMBER 24 THROUGH FRIDAY, SEPTEMBER 29** - The westbound I-395 ramp to southbound I-95 will be closed as needed between the hours of 10 p.m. and 5:30 a.m. Drivers can:
 - Go north on I-95, then exit at NW 62 Street
 - Turn left at NW 62 Street to access the southbound I-95 ramp

TO VIEW A MAP OF THE DETOUR PLEASE [CLICK HERE](#).

Continue reading on the next page...

NE 2 AVENUE FULL CLOSURE

- **SUNDAY, SEPTEMBER 24 THROUGH FRIDAY, SEPTEMBER 29** - NE 2 Avenue from NE 13 Street to I-395 will be closed between the hours of 10 p.m. and 5:30 a.m. Closures on September 28 and 29 will begin at 11:55 p.m.
 - Drivers on southbound NE 2 Avenue can:
 - Turn left on NE 14 Street, then turn right on Biscayne Boulevard
 - Turn right on NE 11 Street to connect with NE 2 Avenue
 - Drivers exiting I-395 can:
 - Continue east on NE 11 Terrace, then turn left on Biscayne Boulevard
 - Turn left on NE 14 Street to connect with NE 2 Avenue

TO VIEW A MAP OF THE DETOUR PLEASE [CLICK HERE](#).

LONG-TERM CLOSURE OF NW 14 TERRACE

- NW 14 Terrace will be closed from NW 3 Avenue to NW 2 Avenue until further notice to allow the contractor to construct bridge foundations. Drivers can use NW 15 Street as an alternate.

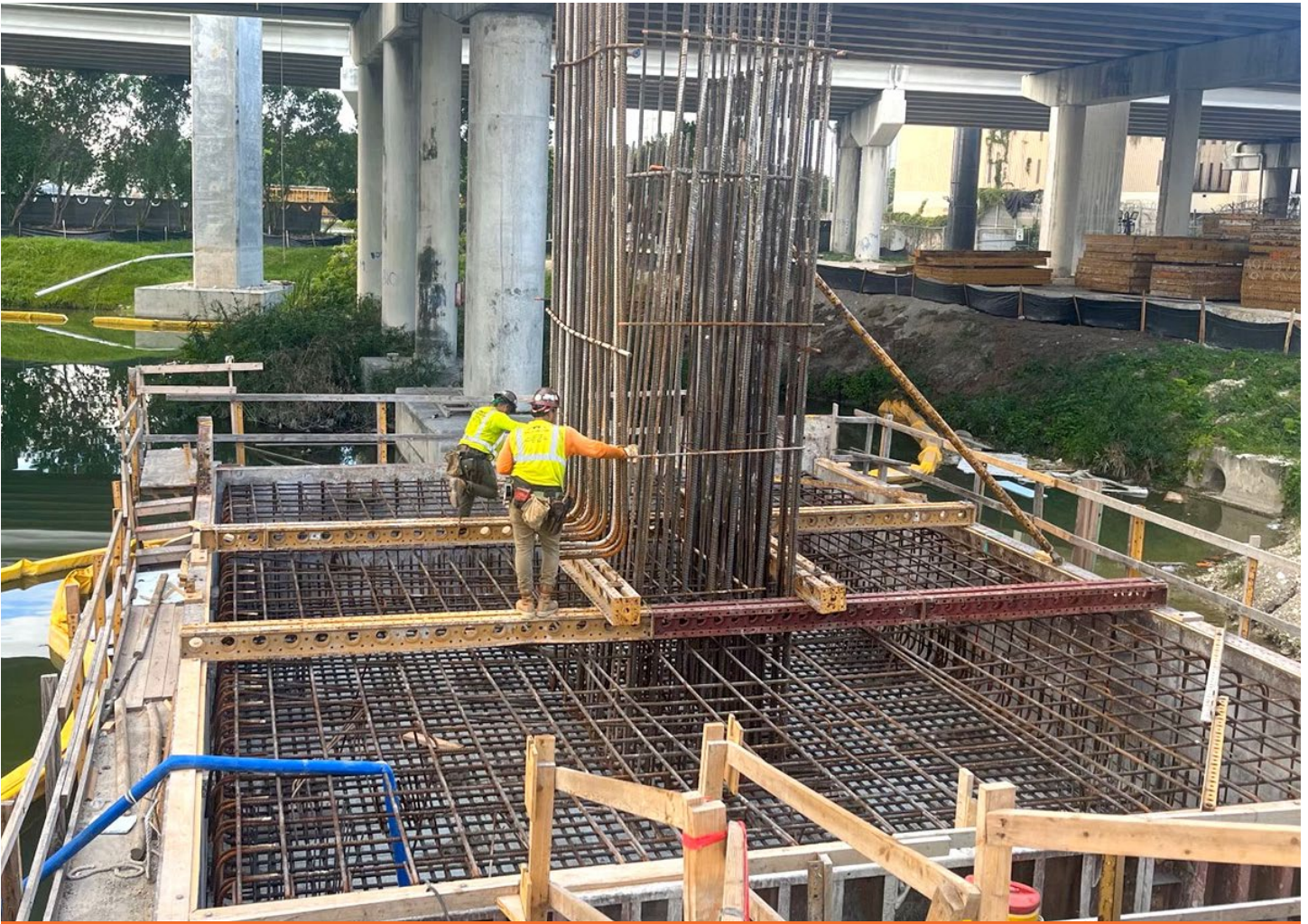
LONG-TERM CLOSURE OF NW 1 COURT

- NW 1 Court from NW 13 Street to NW 14 Street and NW 13 Street from NW 1 Avenue to NW 1 Court will remain continuously closed until further notice to allow the contractor to work on bridges over the roadways.

TO VIEW A MAP OF THE DETOUR PLEASE [CLICK HERE](#)

Continue reading on the next page...

SR 836 ONGOING CONSTRUCTION ACTIVITIES



Crews tying reinforcing steel for a bridge foundation at the core of the interchange

- Installation of SR 836 bridge pier cap segments and beams for the double-decked roadway using the overhead lifter
- Demolition of the median on eastbound SR 836 over NW 14 Street and NW 10 Avenue
- Nighttime installation of Auger Cast Piles in the SR 836 median from NW 12 Avenue to I-95 for the new double-decked roadway
- Drilled shaft foundation construction activities in the Miami River west bank between the shoreline and the fendering system
- Pier construction at the Richard E. Gerstein Justice Building parking area
- Ongoing casting of bridge caps
- Construction of double-decked piers at the core of the interchange

Continue reading on the next page...

FULL CLOSURE OF SR 836

- **TUESDAY, SEPTEMBER 26 THROUGH WEDNESDAY, SEPTEMBER 27** - All eastbound and westbound lanes on SR 836 will be closed from NW 12 Avenue to NW 17 Avenue. The eastbound closures will be implemented between the hours of 10 p.m. and 5:30 a.m. and westbound between the hours of 11 p.m. and 5:30 a.m.
 - Drivers on eastbound SR 836 can:
 - Exit at the NW 17 Avenue South (Ballpark) ramp, then turn right at NW 17 Avenue
 - Turn left at NW 7 Street
 - Turn left at NW 12 Avenue to connect with eastbound SR 836 ramp
 - Drivers on westbound SR 836 can:
 - Exit at the NW 12 Avenue ramp, then turn left on NW 12 Avenue
 - Turn right on NW 7 Street
 - Turn right on NW 27 Avenue and continue north to connect with the westbound SR 836 ramp

TO VIEW A MAP OF THE DETOUR PLEASE [CLICK HERE.](#)

SR 836 LANE CLOSURES

- **WEDNESDAY, SEPTEMBER 20 THROUGH FRIDAY, SEPTEMBER 22 AND SUNDAY, SEPTEMBER 24 THROUGH FRIDAY, SEPTEMBER 29** - Two eastbound lanes on SR 836 from NW 17 Avenue to I-95 will be closed as needed for bridge work between the hours of 9 p.m. and 5:30 a.m.
- **WEDNESDAY, SEPTEMBER 20 THROUGH FRIDAY, SEPTEMBER 22 AND SUNDAY, SEPTEMBER 24 THROUGH FRIDAY, SEPTEMBER 29** - Two westbound lanes on SR 836 from I-95 to NW 17 Avenue will be closed as needed for bridge work between the hours of 9 p.m. and 5:30 a.m.

EASTBOUND SR 836 RAMP TO NORTHBOUND I-95 DETOUR

- **THURSDAY, SEPTEMBER 21** - The eastbound SR 836 ramp to northbound I-95 will be closed as needed between the hours of 9 p.m. and 5:30 a.m. Drivers can:
 - Access the southbound I-95/NW 8 Street ramp, then exit at the NW 8 Street/PortMiami ramp
 - Turn left at NW 8 Street
 - Turn left at NW 3 Avenue to access the northbound I-95 ramp

TO VIEW A MAP OF THE DETOUR PLEASE [CLICK HERE.](#)

Continue reading on the next page...

EASTBOUND SR 836 RAMP TO SOUTHBOUND I-95 DETOUR

- **SUNDAY, SEPTEMBER 24 THROUGH FRIDAY, SEPTEMBER 29** - The eastbound SR 836 ramp to southbound I-95 will be closed as needed between the hours of 9 p.m. and 5:30 a.m. Drivers can:
 - Access the ramp to I-95 South/NW 8 Street, then exit at NW 8 Street
 - Continue south on NW 3 Court to access the I-95 south ramp after NW 2 Street

TO VIEW A MAP OF THE DETOUR PLEASE [CLICK HERE.](#)

NW 14 STREET CLOSURE

- **THURSDAY, SEPTEMBER 21** - NW 14 Street will be closed from NW 7 Avenue to NW 10 Avenue between the hours of 3 a.m. and 5:30 a.m.
 - Drivers on westbound NW 14 Street can:
 - Turn right on NW 7 Avenue, then turn left on NW 17 Street
 - Turn left on NW 9 Avenue and follow NW 10 Avenue to connect with NW 14 Street
 - Drivers on eastbound NW 14 Street can:
 - Turn left on NW 10 Avenue and follow NW 9 Avenue, then turn right on NW 17 Street
 - Turn right on NW 7 Avenue to connect with NW 14 Street

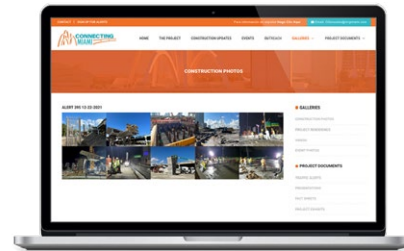
TO VIEW A MAP OF THE DETOUR PLEASE [CLICK HERE.](#)

ABOUT THE PROJECT

The I-395/SR 836/I-95 Design-Build Project will add capacity, enhance the flow of traffic and safety and improve access along I-395, SR 836 and I-95.



To view a video of the project,
please visit:
i395-miami.com/project-video



To view updated project photos,
please visit:
i395-miami.com/construction-photos

Continue reading on the next page...

Please note that this schedule may change due to bad weather or other unforeseen conditions.

The work is part of the I-395/SR 836/I-95 Design-Build Project that will reconstruct the I-395 corridor from the SR 836/I-395/I-95 (Midtown) Interchange to the MacArthur Causeway Bridge, including the construction of a Signature Bridge over NE 2 Avenue and Biscayne Boulevard; double-deck SR 836 from west of NW 17 Avenue to the Midtown Interchange and the replacement of the concrete pavement on I-95 from NW 8 Street to NW 29 Street.

For additional information on the project please contact Oscar Gonzalez at 786-280-0983 or via email at ogonzalez@mrgmiami.com. Additional project information can be found on the project website, www.I-395miami.com.

For information on scheduled lane closures on FDOT Construction Projects that affect traffic to/from and in Miami Beach, please [click here](#).