

# I-395/SR 836/I-95 DESIGN-BUILD PROJECT

Financial Project Numbers: 251688-1-52-01, 423126-1-52-01, 423126-2-52-01, 429300-2-52-01

08-23-2023

## WEEKLY PROJECT UPDATE

### I-95 ONGOING CONSTRUCTION ACTIVITIES



Installation of support structure for an electronic message board over Biscayne Boulevard and NE 17 Street

- Installation of Intelligent Transportation System devices
- Driving concrete piles into the ground for foundation construction between I-395 and NW 8 Street
- Construction of a new bridge over NW 17 Street on the SR 836/I-395 ramps to northbound I-95
- Installation of new guardrail
- Traffic railing retrofit on several bridges

*Continue reading on the next page...*

## I-95 LANE CLOSURES

- **WEDNESDAY, AUGUST 23 THROUGH FRIDAY, AUGUST 25 AND SUNDAY, AUGUST 27 THROUGH FRIDAY, SEPTEMBER 1** - Up to four lanes on southbound I-95 from NW 29 Street to NW 8 Street will be closed as needed between the hours of 9 p.m. and 5:30 a.m. Closures on Fridays will be implemented between the hours of 11 p.m. and 11 a.m.
- **WEDNESDAY, AUGUST 23 THROUGH FRIDAY, AUGUST 25 AND SUNDAY, AUGUST 27 THROUGH FRIDAY, SEPTEMBER 1** - Up to four lanes on northbound I-95 will be closed as needed from NW 8 Street to NW 29 Street between the hours of 9 p.m. and 5:30 a.m. Closures on Fridays will be implemented between the hours of 11 p.m. and 11 a.m.

## NORTHBOUND I-95 RAMP TO EASTBOUND I-395 DETOUR

- **WEDNESDAY, AUGUST 23 THROUGH FRIDAY, AUGUST 25** - The northbound I-95 ramp to eastbound I-395 will be closed between the hours of 10 p.m. and 5:30 a.m. Drivers can:
  - Exit at the NW 2 Street ramp (Exit 2B)
  - Continue north on NW 3 Avenue, then turn right on NW 8 Street
  - Continue east on NW/NE 8 Street
  - Turn left on Biscayne Boulevard to access A1A North/Miami Beach

TO VIEW A MAP OF THE DETOUR PLEASE [CLICK HERE](#).

## SOUTHBOUND I-95 RAMP TO NW 8 STREET DETOUR

- **WEDNESDAY, AUGUST 23 AND MONDAY, AUGUST 28 THROUGH FRIDAY, SEPTEMBER 1** - The southbound I-95 ramp to NW 8 Street will be closed as needed between the hours of 10 p.m. and 5:30 a.m. Drivers can:
  - Continue south on I-95, then exit at the SW 7 Street/Brickell Avenue (Exit 1B) ramp
  - Continue to SW 8 Street, then turn left to access the northbound I-95 ramp
  - Continue north on I-95 and exit at the NW 2 Street/Arena (Exit 2B) ramp
  - Continue north on NW 3 Avenue to connect with NW 8 Street

TO VIEW A MAP OF THE DETOUR, PLEASE [CLICK HERE](#).

## CLOSURE OF NW 11 STREET FROM NW 3 AVENUE AND NW 5 AVENUE

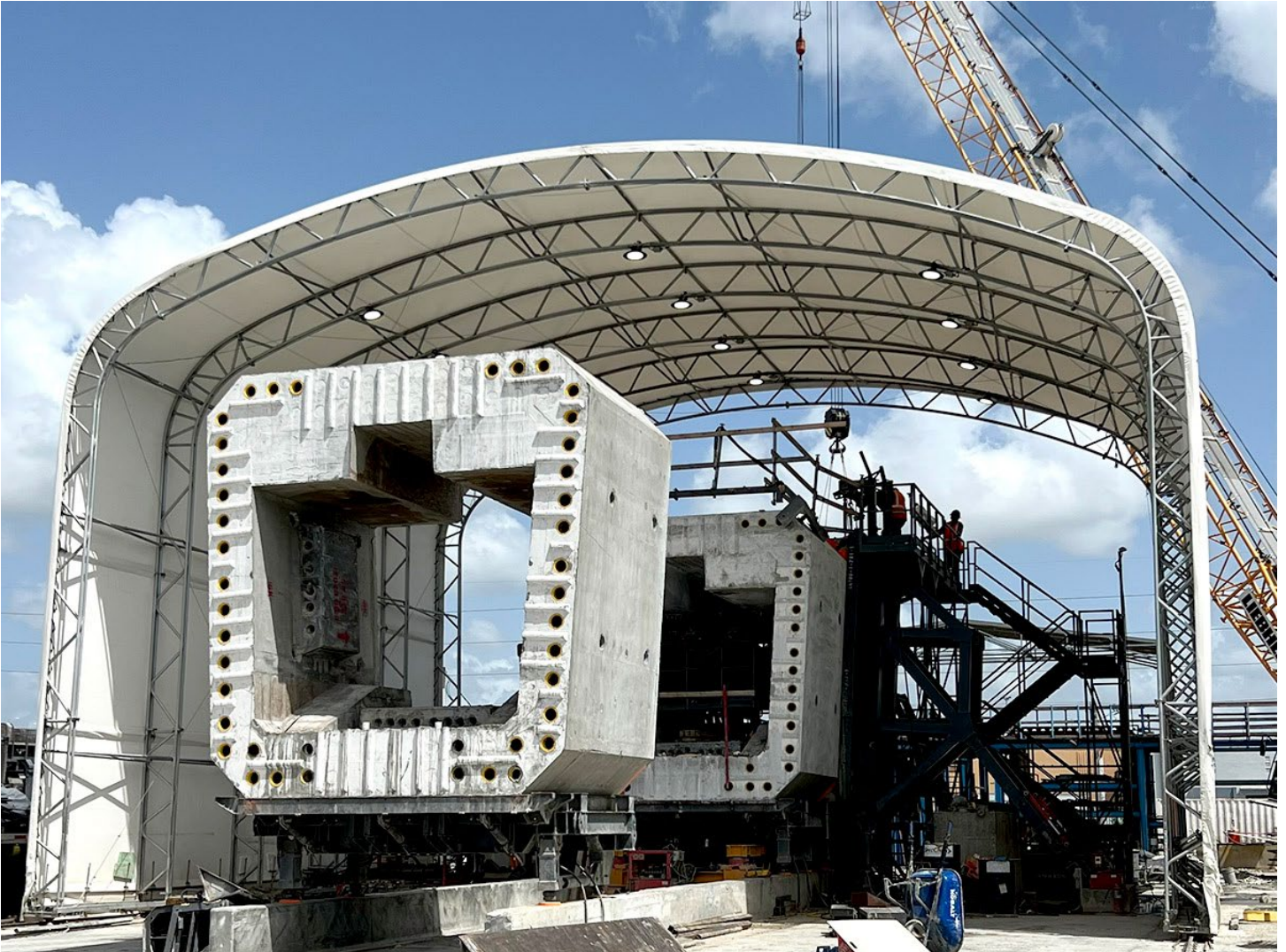
- **WEDNESDAY, AUGUST 23** - NW 11 Street will be closed from NW 3 Avenue to NW 5 Avenue between the hours of 9 p.m. and 5:30 a.m. to safely remove concrete railing over the roadway. Drivers can:
  - Go north on NW 3 Avenue, turn left on NW 7 Avenue
  - Turn left on NW 8 Street
  - Turn left on NW 5 Avenue to connect to with NW 11 Street

*Continue reading on the next page...*

## CLOSURE OF NW 17 STREET UNDER I-95

- **TUESDAY, AUGUST 29** - NW 17 Street will be closed from NW 5 Avenue to NW 7 Avenue between the hours of 9 p.m. and 6 a.m. Drivers can use NW 20 Street as an alternate route.

## I-395 ONGOING CONSTRUCTION ACTIVITIES



Ongoing casting of precast arch segments for the I-395 signature bridge. A total of 345 precast arch segments will be used to build the six signature bridge arches.

- Construction of a temporary westbound and eastbound I-395 bypass from North Miami Avenue to I-95
- Construction of signature bridge arch foundations east of Biscayne Boulevard
- Construction of an elevated temporary roadway at the Biscayne Boulevard ramp to the MacArthur Causeway

*Continue reading on the next page...*

- Bridge construction on I-395 over Biscayne Boulevard for a future traffic shift
- Nighttime Auger Cast Pile installation for support tower foundations from east of Biscayne Boulevard to NE 1 Avenue between I-395 and NE 13 Street
- Ongoing work at four of the six signature bridge arches including placement of precast arch segments at arch two located just west of NE 2 Avenue
- Preparation for the next concrete pour at the signature bridge center pier foundation located between Biscayne Boulevard and NE 2 Avenue just north of I-395
- Construction of foundations for temporary arch support towers along Biscayne Boulevard
- Nighttime roadway operations on I-395 from MacArthur Causeway to I-95

## I-395 MAINLINE LANE CLOSURES

- **WEDNESDAY, AUGUST 23 THROUGH FRIDAY, AUGUST 25 AND SUNDAY, AUGUST 27 THROUGH FRIDAY, SEPTEMBER 1** - One lane on mainline eastbound I-395 will be closed as needed from I-95 to Biscayne Boulevard between the hours of 10 p.m. and 5:30 a.m.
- **WEDNESDAY, AUGUST 23 THROUGH FRIDAY, AUGUST 25 AND SUNDAY, AUGUST 27 THROUGH FRIDAY, SEPTEMBER 1** - Up to two lanes on mainline westbound I-395 will be closed as needed from Biscayne Boulevard to I-95 between the hours of 10 p.m. and 5:30 a.m.

## WESTBOUND I-395 RAMP TO NORTHBOUND I-95 DETOUR

- **TUESDAY, AUGUST 29** - The westbound I-395 ramp to northbound I-95 will be closed as needed between the hours of 10 p.m. and 5:30 a.m. Drivers can:
  - Access the southbound I-95 ramp
  - Exit at SW 7 Street/Brickell Avenue (Exit 1B), then turn left at SW 8 Street
  - Enter the northbound I-95 ramp, then continue north on I-95

TO VIEW A MAP OF THE DETOUR PLEASE [CLICK HERE.](#)

## WESTBOUND I-395 RAMP TO SOUTHBOUND I-95 DETOUR

- **THURSDAY, AUGUST 24 AND SUNDAY, AUGUST 27 THROUGH FRIDAY, SEPTEMBER 1** - The westbound I-395 ramp to southbound I-95 will be closed between the hours of 10 p.m. and 5:30 a.m. Drivers can:
  - Go north on I-95, then exit at NW 62 Street
  - Turn left at NW 62 Street to access the southbound I-95 ramp

TO VIEW A MAP OF THE DETOUR PLEASE [CLICK HERE.](#)

*Continue reading on the next page...*

## CLOSURE OF NW 14 STREET FROM NW 7 AVENUE TO NW 1 AVENUE

- **WEDNESDAY, AUGUST 23 THROUGH FRIDAY, AUGUST 25 AND SUNDAY, AUGUST 27 THROUGH FRIDAY, SEPTEMBER 1** - NW 14 Street will be closed as needed from NW 7 Avenue to NW 1 Avenue between the hours of 10 p.m. and 5:30 a.m. to allow the contractor to work on segmental bridge construction over the roadway. Drivers can use NW 17 Street as an alternate route. Closures will also be implemented as needed between the hours of 9 a.m. and 3:30 p.m.

TO VIEW A MAP OF THE DETOUR PLEASE [CLICK HERE](#).

## NE 1 AVENUE DETOUR

- **SUNDAY, AUGUST 27 THROUGH FRIDAY, SEPTEMBER 1** - NE 1 Avenue will be closed from NE 13 Street to I-395 between the hours of 11 p.m. and 6 a.m. to allow the contractor to move a crane across the roadway.
  - Drivers north of I-395 can:
    - Go west on NE 14 Street, turn left on North Miami Avenue
    - Turn left on NE 10 Street to connect with NE 1 Avenue
  - Drivers south of I-395 can:
    - Turn left on NE 11 Street, then turn right on NW 1 Avenue
    - Turn right on NW 12 Street, then turn left on NW Miami Court
    - Turn right on NE 14 Street to connect with NE 1 Avenue

TO VIEW A MAP OF THE DETOUR PLEASE [CLICK HERE](#).

## FULL NE 13 STREET CLOSURE

- **SUNDAY, AUGUST 27 THROUGH FRIDAY, SEPTEMBER 1** - NE 13 Street will be closed from NE 2 Avenue to NE 1 Avenue between the hours of 11 p.m. and 5:30 a.m. Drivers can:
  - Turn left on NE 2 Avenue, then turn right on NE 11 Street
  - Turn right on NE 1 Avenue to access the I-395 ramp or continue north

TO VIEW A MAP OF THE DETOUR PLEASE [CLICK HERE](#).

## DAYTIME NE 13 STREET LANE CLOSURE

- **WEDNESDAY, AUGUST 23 THROUGH FRIDAY, AUGUST 25 AND SUNDAY, AUGUST 27 THROUGH FRIDAY, SEPTEMBER 1** - One lane on NE 13 Street from NE 2 Avenue to NE 1 Avenue will be closed as needed between the hours of 9 a.m. and 3:30 p.m.

*Continue reading on the next page...*

## NE 2 AVENUE LANE CLOSURE

- **MONDAY, AUGUST 28 THROUGH FRIDAY, SEPTEMBER 1** - One southbound lane on NE 2 Avenue from NE 13 Street to I-395 will be closed as needed between the hours of 9 a.m. and 3:30 p.m. and 9 p.m. and 5:30 a.m.

## NW 3 AVENUE LANE CLOSURES

- **WEDNESDAY, AUGUST 23 THROUGH FRIDAY, AUGUST 25** - One lane on NW 3 Avenue from NW 14 Street to NW 13 Street will be closed as needed between the hours of 9 a.m. and 3:30 p.m.

## NW 2 AVENUE CLOSURE

- **MONDAY, AUGUST 28 THROUGH FRIDAY, SEPTEMBER 1** - NW 2 Avenue from NW 14 Street to NW 13 Street will be closed as needed between the hours of 9 p.m. and 5:30 a.m. Drivers can use NW 1 Place as an alternate route.

## LONG-TERM CLOSURE OF NW 14 TERRACE

- NW 14 Terrace will be closed from NW 3 Avenue to NW 2 Avenue until further notice to allow the contractor to construct bridge foundations. Drivers can use NW 15 Street as an alternate.

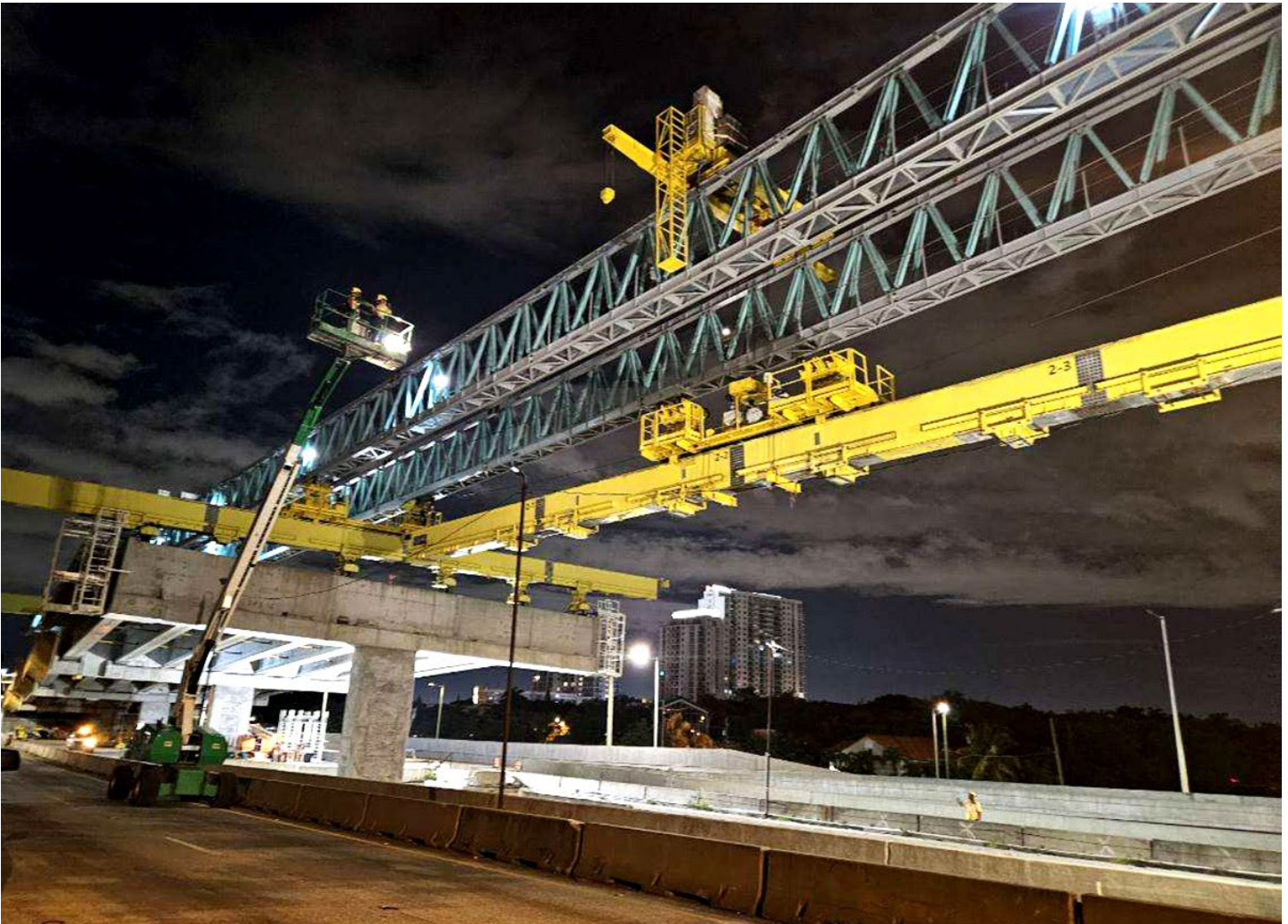
## LONG-TERM CLOSURE OF NW 1 COURT

- NW 1 Court from NW 13 Street to NW 14 Street and NW 13 Street from NW 1 Avenue to NW 1 Court will remain continuously closed until further notice to allow the contractor to work on bridges over the roadways.

TO VIEW A MAP OF THE DETOUR PLEASE [CLICK HERE](#)

*Continue reading on the next page...*

## SR 836 ONGOING CONSTRUCTION ACTIVITIES



SR 836 bridge cap and beam gantry being moved to the east over NW 17 Avenue to erect bridge caps

- Installation of SR 836 bridge pier cap segments and beams for the double-decked roadway using the overhead lifter
- Demolition of the median on eastbound SR 836 over NW 14 Street and NW 10 Avenue
- Nighttime installation of Auger Cast Piles in the SR 836 median from NW 12 Avenue to I-95 for the new double-decked roadway
- Drilled shaft foundation construction activities in the Miami River west bank between the shoreline and the fendering system
- Pier construction at the Richard E. Gerstein Justice Building parking area
- Ongoing casting of bridge caps
- Construction of double-decked piers at the core of the interchange

*Continue reading on the next page...*

## FULL CLOSURE OF SR 836

- **THURSDAY, AUGUST 24 AND SUNDAY, AUGUST 27 THROUGH TUESDAY, AUGUST 29 -**  
All eastbound and westbound lanes on SR 836 will be closed from NW 12 Avenue to NW 17 Avenue. The eastbound lanes will be closed between the hours of 10 p.m. and 5:30 a.m., and the westbound lanes will be closed between the hours of 11 p.m. and 5:30 a.m.
  - Drivers on eastbound SR 836 can:
    - Exit at the NW 17 Avenue South (Ballpark) ramp, then turn right at NW 17 Avenue
    - Turn left at NW 7 Street
    - Turn left at NW 12 Avenue to connect with eastbound SR 836 ramp
  - Drivers on westbound SR 836 can:
    - Exit at the NW 12 Avenue ramp, then turn left on NW 12 Avenue
    - Turn right on NW 7 Street
    - Turn right on NW 27 Avenue and continue north to connect with the westbound SR 836 ramp

TO VIEW A MAP OF THE DETOUR PLEASE [CLICK HERE.](#)

## FULL CLOSURE OF NW 17 AVENUE

- **THURSDAY, AUGUST 24 AND SUNDAY, AUGUST 27 THROUGH TUESDAY, AUGUST 29 -** NW 17 Avenue will be closed from NW 8 Street to the north side of SR 836 between the hours of 10 p.m. and 5 a.m.
  - Drivers on northbound NW 17 Avenue heading west on SR 836 can:
    - Turn west on NW 7 Street
    - Turn right on NW 27 Avenue to access the SR 836 west entrance ramp
  - Drivers on northbound NW 17 Avenue continuing north can:
    - Turn west on NW 7 Street, then turn right on NW 22 Avenue
    - Turn right on NW 20 Street to connect with NW 17 Avenue
  - Drivers on southbound NW 17 Avenue continuing south can:
    - Turn west on NW 20 Street, then turn left on NW 22 Avenue
    - Turn left on NW 7 Street to connect with NW 17 Avenue

TO VIEW A MAP OF THE DETOUR PLEASE [CLICK HERE.](#)

*Continue reading on the next page...*



## SR 836 LANE CLOSURES

- **WEDNESDAY, AUGUST 23, THURSDAY, AUGUST 24 AND SUNDAY, AUGUST 27 THROUGH THURSDAY, AUGUST 31** - Two eastbound lanes on SR 836 from NW 17 Avenue to I-95 will be closed as needed for bridge work between the hours of 9 p.m. and 5:30 a.m.

**WEDNESDAY, AUGUST 23, THURSDAY, AUGUST 24 AND SUNDAY, AUGUST 27 THROUGH THURSDAY, AUGUST 31** - Two westbound lanes on SR 836 from I-95 to NW 17 Avenue will be closed as needed for bridge work between the hours of 9 p.m. and 5:30 a.m.

## EASTBOUND SR 836 RAMP TO SOUTHBOUND I-95 DETOUR

- **WEDNESDAY, AUGUST 23, THURSDAY, AUGUST 24 AND SUNDAY, AUGUST 27 THROUGH THURSDAY, AUGUST 31** - The eastbound SR 836 ramp to southbound I-95 will be closed as needed between the hours of 10 p.m. and 5:30 a.m. Drivers can:
  - Continue east on I-395
  - Exit at NE 2 Avenue/Biscayne Boulevard (Exit 2A)
  - Turn right on NE 2 Avenue, then turn right on NE 11 Street
  - Turn right on NE 1 Avenue to access the I-95 south ramp

TO VIEW A MAP OF THE DETOUR, PLEASE [CLICK HERE](#).

## EASTBOUND SR 836 RAMP TO NW 8 STREET DETOUR

- **WEDNESDAY, AUGUST 23, THURSDAY, AUGUST 24 AND SUNDAY, AUGUST 27 THROUGH THURSDAY, AUGUST 31** - The eastbound SR 836 ramp to NW 8 Street will be closed as needed between the hours of 9 p.m. and 5:30 a.m. Drivers can:
  - Access the southbound I-95 ramp
  - Continue south on I-95, then exit at the SW 7 Street/Brickell Avenue (Exit 1B) ramp
  - Turn left on SW 8 Street, then turn left on SW 2 Avenue
  - Continue north on SW/NW 2 Avenue to connect with NW 8 Street

TO VIEW A MAP OF THE DETOUR PLEASE [CLICK HERE](#).

*Continue reading on the next page...*

## NORTHBOUND NW 17 AVENUE RAMP TO WESTBOUND SR 836 CLOSURE

- **WEDNESDAY, AUGUST 23, MONDAY, AUGUST 28 AND TUESDAY, AUGUST 29** - The northbound NW 17 Avenue ramp to westbound SR 836 will be closed as needed between the hours of 10 p.m. and 5:30 a.m. Drivers can:
  - Turn west on NW 7 Street
  - Turn right on NW 27 Avenue to access the SR 836 west entrance ramp

TO VIEW A MAP OF THE DETOUR PLEASE [CLICK HERE](#).

## NW 14 STREET CLOSURE

- **WEDNESDAY, AUGUST 23 THROUGH FRIDAY, AUGUST 25** - NW 14 Street will be closed from NW 7 Avenue to NW 10 Avenue between the hours of 9 p.m. and 5:30 a.m.
  - Drivers on westbound NW 14 Street can:
    - Turn right on NW 7 Avenue, then turn left on NW 17 Street
    - Turn left on NW 9 Avenue and follow NW 10 Avenue to connect with NW 14 Street
  - Drivers on eastbound NW 14 Street can:
    - Turn left on NW 10 Avenue and follow NW 9 Avenue, then turn right on NW 17 Street
    - Turn right on NW 7 Avenue to connect with NW 14 Street

TO VIEW A MAP OF THE DETOUR PLEASE [CLICK HERE](#).

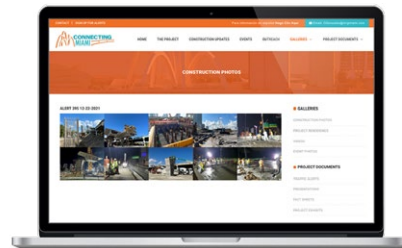
---

## ABOUT THE PROJECT

The I-395/SR 836/I-95 Design-Build Project will add capacity, enhance the flow of traffic and safety and improve access along I-395, SR 836 and I-95.



To view a video of the project,  
please visit:  
[i395-miami.com/project-video](http://i395-miami.com/project-video)



To view updated project photos,  
please visit:  
[i395-miami.com/construction-photos](http://i395-miami.com/construction-photos)

*Continue reading on the next page...*

---

**Please note that this schedule may change due to bad weather or other unforeseen conditions.**

The work is part of the I-395/SR 836/I-95 Design-Build Project that will reconstruct the I-395 corridor from the SR 836/I-395/I-95 (Midtown) Interchange to the MacArthur Causeway Bridge, including the construction of a Signature Bridge over NE 2 Avenue and Biscayne Boulevard; double-deck SR 836 from west of NW 17 Avenue to the Midtown Interchange and the replacement of the concrete pavement on I-95 from NW 8 Street to NW 29 Street.

For additional information on the project please contact Oscar Gonzalez at 786-280-0983 or via email at [ogonzalez@mrgmiami.com](mailto:ogonzalez@mrgmiami.com). Additional project information can be found on the project website, [www.I-395miami.com](http://www.I-395miami.com).

---

For information on scheduled lane closures on FDOT Construction Projects that affect traffic to/from and in Miami Beach, please [click here](#).