



I-395/SR 836/I-95 DESIGN-BUILD PROJECT

Financial Project Numbers: 251688-1-52-01, 423126-1-52-01, 423126-2-52-01, 429300-2-52-01

02-08-2023

WEEKLY PROJECT UPDATE

I-95 ONGOING CONSTRUCTION ACTIVITIES

- Pavement replacement activities have been completed from NW 17 Street to NW 29 Street
- Ongoing pavement inspections from NW 17 Street to NW 29 Street
- Nighttime concrete pavement replacement on I-95 from NW 8 Street to NW 17 Street
- Installation of Intelligent Transportation System devices
- Installation of new guardrail
- Traffic railing retrofit on several bridges

I-95 LANE CLOSURES

- **WEDNESDAY, FEBRUARY 8 THROUGH FRIDAY, FEBRUARY 10 AND SUNDAY, FEBRUARY 12 THROUGH FRIDAY, FEBRUARY 17** - Up to four lanes on southbound I-95 from NW 29 Street to NW 8 Street will be closed as needed between the hours of 9 p.m. and 5:30 a.m.
- **WEDNESDAY, FEBRUARY 8 THROUGH FRIDAY, FEBRUARY 10 AND SUNDAY, FEBRUARY 12 THROUGH FRIDAY, FEBRUARY 17** - Up to four lanes on northbound I-95 will be closed as needed from NW 8 Street to NW 29 Street between the hours of 9 p.m. and 5:30 a.m.

NORTHBOUND I-95 RAMP TO EASTBOUND I-395 DETOUR

- **WEDNESDAY, FEBRUARY 8 THROUGH FRIDAY, FEBRUARY 10 AND MONDAY, FEBRUARY 13 THROUGH FRIDAY, FEBRUARY 17** - The northbound I-95 ramp to eastbound I-395 will be closed between the hours of 10 p.m. and 5:30 a.m. Drivers can:
 - Exit at the NW 2 Street ramp (Exit 2B)
 - Continue north on NW 3 Avenue, then turn right on NW 8 Street
 - Continue east on NW/NE 8 Street
 - Turn left on Biscayne Boulevard to access A1A North/Miami Beach

TO VIEW A MAP OF THE DETOUR PLEASE [CLICK HERE](#).

Continue reading on the next page...

SOUTHBOUND I-95 RAMP TO EASTBOUND I-395 DETOUR

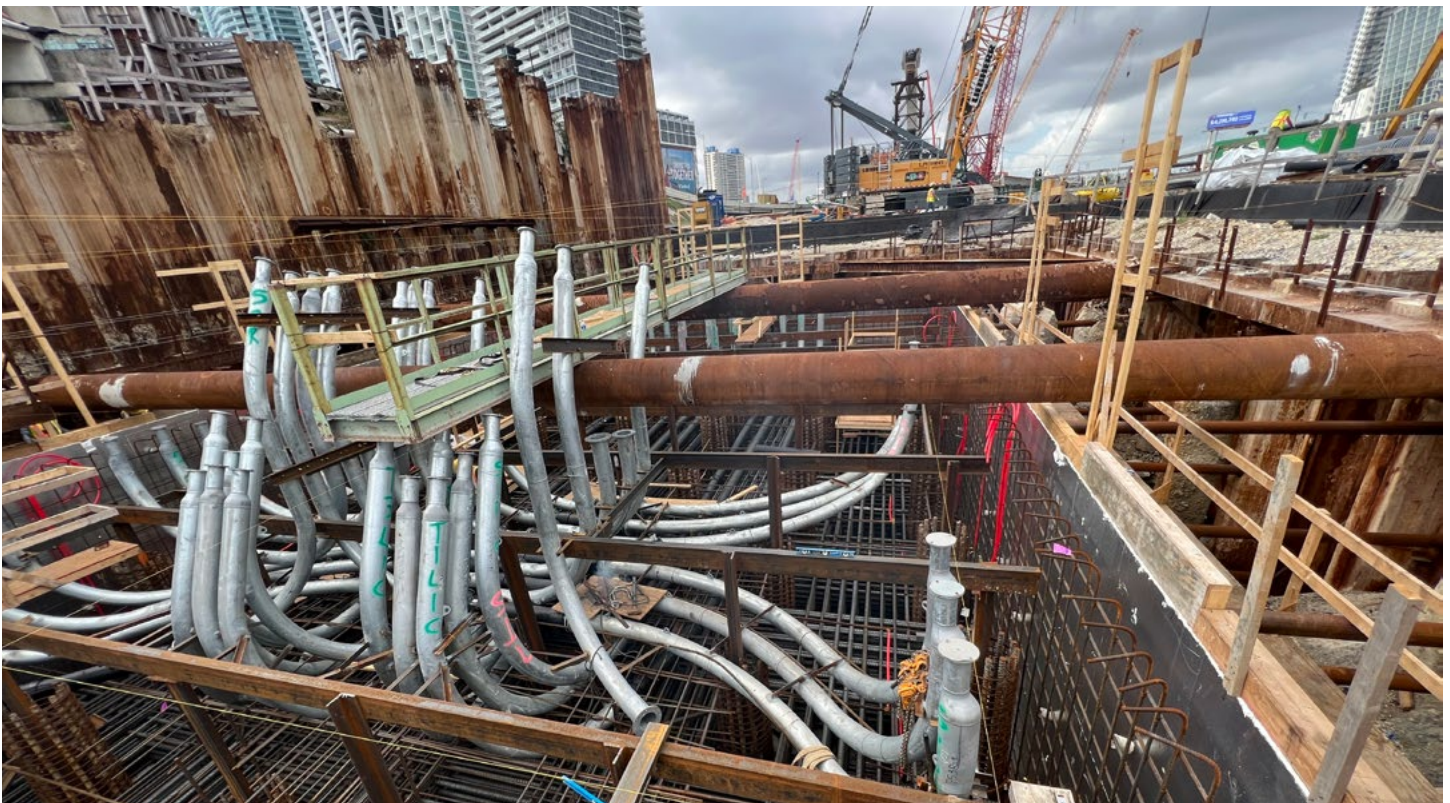
- **WEDNESDAY, FEBRUARY 8 AND THURSDAY, FEBRUARY 9** - The southbound I-95 ramp to eastbound I-395 will be closed between the hours of 10 p.m. and 5:30 a.m. Drivers can:
 - Continue south on I-95, exit at the NW 8 Street ramp (Exit 3B)
 - Turn left on NW 8 Street, continue east on NW 8 Street
 - Turn left at Biscayne Boulevard to access the A1A North/Miami Beach Ram

TO VIEW A MAP OF THE DETOUR PLEASE [CLICK HERE](#).

CLOSURE OF THE NORTHBOUND I-95 RAMP TO I-195 EAST/MIAMI BEACH (EXIT 4A)

- **WEDNESDAY, FEBRUARY 8 THROUGH FRIDAY, FEBRUARY 10 AND SUNDAY, FEBRUARY 12 THROUGH FRIDAY, FEBRUARY 17** - The northbound I-95 ramp to I-195 East/Miami Beach (Exit 4A) will be closed as needed between the hours of 9 p.m. and 5:30 a.m. Drivers can continue north on I-95 to access the I-195 East/Miami Beach ramp (Exit 4B) located north of NW 32 Street.

I-395 ONGOING CONSTRUCTION ACTIVITIES



Ongoing installation of reinforcing steel at one of the signature bridge arch footers

Continue reading on the next page...

- Construction of a temporary westbound and eastbound I-395 bypass from North Miami Avenue to I-95
- Installation of arch segments for the signature bridge
- Nighttime Auger Cast Pile installation for support tower foundations from east of Biscayne Boulevard to NE 1 Avenue between I-395 and NE 13 Street
- Erection of bridge segments between North Miami Avenue and NW 1 Place
- Ongoing work at four of the six signature bridge arches including placement of precast arch segments at arch two located just west of NE 2 Avenue
- Preparation for the next concrete pour at the signature bridge center pier foundation located between Biscayne Boulevard and NE 2 Avenue just north of I-395
- Nighttime roadway operations on I-395 from MacArthur Causeway to I-95

I-395 MAINLINE LANE CLOSURES

- **WEDNESDAY, FEBRUARY 8 THROUGH FRIDAY, FEBRUARY 10 AND SUNDAY, FEBRUARY 12 THROUGH FRIDAY, FEBRUARY 17** - One lane on mainline eastbound I-395 will be closed as needed from I-95 to Biscayne Boulevard between the hours of 10 p.m. and 5:30 a.m.
- **WEDNESDAY, FEBRUARY 8 THROUGH FRIDAY, FEBRUARY 10 AND SUNDAY, FEBRUARY 12 THROUGH FRIDAY, FEBRUARY 17** - Up to two lanes on mainline westbound I-395 will be closed as needed from Biscayne Boulevard to I-95 between the hours of 10 p.m. and 5:30 a.m.

WESTBOUND I-395 RAMP TO NORTHBOUND I-95 DETOUR

- **WEDNESDAY, FEBRUARY 8 THROUGH FRIDAY, FEBRUARY 10 AND SUNDAY, FEBRUARY 12 THROUGH FRIDAY, FEBRUARY 17** - The westbound I-395 ramp to northbound I-95 will be closed as needed between the hours of 10 p.m. and 5:30 a.m. The closures on February 8, 10 and 13 will begin at 11:45 p.m. Drivers can:
 - Access the southbound I-95 ramp
 - Exit at SW 7 Street/Brickell Avenue (Exit 1B), then turn left at SW 8 Street
 - Enter the northbound I-95 ramp, then continue north on I-95

TO VIEW A MAP OF THE DETOUR PLEASE [CLICK HERE.](#)

DAYTIME LANE SHIFT ON THE BISCAYNE BOULEVARD RAMP TO THE MACARTHUR CAUSEWAY

- **WEDNESDAY, FEBRUARY 8 THROUGH FRIDAY, FEBRUARY 10** - The Biscayne Boulevard ramp lane to eastbound MacArthur Causeway will be shifted to the left side of the roadway between the hours of 9 a.m. and 3:30 p.m. to allow the contractor to perform roadway work on the right side of the road.

Continue reading on the next page...

LANE CLOSURES ON BISCAYNE BOULEVARD

- **WEDNESDAY, FEBRUARY 8 THROUGH FRIDAY, FEBRUARY 10 AND MONDAY, FEBRUARY 13 THROUGH FRIDAY, FEBRUARY 17** - One lane on northbound and southbound Biscayne Boulevard will be closed as needed from NE 11 Street to NE 13 Street between the hours of 9 a.m. and 3:30 p.m., and between the hours of 10 p.m. and 5:30 a.m.

CLOSURE OF NW 14 STREET FROM NW 7 AVENUE TO NW 1 AVENUE

- **WEDNESDAY, FEBRUARY 8 THROUGH FRIDAY, FEBRUARY 10 AND MONDAY, FEBRUARY 13 THROUGH FRIDAY, FEBRUARY 17** - NW 14 Street will be closed as needed from NW 7 Avenue to NW 1 Avenue between the hours of 10 p.m. and 5:30 a.m. to allow the contractor to work on segmental bridge construction over the roadway. Drivers can use NW 17 Street as an alternate route.

TO VIEW A MAP OF THE DETOUR PLEASE [CLICK HERE](#).

LONG-TERM CLOSURE OF NW 1 PLACE

- NW 1 Place from NW 13 Street to NW 14 Street will remain continuously closed until further notice to allow the contractor to work on bridges over the roadways.

TO VIEW A MAP OF THE DETOUR PLEASE [CLICK HERE](#)

CLOSURE OF NW 14 TERRACE

- NW 14 Terrace will be closed from NW 3 Avenue to NW 2 Avenue until further notice to allow the contractor to construct bridge foundations. Drivers can use NW 15 Street as an alternate.

LONG-TERM CLOSURE OF NW 1 COURT

- NW 1 Court from NW 13 Street to NW 14 Street and NW 13 Street from NW 1 Avenue to NW 1 Court will remain continuously closed until further notice to allow the contractor to work on bridges over the roadways.

TO VIEW A MAP OF THE DETOUR PLEASE [CLICK HERE](#)

Continue reading on the next page...

SR 836 ONGOING CONSTRUCTION ACTIVITIES



Concrete pile driving for bridge foundations at the core of the SR 836/I-395/I-95 Interchange

Continue reading on the next page...

- Installation of SR 836 bridge pier cap segments and beams for the double decked roadway using the overhead lifter
- Bridge widening activities on eastbound SR 836 over NW 14 Street and NW 10 Avenue
- Construction of trestle bridge in the Miami River east bank between the shoreline and the fendering system
- Drilled shaft foundation construction activities in the Miami River west bank between the shoreline and the fendering system
- Pier construction at the Richard E. Gerstein Justice Building parking area
- Ongoing casting of bridge caps
- Construction of double decked piers at the core of the interchange

SR 836 LANE CLOSURES

- **WEDNESDAY, FEBRUARY 8 THROUGH FRIDAY, FEBRUARY 10 AND SUNDAY, FEBRUARY 12 THROUGH FRIDAY, FEBRUARY 17** - Two eastbound lanes on SR 836 from NW 17 Avenue to I-95 will be closed for bridge work between the hours of 9 p.m. and 5:30 a.m.
- **WEDNESDAY, FEBRUARY 8 THROUGH FRIDAY, FEBRUARY 10 AND SUNDAY, FEBRUARY 12 THROUGH FRIDAY, FEBRUARY 17** - Two westbound lanes on SR 836 from I-95 to NW 17 Avenue will be closed for bridge work between the hours of 9 p.m. and 5:30 a.m.

EASTBOUND SR 836 RAMP TO NORTHBOUND I-95 DETOUR

- **WEDNESDAY, FEBRUARY 8 THROUGH FRIDAY, FEBRUARY 10 AND SUNDAY, FEBRUARY 12 THROUGH FRIDAY, FEBRUARY 17** - The eastbound SR 836 ramp to northbound I-95 will be closed between the hours of 9 p.m. and 5:30 a.m. Drivers can:
 - Access the southbound I-95/NW 8 Street ramp, then exit at the NW 8 Street/PortMiami ramp
 - Turn left at NW 8 Street
 - Turn left at NW 3 Avenue to access the northbound I-95 ramp

TO VIEW A MAP OF THE DETOUR PLEASE [CLICK HERE.](#)

NORTHBOUND NW 12 AVENUE RAMP TO EASTBOUND SR 836 DETOUR

- **THURSDAY, FEBRUARY 9 AND MONDAY, FEBRUARY 13 THROUGH FRIDAY, FEBRUARY 17** - The northbound NW 12 Avenue ramp to eastbound SR 836 will be closed between the hours of 9 p.m. and 5:30 a.m. Drivers can:
 - Continue north on NW 12 Avenue, then turn left on NW 12 Street
 - Turn right on NW 13 Avenue, then turn right on NW 14 Street
 - Turn right on NW 12 Avenue to access the southbound NW 12 Avenue entrance ramp to SR 836 east

TO VIEW A MAP OF THE DETOUR PLEASE [CLICK HERE.](#)

Continue reading on the next page...

FULL CLOSURE OF STATE ROAD (SR) 7/US 441/NW 7 AVENUE

- **WEDNESDAY, FEBRUARY 8, THURSDAY, FEBRUARY 9 AND MONDAY, FEBRUARY 13 THROUGH FRIDAY, FEBRUARY 17** - All lanes on NW 7 Avenue will be closed from NW 14 Street to NW 15 Street between the hours of 10 p.m. and 5:30 a.m.
 - Drivers on northbound NW 7 Avenue can:
 - Turn left on NW 14 Street, then turn right on NW 12 Avenue
 - Turn right on NW 20 Street to connect with NW 7 Avenue
 - Drivers on southbound NW 7 Avenue can:
 - Turn right on NW 20 Street, then turn left on NW 12 Avenue
 - Turn left on NW 14 Street to connect with NW 7 Avenue

TO VIEW A MAP OF THE DETOUR PLEASE [CLICK HERE](#)

FULL CLOSURE OF NW 17 AVENUE

- **WEDNESDAY, FEBRUARY 8** - NW 17 Avenue will be closed between NW 7 Street and the north side of SR 836 between the hours of 11:30 p.m. and 5:30 a.m.
 - Drivers on northbound NW 17 Avenue heading west on SR 836 can:
 - Turn west on NW 7 Street
 - Turn right on NW 27 Avenue to access the SR 836 west entrance ramp
 - Drivers on northbound NW 17 Avenue continuing north can:
 - Turn west on NW 7 Street, then turn right on NW 22 Avenue
 - Turn right on NW 20 Street to connect with NW 17 Avenue
 - Drivers on southbound NW 17 Avenue continuing south can:
 - Turn west on NW 20 Street, then turn left on NW 22 Avenue
 - Turn left on NW 7 Street to connect with NW 17 Avenue

TO VIEW A MAP OF THE DETOUR PLEASE [CLICK HERE](#).

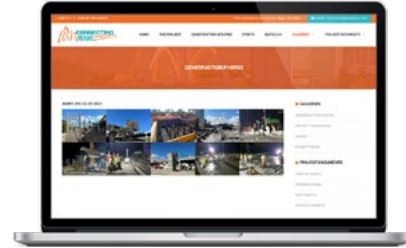
Continue reading on the next page...

ABOUT THE PROJECT

The I-395/SR 836/I-95 Design-Build Project will add capacity, enhance the flow of traffic and safety and improve access along I-395, SR 836 and I-95.



To view a video of the project,
please visit:
i395-miami.com/project-video



To view updated project photos,
please visit:
i395-miami.com/construction-photos

Please note that this schedule may change due to bad weather or other unforeseen conditions.

The work is part of the I-395/SR 836/I-95 Design-Build Project that will reconstruct the I-395 corridor from the SR 836/I-395/I-95 (Midtown) Interchange to the MacArthur Causeway Bridge, including the construction of a Signature Bridge over NE 2 Avenue and Biscayne Boulevard; double-deck SR 836 from west of NW 17 Avenue to the Midtown Interchange and the replacement of the concrete pavement on I-95 from NW 8 Street to NW 29 Street.

For additional information on the project please contact Oscar Gonzalez at 786-280-0983 or via email at ogonzalez@mrgmiami.com. Additional project information can be found on the project website, www.i-395miami.com.

For information on scheduled lane closures on FDOT Construction Projects that affect traffic to/from and in Miami Beach, please [click here](#).