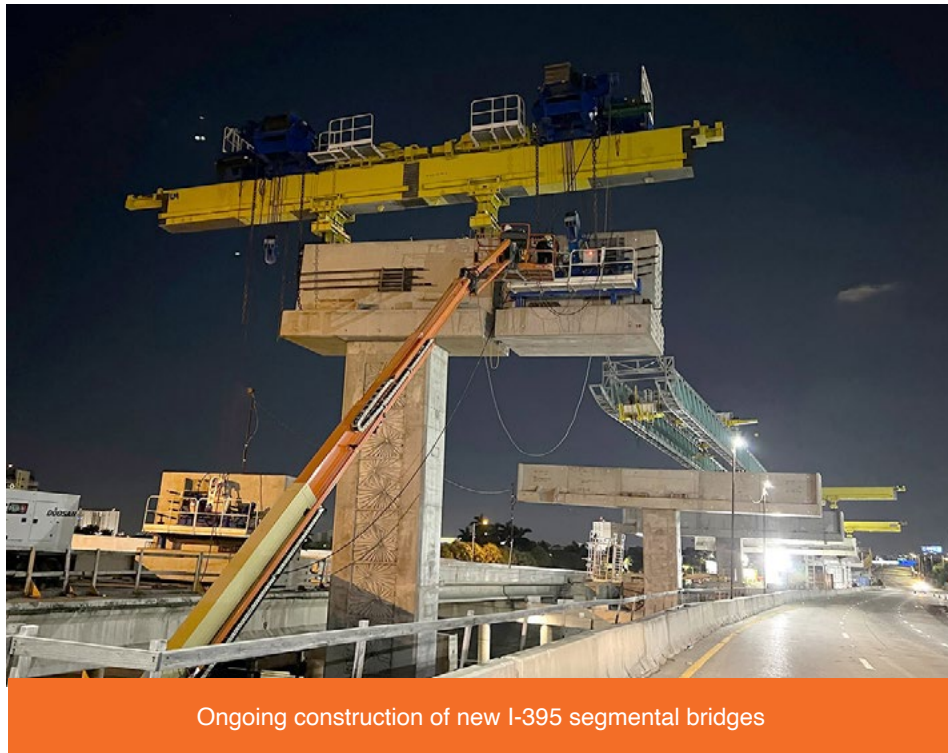


# I-395/SR 836/I-95 DESIGN-BUILD PROJECT

Financial Project Numbers: 251688-1-52-01, 423126-1-52-01, 423126-2-52-01, 429300-2-52-01

09-13-2022

## FULL CLOSURE OF SR 836 FOR PIER CAP INSTALLATION



Ongoing construction of new I-395 segmental bridges

- **WEDNESDAY, SEPTEMBER 14 AND THURSDAY, SEPTEMBER 15** - All eastbound SR 836 lanes will be closed from NW 17 Avenue to NW 12 Avenue between the hours of 11 p.m. and 5:30 a.m.
  - Drivers on eastbound SR 836 can:
    - Exit at the NW 17 Avenue South (Ballpark) ramp, then turn right at NW 17 Avenue
    - Turn left at NW 7 Street
    - Turn left at NW 12 Avenue to connect with eastbound SR 836 ramp

TO VIEW A MAP OF THE DETOUR PLEASE [CLICK HERE](#).

*Continue reading on the next page...*

# NORTHBOUND I-95 RAMP TO EASTBOUND I-395 DETOUR

- **TUESDAY, SEPTEMBER 13** - The northbound I-95 ramp to eastbound I-395 will be closed between the hours of 10 p.m. and 5:30 a.m. Drivers can:
  - Exit at the NW 2 Street ramp (Exit 2B)
  - Continue north on NW 3 Avenue, then turn right on NW 8 Street
  - Continue east on NW/NE 8 Street
  - Turn left on Biscayne Boulevard to access A1A North/Miami Beach

TO VIEW A MAP OF THE DETOUR PLEASE [CLICK HERE](#).

---

## ABOUT THE PROJECT

The I-395/SR 836/I-95 Design-Build Project will add capacity, enhance the flow of traffic and safety and improve access along I-395, SR 836 and I-95.



To view a video of the project,  
please visit:  
[i395-miami.com/project-video](http://i395-miami.com/project-video)



To view updated project photos,  
please visit:  
[i395-miami.com/construction-photos](http://i395-miami.com/construction-photos)

---

*Continue reading on the next page...*

**Please note that this schedule may change due to bad weather or other unforeseen conditions.**

The work is part of the I-395/SR 836/I-95 Design-Build Project that will reconstruct the I-395 corridor from the SR 836/I-395/I-95 (Midtown) Interchange to the MacArthur Causeway Bridge, including the construction of a Signature Bridge over NE 2 Avenue and Biscayne Boulevard; double-deck SR 836 from west of NW 17 Avenue to the Midtown Interchange and the replacement of the concrete pavement on I-95 from NW 8 Street to NW 29 Street.

For additional information on the project please contact Oscar Gonzalez at 786-280-0983 or via email at [ogonzalez@mrgmiami.com](mailto:ogonzalez@mrgmiami.com). Additional project information can be found on the project website, [www.I-395miami.com](http://www.I-395miami.com).

---

For information on scheduled lane closures on FDOT Construction Projects that affect traffic to/from and in Miami Beach, please [click here](#).