



I-395/SR 836/I-95 DESIGN-BUILD PROJECT

Financial Project Numbers: 251688-1-52-01, 423126-1-52-01, 423126-2-52-01, 429300-2-52-01

6/22/22

WEEKLY PROJECT UPDATE

I-95 ONGOING CONSTRUCTION ACTIVITIES

- Nighttime concrete pavement replacement on I-95 from NW 8 Street to NW 29 Street
- Laser profile testing to ensure smooth concrete driving surface
- Nighttime replacement of bridge approach slabs on I-95 from NW 8 Street to NW 29 Street
- Installation of Intelligent Transportation System devices
- Installation of new guardrail
- Bridge foundation work, including concrete pile driving just east of I-95 adjacent to NW 17 Street and under the core of the interchange
- Ongoing concrete grinding operations on I-95

CLOSURE OF THE SOUTHBOUND I-95 RAMP TO EASTBOUND I-395 AND ALL SOUTHBOUND I-95 LANES AT SR 836

- **MONDAY, JUNE 27 THROUGH THURSDAY, JUNE 30** - The southbound I-95 ramp to eastbound I-395 and all southbound I-95 lanes will be closed at SR 836 between the hours of 11:45 p.m. and 5:30 a.m. Drivers can use the detour routes below.
 - Non-Tolled detour route for southbound I-95:
 - Exit at the SR 836 West Ramp, then exit at NW 14 Street
 - Turn left at NW 12 Avenue, then turn left at NW 11 Street
 - Turn right at NW 8 Street Road, then turn left at NW 8 Street
 - Turn right at NW 3 Court to access the I-95 south ramp after NW 2 Street
 - Non-Tolled detour route for eastbound I-395:
 - Exit at the SR 836 West Ramp, then exit at NW 14 Street
 - Turn left at NW 12 Avenue, then turn left at NW 11 Street
 - Turn right at NW 8 Street Road, then turn left at NW 8 Street
 - Continue east on NW 8 Street, then turn left at Biscayne Boulevard to access the A1A North/Miami Beach ramp
 - Tolled detour route for southbound I-95:
 - Exit at the SR 836 West Ramp, then exit at NW 12 Avenue

Continue reading on the next page...

- Turn left at NW 12 Avenue to access the SR 836 east entrance ramp
- Continue east on SR 836 to access the I-95 south ramp
- Tolloed detour route for eastbound I-395:
 - Exit at the SR 836 West Ramp, then exit at NW 12 Avenue
 - Turn left at NW 12 Avenue to access the SR 836 east entrance ramp
 - Continue east on SR 836 to access eastbound I-395

TO VIEW A MAP OF THE DETOUR PLEASE [CLICK HERE](#).

I-95 LANE CLOSURES

- **WEDNESDAY, JUNE 22 THROUGH FRIDAY, JUNE 24 AND SUNDAY, JUNE 26 THROUGH THURSDAY, JUNE 30** - Up to four lanes on southbound I-95 from NW 29 Street to NW 8 Street will be closed between the hours of 9 p.m. and 5:30 a.m. The closures on Fridays will occur between the hours of 11 p.m. and 11 a.m.
- **WEDNESDAY, JUNE 22 THROUGH FRIDAY, JUNE 24 AND SUNDAY, JUNE 26 THROUGH THURSDAY, JUNE 30** - Up to four lanes on northbound I-95 will be closed nightly from NW 8 Street to NW 29 Street between the hours of 9 p.m. and 5:30 a.m. The closures on Fridays will occur between the hours of 11 p.m. and 11 a.m.

DAYTIME CLOSURE OF THE NORTHBOUND I-95 RAMP TO I-195 EAST/MIAMI BEACH (EXIT 4A)

- **WEDNESDAY, JUNE 22 THROUGH FRIDAY, JUNE 24 AND SUNDAY, JUNE 26 THROUGH THURSDAY, JUNE 30** - The northbound I-95 ramp to I-195 East/Miami Beach (Exit 4A) will be closed as needed between the hours of 6 a.m. and 3 p.m. Drivers can continue north on I-95 to access the I-195 East/Miami Beach ramp (Exit 4B) located north of NW 32 Street.

SOUTHBOUND I-95 RAMP TO WESTBOUND SR 836 DETOUR

- **SUNDAY, JUNE 26** - The southbound I-95 ramp to westbound SR 836 will be closed between the hours of 10 p.m. and 5:30 a.m. One lane on the ramp will be closed at 9 p.m. Drivers can:
 - Continue south on I-95
 - Exit at SW 7 Street/Brickell Avenue (Exit 1B), then turn left at SW 8 Street
 - Enter the northbound I-95 ramp, then access the ramp to westbound SR 836

TO VIEW A MAP OF THE DETOUR PLEASE [CLICK HERE](#).

SOUTHBOUND I-95 RAMP TO EASTBOUND I-395 DETOUR

- **MONDAY, JUNE 27 AND TUESDAY, JUNE 28** - The southbound I-95 ramp to eastbound I-395 will be closed between the hours of 10 p.m. and 5:30 a.m. Drivers can:
 - Continue south on I-95, exit at the NW 8 Street ramp (Exit 3B)
 - Turn left on NW 8 Street, continue east on NW 8 Street
 - Turn left at Biscayne Boulevard to access the A1A North/Miami Beach

Continue reading on the next page...

Ramp

TO VIEW A MAP OF THE DETOUR PLEASE [CLICK HERE](#).

NORTHBOUND I-95 RAMP TO EASTBOUND I-395 DETOUR

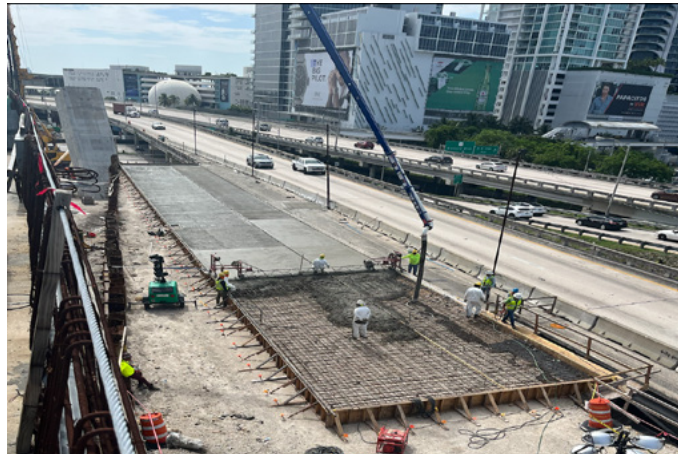
- **MONDAY, JUNE 27 THROUGH WEDNESDAY, JUNE 29** - The northbound I-95 ramp to eastbound I-395 will be closed between the hours of 10 p.m. and 5:30 a.m. Drivers can:
 - Exit at the NW 2 Street ramp (Exit 2B)
 - Continue north on NW 3 Avenue, then turn right on NW 8 Street
 - Continue east on NW/NE 8 Street
 - Turn left on Biscayne Boulevard to access A1A North/Miami Beach

TO VIEW A MAP OF THE DETOUR PLEASE [CLICK HERE](#).

NW 17 STREET DAYTIME LANE CLOSURE UNDER I-95

- **WEDNESDAY, JUNE 22 THROUGH FRIDAY, JUNE 24 AND SUNDAY, JUNE 26 THROUGH FRIDAY, JULY 1** - One travel lane on NW 17 Street under I-95 will be closed as needed between the hours of 9 a.m. and 3:30 p.m. Drivers can use NW 20 Street as an alternate route.

I-395 ONGOING CONSTRUCTION ACTIVITIES



Concrete pavement pour for future westbound I-395 connector to new segmental bridges

- Construction of a temporary westbound I-395 bypass from just west of NE 1 Avenue to North Miami Avenue
- Nighttime Auger Cast Pile installation for support tower foundations from east of Biscayne Boulevard to NE 1 Avenue between I-395 and NE 13 Street
- Nighttime concrete pours for foundations and bridge structures along the I-395 corridor
- Driving steel pipes into the ground adjacent to North Miami Avenue and just north of I-395
- Construction of bridge piers at the Overtown Plaza alleyway between NW 3 Avenue and NW 4

Continue reading on the next page...

Avenue

- Erection of bridge segments between NW 1 Place and NW 3 Avenue
- Foundation construction for signature bridge arch 1 located north of I-395 and just west of NE 2 Avenue
- Removal of concrete molds at arch 2 located north of I-395 and just west of NE 2 Avenue
- Excavation of signature bridge arch 5 east of Biscayne Boulevard adjacent to NE 13 Street
- Hammering/driving of steel pipes and sheets into the ground adjacent to I-395 adjacent to NE 2 Avenue
- Preparation for the next concrete pour at the signature bridge center pier foundation located between Biscayne Boulevard and NE 2 Avenue just north of I-395
- Construction of bridge foundations and piers adjacent to I-395 from North Bayshore Drive to west of NW 3 Avenue
- Placement of bridge segments west from North Miami Avenue to the rail tracks south of I-395
- Construction of new entrance ramp to westbound I-395 just west of North Miami Avenue
- Nighttime roadway operations on I-395 from MacArthur Causeway to I-95

I-395 MAINLINE LANE CLOSURES

- **WEDNESDAY, JUNE 22 THROUGH FRIDAY, JUNE 24 AND SUNDAY, JUNE 26 THROUGH THURSDAY, JUNE 30** - One lane on mainline eastbound I-395 will be closed from I-95 to Biscayne Boulevard between the hours of 10 p.m. and 5:30 a.m.
- **WEDNESDAY, JUNE 22 THROUGH FRIDAY, JUNE 24 AND SUNDAY, JUNE 26 THROUGH THURSDAY, JUNE 30** - Up to two lanes on mainline westbound I-395 will be closed from Biscayne Boulevard to I-95 between the hours of 10 p.m. and 5:30 a.m.

WESTBOUND I-395 RAMP TO NORTHBOUND I-95 DETOUR

- **WEDNESDAY, JUNE 22 THROUGH FRIDAY, JUNE 24 AND MONDAY, JUNE 27 THROUGH THURSDAY, JUNE 30** - The westbound I-395 ramp to northbound I-95 will be closed between the hours of 10 p.m. and 5:30 a.m. The closure on June 15 will begin at 11:45 p.m. Drivers can:
 - Access the southbound I-95 ramp
 - Exit at SW 7 Street/Brickell Avenue (Exit 1B), then turn left at SW 8 Street
 - Enter the northbound I-95 ramp, then continue north on I-95

TO VIEW A MAP OF THE DETOUR PLEASE [CLICK HERE](#).

CLOSURE OF NW 3 AVENUE FOR SEGMENT INSTALLATION

- **MONDAY, JUNE 27 THROUGH THURSDAY, JUNE 30** - NW 3 Avenue will be closed from NW 14 Street to NW 15 Street between the hours of 10 p.m. and 5:30 a.m. to allow the contractor to install bridge segments over the roadway. One northbound lane will be closed as needed between the hours of 9 a.m. and 3:30 p.m.
 - Northbound drivers on NW 3 Avenue can:
 - Turn right on NW 13 Street, then turn left on NW 2 Avenue

Continue reading on the next page...

- Turn right on NW 14 Street, then turn left on NW 1 Avenue
- Turn left on NW 16 Street to connect with NW 3 Avenue
- Southbound drivers on NW 3 Avenue can:
 - Turn left on NW 16 Street, then turn right on NW 2 Avenue
 - Turn left on NW 15 Street, then turn right on NW 1 Avenue
 - Turn left on NW 14 Street, then turn right on North Miami Avenue
 - Turn right on NW 11 Street to connect with NW 3 Avenue

TO VIEW A MAP OF THE DETOUR PLEASE [CLICK HERE](#).

CLOSURE OF NW 14 STREET FROM NW 7 AVENUE TO NW 1 AVENUE

- **MONDAY, JUNE 27 THROUGH THURSDAY, JUNE 30** - NW 14 street will be closed as needed from NW 7 Avenue to NW 1 Avenue between the hours of 10 p.m. and 5:30 a.m. Drivers can use NW 17 Street as an alternate route.

TO VIEW A MAP OF THE DETOUR PLEASE [CLICK HERE](#).

LANE CLOSURES ON NORTH MIAMI AVENUE

- **WEDNESDAY, JUNE 22 THROUGH FRIDAY, JUNE 24 AND MONDAY, JUNE 27 THROUGH THURSDAY, JUNE 30** - One lane on North Miami Avenue will be closed from NE 13 Street to NE 11 Street between the hours of 9 a.m. and 3:30 a.m.

LONG-TERM CLOSURE OF NW 1 PLACE

- NW 1 Place from NW 13 Street to NW 14 Street will remain continuously closed until further notice to allow the contractor to work on bridges over the roadways.

TO VIEW A MAP OF THE DETOUR PLEASE [CLICK HERE](#).

CLOSURE OF NW 14 TERRACE

- NW 14 Terrace will be closed from NW 3 Avenue to NW 2 Avenue until further notice to allow the contractor to construct bridge foundations. Drivers can use NW 15 Street as an alternate.

CLOSURE OF NW 13 STREET AT NW 1 COURT

- A section of NW 13 Street at NW 1 Court will be closed until further notice. The closure will allow the contractor to construct bridge caps for the new I-395 bridges.

TO VIEW A MAP OF THE DETOUR PLEASE [CLICK HERE](#).

LONG-TERM CLOSURE OF NW 1 COURT

- NW 1 Court from NW 13 Street to NW 14 Street and NW 13 Street from NW 1 Avenue to NW 1 Court will remain continuously closed until further notice to allow the contractor to work on bridges over the roadways.

TO VIEW A MAP OF THE DETOUR PLEASE [CLICK HERE](#).

Continue reading on the next page...

SR 836 ONGOING CONSTRUCTION ACTIVITIES



Concrete pour for an SR 836 pier cap

- Ongoing widening activities for the eastbound SR 836 ramp to northbound I-95
- Assembly and installation of the cap/beam lifter in the SR 836 median just west of NW 17 Avenue (NIGHTTIME FULL CLOSURES OF SR 836 WILL BE IMPLEMENTED AS NEEDED)
- Bridge widening activities on eastbound SR 836 over NW 14 Street and NW 10 Avenue
- Construction of trestle bridge in the Miami River south bank between the shoreline and the fendering system
- Foundation construction just west of the Miami River under SR 836 in the Grove Park neighborhood
- Driving steel sheets into the ground adjacent to SR 836 from NW 7 Avenue to NW 17 Avenue
- Pier construction in the median area of SR 836 between NW 17 Avenue and the toll gantry and just east of NW 17 Avenue
- Foundation construction at the Richard E. Gerstein Justice Building parking area
- Foundation construction east of NW 17 Avenue and under SR 836
- Ongoing casting of bridge caps

FULL CLOSURE OF SR 836

- **SUNDAY, JUNE 26 (MONDAY, JUNE 27 IS AN ALTERNATE NIGHT)** - All eastbound and westbound SR 836 lanes will be closed from NW 17 Avenue to NW 12 Avenue between the hours of 11:45 p.m. and 5:30 a.m.
 - Drivers on eastbound SR 836 can:
 - Exit at the NW 17 Avenue South (Ballpark) ramp, then turn right at NW 17 Avenue
 - Turn left at NW 7 Street
 - Turn left at NW 12 Avenue to connect with eastbound SR 836 ramp
 - Drivers on westbound SR 836 can:
 - Exit at the NW 12 Avenue ramp, then turn left on NW 12 Avenue
 - Turn right on NW 7 Street

Continue reading on the next page...

- Turn right on NW 17 Avenue to connect with the westbound SR 836 ramp
TO VIEW A MAP OF THE DETOUR PLEASE [CLICK HERE](#).

SR 836 LANE CLOSURES

- **WEDNESDAY, JUNE 22 THROUGH FRIDAY, JUNE 24 AND MONDAY, JUNE 27 THROUGH THURSDAY, JUNE 30** - Up to two lanes on eastbound SR 836 from NW 17 Avenue to I-95 will be closed as needed between the hours of 9 p.m. and 5:30 a.m.
- **WEDNESDAY, JUNE 22 THROUGH FRIDAY, JUNE 24 AND MONDAY, JUNE 27 THROUGH THURSDAY, JUNE 30** - Up to two westbound lanes on SR 836 from I-95 to NW 17 Avenue will be closed as needed between the hours of 9 p.m. and 5:30 a.m.

EASTBOUND SR 836 RAMP TO NORTHBOUND I-95 DETOUR

- **WEDNESDAY, JUNE 22 THROUGH FRIDAY, JUNE 24 AND MONDAY, JUNE 27 THROUGH THURSDAY, JUNE 30** - The eastbound SR 836 ramp to northbound I-95 will be closed as needed between the hours of 9 p.m. and 5:30 a.m. Drivers can:
 - Access the southbound I-95/NW 8 Street ramp, then exit at the NW 8 Street/PortMiami ramp
 - Turn left at NW 8 Street
 - Turn left at NW 3 Avenue to access the northbound I-95 ramp

TO VIEW A MAP OF THE DETOUR PLEASE [CLICK HERE](#).

EASTBOUND SR 836 RAMP TO SOUTHBOUND I-95 DETOUR

- **WEDNESDAY, JUNE 22 THROUGH FRIDAY, JUNE 24 AND MONDAY, JUNE 27 THROUGH THURSDAY, JUNE 30** - One lane on the eastbound SR 836 ramp to southbound I-95 will be closed as needed between the hours of 10 p.m. and 5:30 a.m.

NORTHBOUND NW 12 AVENUE RAMP TO EASTBOUND SR 836 DETOUR

- **WEDNESDAY, JUNE 22, THURSDAY, JUNE 23 AND THURSDAY, JUNE 30** - The northbound NW 12 Avenue ramp to eastbound SR 836 will be closed between the hours of 9 p.m. and 5:30 a.m. Drivers can:
 - Continue north on NW 12 Avenue, then turn left on NW 12 Street
 - Turn right on NW 13 Avenue, then turn right on NW 14 Street
 - Turn right on NW 12 Avenue to access the southbound NW 12 Avenue entrance ramp to SR 836 east

TO VIEW A MAP OF THE DETOUR PLEASE [CLICK HERE](#).

Continue reading on the next page...

DAYTIME NW 7 AVENUE LANE CLOSURES

- **WEDNESDAY, JUNE 22 THROUGH FRIDAY, JUNE 24 AND MONDAY, JUNE 27 THROUGH THURSDAY, JUNE 30** - One southbound lane on NW 7 Avenue will be closed as needed from NW 15 Street to NW 14 Street between the hours of 9 a.m. and 3:30 p.m.

NW 14 STREET CLOSURE

- **WEDNESDAY, JUNE 22 THROUGH FRIDAY, JUNE 24 AND MONDAY, JUNE 27 THROUGH THURSDAY, JUNE 30** - NW 14 Street will be closed as needed from NW 7 Avenue to NW 10 Avenue between the hours of 9 p.m. and 5:30 a.m.
 - Drivers on westbound NW 14 Street can:
 - Turn right on NW 7 Avenue, then turn left on NW 17 Street
 - Turn left on NW 9 Avenue and follow NW 10 Avenue to connect with NW 14 Street
 - Drivers on eastbound NW 14 Street can:
 - Turn left on NW 10 Avenue and follow NW 9 Avenue, then turn right on NW 17 Street
 - Turn right on NW 7 Avenue to connect with NW 14 Street

TO VIEW A MAP OF THE DETOUR PLEASE [CLICK HERE](#).

NIGHTTIME CLOSURES OF NW 15 AVENUE AND NW SOUTH RIVER DRIVE UNDER SR 836 FOR BRIDGE WORK

- **WEDNESDAY, JUNE 22 THROUGH FRIDAY, JUNE 24 AND MONDAY, JUNE 27 THROUGH THURSDAY, JUNE 30** - NW 15 Avenue and NW South River Drive will be closed as needed under SR 836 between the hours of 9 p.m. and 5:30 a.m. Closures will also be implemented as needed from 9 a.m. to 3:30 p.m.

TO VIEW A MAP OF THE DETOUR PLEASE [CLICK HERE](#).

LANE CLOSURES ON NW NORTH RIVER DRIVE/NW 11 STREET

- **WEDNESDAY, JUNE 22 THROUGH FRIDAY, JUNE 24 AND SUNDAY, JUNE 26 THROUGH THURSDAY, JUNE 30** - One southbound travel lane on NW North River Drive/NW 11 Street will be closed as needed between the hours of 8 a.m. and 3:30 p.m.

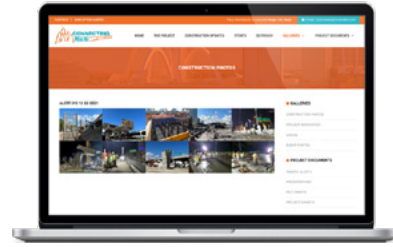
Continue reading on the next page...

ABOUT THE PROJECT

The I-395/SR 836/I-95 Design-Build Project will add capacity, enhance the flow of traffic and safety and improve access along I-395, SR 836 and I-95.



To view a video of the project,
please visit:
i395-miami.com/project-video



To view updated project photos,
please visit:
www.i395-miami.com/construction-photos

Please note that this schedule may change due to bad weather or other unforeseen conditions.

The work is part of the I-395/SR 836/I-95 Design-Build Project that will reconstruct the I-395 corridor from the SR 836/I-395/I-95 (Midtown) Interchange to the MacArthur Causeway Bridge, including the construction of a Signature Bridge over NE 2 Avenue and Biscayne Boulevard; double-deck SR 836 from west of NW 17 Avenue to the Midtown Interchange and the replacement of the concrete pavement on I-95 from NW 8 Street to NW 29 Street.

For additional information on the test pile work or the project please contact Oscar Gonzalez at 786-280-0983 or via email at ogonzalez@mrgmiami.com. Additional project information can be found on the project website, www.I-395miami.com.

For information on scheduled lane closures on FDOT Construction Projects that affect traffic to/from and in Miami Beach, please [click here](#).