



I-395/SR 836/I-95 DESIGN-BUILD PROJECT

Financial Project Numbers: 251688-1-52-01, 423126-1-52-01, 423126-2-52-01, 429300-2-52-01

5/18/22

WEEKLY PROJECT UPDATE

I-95 ONGOING CONSTRUCTION ACTIVITIES

- Nighttime concrete pavement replacement on I-95 from NW 8 Street to NW 29 Street
- Laser profile testing to ensure smooth concrete driving surface
- Nighttime replacement of bridge approach slabs on I-95 from NW 8 Street to NW 29 Street
- Installation of Intelligent Transportation System devices
- Installation of new guardrail
- Bridge foundation work, including concrete pile driving just east of I-95 adjacent to NW 17 Street and under the core of the interchange
- Ongoing concrete grinding operations on I-95

CLOSURE OF THE SOUTHBOUND I-95 RAMP TO EASTBOUND I-395 AND ALL SOUTHBOUND I-95 LANES AT SR 836

- **WEDNESDAY, MAY 18** - The southbound I-95 ramp to eastbound I-395 will be closed between the hours of 10 p.m. and 5:30 a.m., and all southbound I-95 lanes will be closed at SR 836 between the hours of 11:45 p.m. and 5:30 a.m. Drivers can use the detour routes below.
 - Non-Tolled detour route for southbound I-95:
 - Exit at the SR 836 West Ramp, then exit at NW 14 Street
 - Turn left at NW 12 Avenue, then turn left at NW 11 Street
 - Turn right at NW 8 Street Road, then turn left at NW 8 Street
 - Turn right at NW 3 Court to access the I-95 south ramp after NW 2 Street
 - Non-Tolled detour route for eastbound I-395:
 - Exit at the SR 836 West Ramp, then exit at NW 14 Street
 - Turn left at NW 12 Avenue, then turn left at NW 11 Street
 - Turn right at NW 8 Street Road, then turn left at NW 8 Street
 - Continue east on NW 8 Street, then turn left at Biscayne Boulevard to access the A1A North/Miami Beach ramp
 - Tolled detour route for southbound I-95:
 - Exit at the SR 836 West Ramp, then exit at NW 12 Avenue

Continue reading on the next page...

- Turn left at NW 12 Avenue to access the SR 836 east entrance ramp
- Continue east on SR 836 to access the I-95 south ramp
- Tolloed detour route for eastbound I-395:
 - Exit at the SR 836 West Ramp, then exit at NW 12 Avenue
 - Turn left at NW 12 Avenue to access the SR 836 east entrance ramp
 - Continue east on SR 836 to access eastbound I-395

TO VIEW A MAP OF THE DETOUR PLEASE [CLICK HERE](#).

I-95 LANE CLOSURES

- **WEDNESDAY, MAY 18 THROUGH FRIDAY, MAY 20 AND SUNDAY, MAY 22 THROUGH THURSDAY, MAY 26** - Up to four lanes on southbound I-95 from NW 29 Street to NW 8 Street will be closed between the hours of 9 p.m. and 5:30 a.m. The closures on Fridays will occur between the hours of 11 p.m. and 11 a.m.
- **WEDNESDAY, MAY 18 THROUGH FRIDAY, MAY 20 AND SUNDAY, MAY 22 THROUGH THURSDAY, MAY 26** - Up to four lanes on northbound I-95 will be closed nightly from NW 8 Street to NW 29 Street between the hours of 9 p.m. and 5:30 a.m. The closures on Fridays will occur between the hours of 11 p.m. and 11 a.m.

SOUTHBOUND I-95 RAMP TO WESTBOUND 836 DETOUR

- **THURSDAY, MAY 19** - The southbound I-95 ramp to westbound SR 836 will be closed between the hours of 11:45 p.m. and 5:30 a.m. One lane on the ramp will be closed at 10 p.m. Drivers can:
 - Continue south on I-95
 - Exit at SW 7 Street/Brickell Avenue (Exit 1B), then turn left at SW 8 Street
 - Enter the northbound I-95 ramp, then access the ramp to westbound SR 836

TO VIEW A MAP OF THE DETOUR PLEASE [CLICK HERE](#).

SOUTHBOUND 95 EXPRESS CLOSURE

- **SUNDAY, MAY 22 THROUGH THURSDAY, MAY 26** - All southbound 95 Express Lanes will be closed from the Golden Glades Interchange to SR 112 between the hours of 9 p.m. and 5:30 a.m.

EASTBOUND SR 112 AND WESTBOUND I-195 RAMP TO SOUTHBOUND I-95

- **WEDNESDAY, MAY 18 AND THURSDAY, MAY 19** - The eastbound SR 112 and westbound I-195 ramps to southbound I-95 will be closed as needed between the hours of 10 p.m. and 5:30 a.m. Drivers can:
 - Continue north on I-95 and exit at NW 62 Street
 - Turn left at NW 62 Street to access the southbound I-95 ramp

TO VIEW A MAP OF THE DETOUR PLEASE [CLICK HERE](#).

Continue reading on the next page...

CLOSURE OF THE NORTHBOUND I-95 RAMP TO I-195 EAST/ MIAMI BEACH (EXIT 4A)

- **MONDAY, MAY 23 THROUGH WEDNESDAY, MAY 25** - The northbound I-95 ramp to I-195 East/Miami Beach (Exit 4A) will be closed as needed between the hours of 9 p.m. and 5:30 a.m. Drivers can continue north on I-95 to access the I-195 East/Miami Beach ramp (Exit 4B) located north of NW 32 Street.

SOUTHBOUND I-95 RAMP TO EASTBOUND I-395 DETOUR

- **WEDNESDAY, MAY 18** - The southbound I-95 ramp to eastbound I-395 will be closed between the hours of 10 p.m. and 5:30 a.m. Drivers can:
 - Continue south on I-95, exit at the NW 8 Street ramp (Exit 3B)
 - Turn left on NW 8 Street, continue east on NW 8 Street
 - Turn left at Biscayne Boulevard to access the A1A North/Miami Beach RampTO VIEW A MAP OF THE DETOUR PLEASE [CLICK HERE](#).

NORTHBOUND I-95 RAMP TO EASTBOUND I-395 DETOUR

- **THURSDAY, MAY 19** - The northbound I-95 ramp to eastbound I-395 will be closed between the hours of 10 p.m. and 5:30 a.m. Drivers can:
 - Exit at the NW 2 Street ramp (Exit 2B)
 - Continue north on NW 3 Avenue, then turn right on NW 8 Street
 - Continue east on NW/NE 8 Street
 - Turn left on Biscayne Boulevard to access A1A North/Miami BeachTO VIEW A MAP OF THE DETOUR PLEASE [CLICK HERE](#).

NW 17 STREET DAYTIME LANE CLOSURE UNDER I-95

- **WEDNESDAY, MAY 18 THROUGH FRIDAY, MAY 20 AND SUNDAY, MAY 22 THROUGH THURSDAY, MAY 26** - One travel lane on NW 17 Street under I-95 will be closed as needed between the hours of 9 a.m. and 3:30 p.m. Drivers can use NW 20 Street as an alternate route.

I-395 ONGOING CONSTRUCTION ACTIVITIES



Crews installing drainage structures at future approach to the westbound I-395 entrance ramp at North Miami Avenue

Continue reading on the next page...

- Construction of a temporary westbound I-395 bypass from just west of NE 1 Avenue to North Miami Avenue
- Nighttime Auger Cast Pile installation for support tower foundations from east of Biscayne Boulevard to NE 1 Avenue between I-395 and NE 13 Street
- Driving steel pipes into the ground adjacent to North Miami Avenue and just north of I-395
- Construction of bridge piers at the Overtown Plaza alleyway between NW 3 Avenue and NW 4 Avenue
- Erection of bridge segments between NW 1 Place and NW 3 Avenue
- Foundation construction for signature bridge arch 1 located north of I-395 and just west of NE 2 Avenue
- Removal of concrete molds at arch 2 located north of I-395 and just west of NE 2 Avenue
- Excavation of signature bridge arch 5 east of Biscayne Boulevard adjacent to NE 13 Street
- Hammering/driving of steel pipes and sheets into the ground adjacent to I-395 adjacent to NE 2 Avenue
- Preparation for the next concrete pour at the signature bridge center pier foundation located between Biscayne Boulevard and NE 2 Avenue just north of I-395
- Construction of bridge foundations and piers adjacent to I-395 from North Bayshore Drive to west of NW 3 Avenue
- Placement of bridge segments west from North Miami Avenue to the rail tracks south of I-395
- Construction of new entrance ramp to westbound I-395 just west of North Miami Avenue
- Nighttime roadway operations on I-395 from MacArthur Causeway to I-95

I-395 MAINLINE LANE CLOSURES

- **WEDNESDAY, MAY 18 THROUGH FRIDAY, MAY 20 AND SUNDAY, MAY 22 THROUGH THURSDAY, MAY 26** - One lane on mainline eastbound I-395 will be closed from I-95 to Biscayne Boulevard between the hours of 10 p.m. and 5:30 a.m.
- **WEDNESDAY, MAY 18 THROUGH FRIDAY, MAY 20 AND SUNDAY, MAY 22 THROUGH THURSDAY, MAY 26** - Up to two lanes on mainline westbound I-395 will be closed from Biscayne Boulevard to I-95 between the hours of 10 p.m. and 5:30 a.m.

WESTBOUND I-395 RAMP TO NORTHBOUND I-95 DETOUR

- **WEDNESDAY, MAY 18 AND SUNDAY, MAY 22 THROUGH THURSDAY, MAY 26** - The westbound I-395 ramp to northbound I-95 will be closed between the hours of 10 p.m. and 5:30 a.m. Drivers can:
 - Access the southbound I-95 ramp
 - Exit at SW 7 Street/Brickell Avenue (Exit 1B), then turn left at SW 8 Street
 - Enter the northbound I-95 ramp, then continue north on I-95

TO VIEW A MAP OF THE DETOUR PLEASE [CLICK HERE](#).

Continue reading on the next page...

NIGHTTIME NE 1 AVENUE DETOUR

- **MONDAY, MAY 23 AND TUESDAY, MAY 24** - NE 1 Avenue will be closed from NE 13 Street to I-395 between the hours of 10 p.m. and 5:30 a.m. to allow the contractor to clean out drainage pipes.
 - Drivers north of I-395 can:
 - Go west on NE 14 Street, turn left on North Miami Avenue
 - Turn left on NE 10 Street to connect with NE 1 Avenue
 - Drivers south of I-395 can:
 - Turn left on NW 13 Street to connect with NE 1 Avenue
 - Turn right on NE 10 Street, then turn left on Biscayne Boulevard

TO VIEW A MAP OF THE DETOUR PLEASE [CLICK HERE](#).

CLOSURE OF NW 3 AVENUE FOR SEGMENT INSTALLATION

- **WEDNESDAY, MAY 18 THROUGH FRIDAY, MAY 20 AND SUNDAY, MAY 22 THROUGH THURSDAY, MAY 26** - NW 3 Avenue will be closed from NW 14 Street to NW 15 Street between the hours of 10 p.m. and 5:30 a.m. to allow the contractor to install bridge segments over the roadway. One northbound lane will be closed as needed between the hours of 9 a.m. and 3:30 p.m.
 - Northbound drivers on NW 3 Avenue can:
 - Turn right on NW 13 Street, then turn left on NW 2 Avenue
 - Turn right on NW 14 Street, then turn left on NW 1 Avenue
 - Turn left on NW 16 Street to connect with NW 3 Avenue
 - Southbound drivers on NW 3 Avenue can:
 - Turn left on NW 16 Street, then turn right on NW 2 Avenue
 - Turn left on NW 15 Street, then turn right on NW 1 Avenue
 - Turn left on NW 14 Street, then turn right on North Miami Avenue
 - Turn right on NW 11 Street to connect with NW 3 Avenue

TO VIEW A MAP OF THE DETOUR PLEASE [CLICK HERE](#).

LONG-TERM CLOSURE OF NW 1 PLACE

- NW 1 Place from NW 13 Street to NW 14 Street will remain continuously closed until further notice to allow the contractor to work on bridges over the roadways.

TO VIEW A MAP OF THE DETOUR PLEASE [CLICK HERE](#).

CLOSURE OF NW 14 TERRACE

- NW 14 Terrace will be closed from NW 3 Avenue to NW 2 Avenue until further notice to allow the contractor to construct bridge foundations. Drivers can use NW 15 Street as an alternate.

Continue reading on the next page...

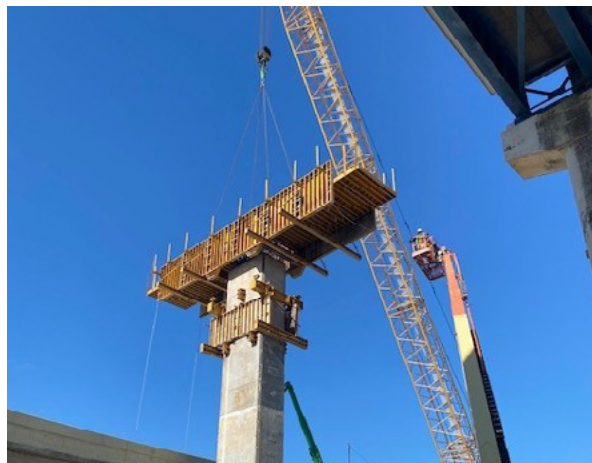
CLOSURE OF NW 13 STREET AT NW 1 COURT

- A section of NW 13 Street at NW 1 Court will be closed until further notice. The closure will allow the contractor to construct bridge caps for the new I-395 bridges.
TO VIEW A MAP OF THE DETOUR PLEASE [CLICK HERE](#).

LONG-TERM CLOSURE OF NW 1 COURT

- NW 1 Court from NW 13 Street to NW 14 Street and NW 13 Street from NW 1 Avenue to NW 1 Court will remain continuously closed until further notice to allow the contractor to work on bridges over the roadways.
TO VIEW A MAP OF THE DETOUR PLEASE [CLICK HERE](#).

SR 836 ONGOING CONSTRUCTION ACTIVITIES



Installation of concrete pier cap form to support the new SR 836 double-decked section

- Ongoing widening activities for the eastbound SR 836 ramp to northbound I-95
- Assembly and installation of the cap/beam lifter in the SR 836 median just west of NW 17 Avenue (**NIGHTTIME FULL CLOSURES OF SR 836 WILL BE IMPLEMENTED AS NEEDED**)
- Bridge widening activities on eastbound SR 836 over NW 14 Street and NW 10 Avenue
- Foundation construction just west of the Miami River under SR 836 in the Grove Park neighborhood
- Driving steel sheets into the ground adjacent to SR 836 from NW 7 Avenue to NW 17 Avenue
- Pier construction in the median area of SR 836 between NW 17 Avenue and the toll gantry and just east of NW 17 Avenue
- Foundation construction at the Richard E. Gerstein Justice Building parking area
- Foundation construction east of NW 17 Avenue and under SR 836
- Ongoing casting of bridge caps

Continue reading on the next page...

SR 836 LANE CLOSURES

- **WEDNESDAY, MAY 18 THROUGH FRIDAY, MAY 20 AND MONDAY, MAY 23 THROUGH THURSDAY, MAY 26** - Up to two lanes on eastbound SR 836 from NW 17 Avenue to I-95 will be closed as needed between the hours of 9 p.m. and 5:30 a.m.
- **WEDNESDAY, MAY 18 THROUGH FRIDAY, MAY 20 AND MONDAY, MAY 23 THROUGH THURSDAY, MAY 26** - Up to two westbound lanes on SR 836 from I-95 to NW 17 Avenue will be closed as needed between the hours of 9 p.m. and 5:30 a.m.

EASTBOUND SR 836 RAMP TO NORTHBOUND I-95 DETOUR

- **WEDNESDAY, MAY 18 THROUGH FRIDAY, MAY 20 AND MONDAY, MAY 23 THROUGH THURSDAY, MAY 26** - The eastbound SR 836 ramp to northbound I-95 will be closed between the hours of 9 p.m. and 5:30 a.m. Drivers can:
 - Access the southbound I-95/NW 8 Street ramp, then exit at the NW 8 Street/PortMiami ramp
 - Turn left at NW 8 Street
 - Turn left at NW 3 Avenue to access the northbound I-95 ramp

TO VIEW A MAP OF THE DETOUR PLEASE [CLICK HERE](#).

NW 14 STREET CLOSURE

- **WEDNESDAY, MAY 18 AND MONDAY, MAY 23 THROUGH THURSDAY, MAY 26** - NW 14 Street will be closed as needed from NW 7 Avenue to NW 10 Avenue between the hours of 9 p.m. and 5:30 a.m.
 - Drivers on westbound NW 14 Street can:
 - Turn right on NW 7 Avenue, then turn left on NW 17 Street
 - Turn left on NW 9 Avenue and follow NW 10 Avenue to connect with NW 14 Street
 - Drivers on eastbound NW 14 Street can:
 - Turn left on NW 10 Avenue and follow NW 9 Avenue, then turn right on NW 17 Street
 - Turn right on NW 7 Avenue to connect with NW 14 Street

TO VIEW A MAP OF THE DETOUR PLEASE [CLICK HERE](#).

Continue reading on the next page...

NIGHTTIME CLOSURES OF NW 15 AVENUE AND NW SOUTH RIVER DRIVE UNDER SR 836 FOR BRIDGE WORK

- **WEDNESDAY, MAY 18 THROUGH FRIDAY, MAY 20 AND MONDAY, MAY 23 THROUGH THURSDAY, MAY 26** - NW 15 Avenue and NW South River Drive will be closed as needed under SR 836 between the hours of 9 p.m. and 5:30 a.m.
TO VIEW A MAP OF THE DETOUR PLEASE [CLICK HERE](#).

LANE CLOSURES ON NW NORTH RIVER DRIVE/NW 11 STREET

- **WEDNESDAY, MAY 18 THROUGH FRIDAY, MAY 20 AND MONDAY, MAY 23 THROUGH THURSDAY, MAY 26** - One southbound travel lane on NW North River Drive/NW 11 Street will be closed as needed between the hours of 9 a.m. and 3:30 p.m.

Continue reading on the next page...

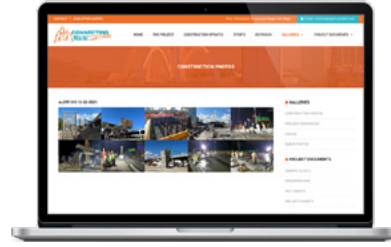
ABOUT THE PROJECT

The I-395/SR 836/I-95 Design-Build Project will add capacity, enhance the flow of traffic and safety and improve access along I-395, SR 836 and I-95.



To view a video of the project,
please visit:

i395-miami.com/project-video



To view updated project photos,
please visit:

www.i395-miami.com/construction-photos

Please note that this schedule may change due to bad weather or other unforeseen conditions.

The work is part of the I-395/SR 836/I-95 Design-Build Project that will reconstruct the I-395 corridor from the SR 836/I-395/I-95 (Midtown) Interchange to the MacArthur Causeway Bridge, including the construction of a Signature Bridge over NE 2 Avenue and Biscayne Boulevard; double-deck SR 836 from west of NW 17 Avenue to the Midtown Interchange and the replacement of the concrete pavement on I-95 from NW 8 Street to NW 29 Street.

For additional information on the test pile work or the project please contact Oscar Gonzalez at 786-280-0983 or via email at ogonzalez@mrgmiami.com. Additional project information can be found on the project website, www.I-395miami.com.

For information on scheduled lane closures on FDOT Construction Projects that affect traffic to/from and in Miami Beach, please [click here](#).