



# I-395/SR 836/I-95 DESIGN-BUILD PROJECT

Financial Project Numbers: 251688-1-52-01, 423126-1-52-01, 423126-2-52-01, 429300-2-52-01

12-8-2021

## WEEKLY PROJECT UPDATE

### I-95 ONGOING CONSTRUCTION ACTIVITIES

- Nighttime concrete pavement replacement on I-95 from NW 8 Street to NW 29 Street
- Laser profile testing to ensure smooth concrete driving surface
- Nighttime replacement of bridge approach slabs on I-95 from NW 8 Street to NW 29 Street
- Installation of Intelligent Transportation System devices
- Installation of new guardrail
- Bridge foundation work, including concrete pile driving just east of I-95 adjacent to NW 17 Street and under the core of the interchange
- Ongoing concrete grinding operations on I-95

### I-95 LANE CLOSURES

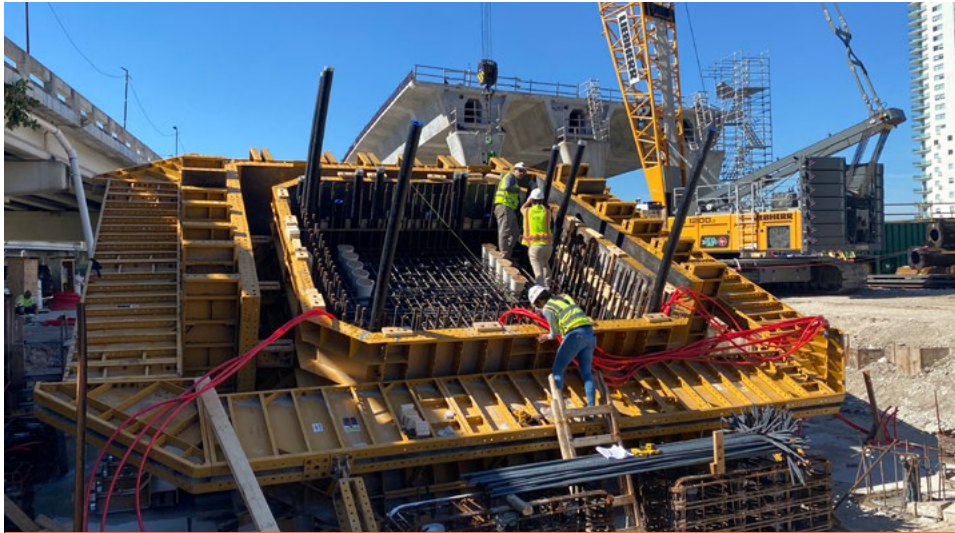
- **WEDNESDAY, DECEMBER 8 THROUGH FRIDAY, DECEMBER 10 AND SUNDAY, DECEMBER 12 THROUGH THURSDAY, DECEMBER 16** - Up to four lanes on southbound I-95 from NW 29 Street to NW 8 Street will be closed between the hours of 9 p.m. and 5:30 a.m. The closure on Friday will occur between the hours of 11 p.m. and 11 a.m.
- **WEDNESDAY, DECEMBER 8 THROUGH FRIDAY, DECEMBER 10 AND SUNDAY, DECEMBER 12 THROUGH THURSDAY, DECEMBER 16** - Up to four lanes on northbound I-95 will be closed nightly from NW 8 Street to NW 29 Street between the hours of 9 p.m. and 5:30 a.m. The closure on Friday will occur between the hours of 11 p.m. and 11 a.m.

### NW 17 STREET DAYTIME CLOSURES UNDER I-95

- **WEDNESDAY, DECEMBER 8 THROUGH FRIDAY, DECEMBER 10 AND SUNDAY, DECEMBER 12 THROUGH THURSDAY, DECEMBER 16** - One lane on westbound NW 17 Street under I-95 will be closed as needed between the hours of 7 a.m. and 4 p.m. Traffic will be flagged around the work zone.

*Continue reading on the next page...*

## I-395 ONGOING CONSTRUCTION ACTIVITIES



Preparation of one of the six arch pedestals for the concrete pour

- Construction of a temporary westbound I-395 bypass from just west of NE 1 Avenue to North Miami Avenue
- Driving concrete piles into the ground adjacent to NW 14 Street between NW 3 Avenue and NW 7 Avenue
- Installation of a temporary westbound I-395 bypass bridge over NE 1 Avenue
- Construction of bridge foundations at the Overtown Plaza alleyway between NW 3 Avenue and NW 4 Avenue
- Erection of the I-395 bridge segments just west of NW 1 Avenue and south of NW 14 Street
- Erection of bridge segments over the intersection of NW 14 Street and NW 1 Place
- Foundation construction for signature bridge arches 1 and 2 located north of I-395 and just west of NE 2 Avenue
- Excavation of signature bridge arch 4 east of Biscayne Boulevard adjacent to NE 13 Street
- Hammering/driving of steel pipes and sheets into the ground along the I-395 corridor
- Driving concrete piles into the ground adjacent to NW 14 Street between NW 7 Avenue and NW 3 Avenue
- Construction of the arch pier legs at the signature bridge center pier foundation located between Biscayne Boulevard and NE 2 Avenue just north of I-395
- Construction of bridge foundations and piers adjacent to I-395 from North Bayshore Drive to west of NW 3 Avenue
- Placement of bridge segments west of NW 1 Court south of NW 14 Street
- Construction of new entrance ramp to westbound I-395 just west of North Miami Avenue
- Removal of the westbound I-395 ramp to northbound I-95 to construct the new ramp
- Nighttime roadway operations on I-395 from MacArthur Causeway to I-95

*Continue reading on the next page...*

## I-395 MAINLINE LANE CLOSURES

- **WEDNESDAY, DECEMBER 8 THROUGH FRIDAY, DECEMBER 10 AND SUNDAY, DECEMBER 12 THROUGH THURSDAY, DECEMBER 16** - One lane on mainline eastbound I-395 will be closed from I-95 to Biscayne Boulevard between the hours of 10 p.m. and 5:30 a.m.
- **WEDNESDAY, DECEMBER 8 THROUGH FRIDAY, DECEMBER 10 AND SUNDAY, DECEMBER 12 THROUGH THURSDAY, DECEMBER 16** - Up to two lanes on mainline westbound I-395 will be closed from Biscayne Boulevard to I-95 between the hours of 10 p.m. and 5:30 a.m.

## WESTBOUND MACARTHUR CAUSEWAY RAMP TO BISCAYNE BOULEVARD

- **WEDNESDAY, DECEMBER 8 THROUGH FRIDAY, DECEMBER 10 AND SUNDAY, DECEMBER 12 THROUGH THURSDAY, DECEMBER 16** - The westbound MacArthur Causeway ramp to Biscayne Boulevard will be closed between the hours of 10 p.m. and 5:30 a.m. Drivers can:
  - Continue west on I-395, then access the southbound I-95 ramp
  - Exit at SW 7 Street/Brickell Avenue (Exit 1B), then turn left at SW 8 Street
  - Enter the northbound I-95 ramp, then continue north on I-95 from the right lane
  - Enter the eastbound I-395 ramp and exit at the Biscayne Boulevard/Arena ramp (Exit 2B)

TO VIEW A MAP OF THE DETOUR PLEASE [CLICK HERE.](#)

## CLOSURE OF NW 14 STREET FROM NW 3 AVENUE TO NW 7 AVENUE

- **WEDNESDAY, DECEMBER 8 THROUGH FRIDAY, DECEMBER 10 AND SUNDAY, DECEMBER 12 THROUGH THURSDAY, DECEMBER 16** - NW 14 Street will be closed from NW 3 Avenue to NW 7 Avenue between the hours of 9 p.m. and 5:30 a.m.
- **SATURDAY, DECEMBER 11** - NW 14 Street will be closed from NW 3 Avenue to NW 7 Avenue between the hours of 8 a.m. and 3:30 p.m.

DRIVERS CAN USE NW 17 STREET AS AN ALTERNATE ROUTE. [CLICK HERE](#) FOR A DETOUR MAP.

*Continue reading on the next page...*

## CLOSURE OF NW 14 STREET FOR BRIDGE SEGMENT INSTALLATION

- **WEDNESDAY, DECEMBER 8 THROUGH FRIDAY, DECEMBER 10 AND MONDAY, DECEMBER 13 THROUGH THURSDAY, DECEMBER 16** - NW 14 street will be closed as needed from NW 3 Avenue to NW 1 Place between the hours of 10 p.m. and 5:30 a.m. Drivers should follow the posted detour route.

## NORTH MIAMI AVENUE LANE CLOSURE

- **WEDNESDAY, DECEMBER 8 THROUGH FRIDAY, DECEMBER 10 AND SUNDAY, DECEMBER 12 THROUGH THURSDAY, DECEMBER 16** - One lane on North Miami Avenue will be closed from NW 13 Street to I-395 between the hours 9 a.m. and 3:30 p.m.

## CLOSURE OF NW 14 TERRACE

- NW 14 Terrace will be closed from NW 3 Avenue to NW 2 Avenue until further notice to allow the contractor to construct bridge foundations. Drivers can use NW 15 Street as an alternate.

## CLOSURE OF NW 13 STREET AT NW 1 COURT

- A section of NW 13 Street at NW 1 Court will be closed until further notice. The closure will allow the contractor to construct bridge caps for the new I-395 bridges.

TO VIEW A MAP OF THE DETOUR PLEASE [CLICK HERE](#)

## LONG-TERM CLOSURE OF NW 1 COURT

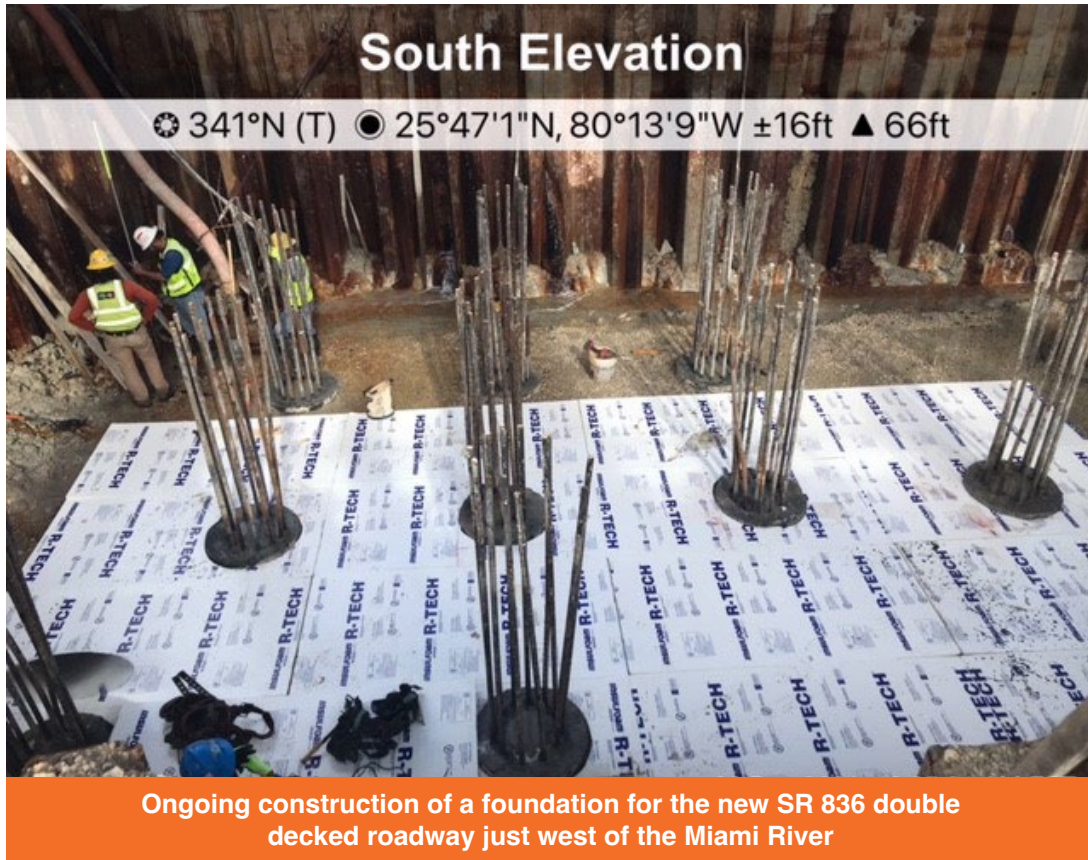
- NW 1 Court from NW 13 Street to NW 14 Street and NW 13 Street from NW 1 Avenue to NW 1 Court will remain continuously closed until further notice to allow the contractor to work on bridges over the roadways.

TO VIEW A MAP OF THE DETOUR PLEASE [CLICK HERE](#)

*Continue reading on the next page...*



## SR 836 ONGOING CONSTRUCTION ACTIVITIES



- Ongoing widening activities for the eastbound SR 836 ramp to northbound I-95
- Erection of bridge pier caps using the main support beam lifter on SR 836 median just west of NW 17 Avenue (**NIGHTTIME FULL CLOSURES OF SR 836 WILL BE IMPLEMENTED AS NEEDED**)
- Bridge widening activities on eastbound SR 836 over NW 14 Street and NW 10 Avenue
- Foundation construction just west of the Miami River under SR 836 in the Grove Park neighborhood
- Daytime driving of steel sheets into the ground under SR 836 from the Miami River to NW 17 Avenue
- Driving steel sheets into the ground under and adjacent to SR 836 from NW 7 Avenue to NW 17 Avenue
- Installation of concrete bridge beams for the widening of the approach to the eastbound SR 836 ramp to northbound I-95
- Pier construction in the median area of SR 836 between NW 17 Avenue and the toll gantry and just east of NW 17 Avenue
- Foundation construction at the Richard E. Gerstein Justice Building parking area
- Foundation construction east of NW 17 Avenue and under SR 836
- Foundation construction adjacent to NW 7 Avenue between NW 14 Street and NW 15 Street
- Roadway widening activities on eastbound SR 836 from NW 10 Avenue to I-95
- Ongoing casting of bridge caps

*Continue reading on the next page...*

## FULL CLOSURE OF SR 836 FOR INSTALLATION OF PIER CAPS

- Two travel lanes on eastbound and westbound SR 836 will be closed at 9 p.m., and all travel lanes will be closed from NW 17 Avenue to NW 12 Avenue as noted below:
- **THURSDAY, DECEMBER 9** – All eastbound travel lanes closed from 10 p.m. to 5:30 a.m. and all westbound travel lanes closed from 10:30 p.m. to 6 a.m.
- **MONDAY, DECEMBER 13** – All eastbound travel lanes closed from 10 p.m. to 5:30 a.m. and all westbound travel lanes will be closed from 10:30 p.m. to 6 a.m.
- **THURSDAY, DECEMBER 16** – All eastbound travel lanes closed from 10 p.m. to 5:30 a.m. and all westbound travel lanes will be closed from 10:30 p.m. to 6 a.m.
  - Drivers on westbound SR 836 can:
    - Exit at the NW 12 Avenue ramp, then turn left on NW 12 Avenue
    - Turn right on NW 7 Street
    - Turn right on NW 17 Avenue to connect with the westbound SR 836 ramp
  - Drivers on eastbound SR 836 can:
    - Exit at the NW 17 Avenue South (Ballpark) ramp, then turn right at NW 17 Avenue
    - Turn left at NW 7 Street
    - Turn left at NW 12 Avenue to connect with eastbound SR 836 ramp

TO VIEW A MAP OF THE DETOUR PLEASE [CLICK HERE.](#)

## SR 836 LANE CLOSURES

- **WEDNESDAY, DECEMBER 8 THROUGH FRIDAY, DECEMBER 10 AND SUNDAY, DECEMBER 12 THROUGH THURSDAY, DECEMBER 16** - Up to two lanes on eastbound SR 836 from NW 17 Avenue to I-95 will be closed as needed between the hours of 9 p.m. and 5:30 a.m.
- **WEDNESDAY, DECEMBER 8 THROUGH FRIDAY, DECEMBER 10 AND SUNDAY, DECEMBER 12 THROUGH THURSDAY, DECEMBER 16** - Up to two westbound lanes on SR 836 from I-95 to NW 17 Avenue will be closed as needed between the hours of 9 p.m. and 5:30 a.m.

*Continue reading on the next page...*

## EASTBOUND SR 836 RAMP TO NORTHBOUND I-95 DETOUR

- **THURSDAY, DECEMBER 9, MONDAY, DECEMBER 13 AND THURSDAY, DECEMBER 16** - The eastbound SR 836 ramp to northbound I-95 will be closed between the hours of 9 p.m. and 5:30 a.m. Drivers can:
  - Access the southbound I-95/NW 8 Street ramp, then exit at the NW 8 Street/PortMiami ramp
  - Turn left at NW 8 Street
  - Turn left at NW 3 Avenue to access the northbound I-95 ramp

TO VIEW A MAP OF THE DETOUR PLEASE [CLICK HERE](#)

**NOTE: DURING FULL CLOSURES OF EASTBOUND SR 836 AT NW 17 AVENUE, DRIVERS CAN USE THE FOLLOWING DETOUR TO ACCESS NORTHBOUND I-95:**

- Exit at the NW 17 Avenue South (Ballpark) ramp, then turn right at NW 17 Avenue
- Turn left at NW 7 Street, then turn left at NW 12 Avenue
- Turn right on NW 11 Street, then turn right on NW 8 Street Road
- Turn left on NW 8 Street
- Turn left on NW 3 Avenue to connect with the I-95 north ramp

TO VIEW A MAP OF THE DETOUR PLEASE [CLICK HERE](#)

## EASTBOUND SR 836 RAMP TO SOUTHBOUND I-95 DETOUR

- **TUESDAY, DECEMBER 14 AND WEDNESDAY, DECEMBER 15** - The eastbound SR 836 ramp to southbound I-95 will be closed between the hours of 10 p.m. and 5:30 a.m. Drivers can:
  - Continue east on I-395
  - Exit at NE 2 Avenue/Biscayne Boulevard (Exit 2A)
  - Turn right on NE 2 Avenue, then turn right on NE 11 Street
  - Turn right on NE 1 Avenue to access the I-95 south ramp

TO VIEW A MAP OF THE DETOUR PLEASE [CLICK HERE](#)

*Continue reading on the next page...*

## FULL NW 7 AVENUE CLOSURE

- **THURSDAY, DECEMBER 9 AND MONDAY, DECEMBER 13** - All travel lanes on NW 7 Avenue will be closed as needed from NW 17 Street to NW 14 Street between the hours of 10 p.m. and 5:30 a.m.
  - Drivers on northbound NW 7 Avenue can:
    - Turn left on NW 14 Street, then turn right on NW 12 Avenue
    - Turn right on NW 20 Street to connect with NW 7 Avenue
  - Drivers on southbound NW 7 Avenue can:
    - Turn right on NW 20 Street, then turn left on NW 12 Avenue
    - Turn left on NW 14 Street to connect with NW 7 Avenue
  - Drivers on NW 17 Street going south on NW 7 Avenue can:
    - Go west on NW 17 Street, then turn left on NW 9 Avenue
    - Make a slight right onto NW 10 Avenue
    - Turn left on NW 14 Street to connect with NW 7 Avenue

TO VIEW A MAP OF THE DETOUR PLEASE [CLICK HERE.](#)

## DAYTIME NW 7 AVENUE LANE CLOSURES

- **WEDNESDAY, DECEMBER 8 THROUGH FRIDAY, DECEMBER 10 AND SUNDAY, DECEMBER 12 THROUGH THURSDAY, DECEMBER 16** - One southbound lane on NW 7 Avenue will be closed as needed from NW 15 Street to NW 14 Street between the hours of 9 a.m. and 3:30 p.m.

## NORTHBOUND NW 17 AVENUE RAMP TO WESTBOUND SR 836 CLOSURE

- **WEDNESDAY, DECEMBER 8 THROUGH FRIDAY, DECEMBER 10 AND MONDAY, DECEMBER 13 THROUGH THURSDAY, DECEMBER 16** - The northbound NW 17 Avenue ramp to westbound SR 836 will be closed between the hours of 9 p.m. and 5:30 a.m.
  - Drivers on northbound NW 17 Avenue heading west on SR 836 can:
    - Turn west on NW 7 Street
    - Turn right on NW 27 Avenue to access the SR 836 west entrance ramp

TO VIEW A MAP OF THE DETOUR PLEASE [CLICK HERE.](#)

*Continue reading on the next page...*



## **SOUTHBOUND NW 17 AVENUE RAMP TO WESTBOUND SR 836 CLOSURE**

- **WEDNESDAY, DECEMBER 8 THROUGH FRIDAY, DECEMBER 10 AND MONDAY, DECEMBER 13 THROUGH THURSDAY, DECEMBER 16** - The southbound NW 17 Avenue ramp to westbound SR 836 will be closed between the hours of 9 p.m. and 5:30 a.m. Drivers can:
  - Turn west on NW 7 Street
  - Turn right on NW 27 Avenue to access the SR 836 west entrance ramp

TO VIEW A MAP OF THE DETOUR PLEASE [CLICK HERE](#).

**NOTE: THE NW 17 AVENUE RAMPS WILL NOT BE CLOSED AT THE SAME TIME. THE CLOSURES WILL BE STAGGERED.**

## **SOUTHBOUND NW 12 AVENUE RAMP TO EASTBOUND SR 836 DETOUR**

- **WEDNESDAY, DECEMBER 8 THROUGH FRIDAY, DECEMBER 10 AND MONDAY, DECEMBER 13 THROUGH THURSDAY, DECEMBER 16** - The southbound NW 12 Avenue ramp to eastbound SR 836 will be closed between the hours of 9 p.m. and 5:30 a.m. Drivers can:
  - Turn right on NW 14 Street
  - Turn left on NW 14 Avenue and continue along NW 11 Street
  - Turn left on NW 12 Avenue to access the SR 836 east entrance ramp

TO VIEW A MAP OF THE DETOUR PLEASE [CLICK HERE](#).

## **NORTHBOUND NW 12 AVENUE RAMP TO EASTBOUND SR 836 DETOUR**

- **WEDNESDAY, DECEMBER 8 THROUGH FRIDAY, DECEMBER 10 AND MONDAY, DECEMBER 13 THROUGH THURSDAY, DECEMBER 16** - The northbound NW 12 Avenue ramp to eastbound SR 836 will be closed between the hours of 10 p.m. and 5:30 a.m. Drivers can:
  - Continue north on NW 12 Avenue, then turn left on NW 12 Street
  - Turn right on NW 13 Avenue, then turn right on NW 14 Street
  - Turn right on NW 12 Avenue to access the southbound NW 12 Avenue entrance ramp to SR 836 east

TO VIEW A MAP OF THE DETOUR PLEASE [CLICK HERE](#).

**NOTE: THE NW 12 AVENUE RAMPS WILL NOT BE CLOSED AT THE SAME TIME. THE CLOSURES WILL BE STAGGERED.**

*Continue reading on the next page...*

## NW 14 STREET CLOSURE

- **WEDNESDAY, DECEMBER 8 AND MONDAY, DECEMBER 13 THROUGH THURSDAY, DECEMBER 16** - NW 14 Street will be closed as needed from NW 7 Avenue to NW 10 Avenue between the hours of 9 p.m. and 5:30 a.m.
  - Drivers on westbound NW 14 Street can:
    - Turn right on NW 7 Avenue, then turn left on NW 17 Street
    - Turn left on NW 9 Avenue and follow NW 10 Avenue to connect with NW 14 Street
  - Drivers on eastbound NW 14 Street can:
    - Turn left on NW 10 Avenue and follow NW 9 Avenue, then turn right on NW 17 Street
    - Turn right on NW 7 Avenue to connect with NW 14 Street

TO VIEW A MAP OF THE DETOUR PLEASE [CLICK HERE](#).

## NW 10 AVENUE DETOUR

- **WEDNESDAY, DECEMBER 8 THROUGH FRIDAY, DECEMBER 10 AND MONDAY, DECEMBER 13 THROUGH THURSDAY, DECEMBER 16** - NW 10 Avenue will be closed as needed from NW 13 Street to NW 14 Street starting between the hours of 9 p.m. and 5:30 a.m.
  - Northbound drivers on NW 10 Avenue can:
    - Go east on NW 13 Street
    - Turn left on NW 8 Avenue
    - Turn left on NW 14 Street to connect with NW 10 Avenue
  - Southbound drivers on NW 10 Avenue can:
    - Go east on NW 14 Street
    - Turn right on NW 8 Court
    - Turn right on NW 13 Street to access NW 10 Avenue

TO VIEW A MAP OF THE DETOUR PLEASE [CLICK HERE](#).

**NOTE: NW 10 AVENUE AND NW 14 STREET WILL NOT BE CLOSED AT THE SAME TIME. THE CLOSURES WILL BE STAGGERED.**

*Continue reading on the next page...*

## NW NORTH RIVER DRIVE/NW 11 STREET LANE CLOSURES

- **WEDNESDAY, DECEMBER 8 THROUGH FRIDAY, DECEMBER 10 AND MONDAY, DECEMBER 13 THROUGH THURSDAY, DECEMBER 16** - One NW North River Drive southbound lane will be closed from NW 12 Street and NW 13 Avenue as needed between the hours of 9 a.m. and 3:30 p.m. and 6 p.m. and 5 a.m.

---

### ABOUT THE PROJECT

The I-395/SR 836/I-95 Design-Build Project will add capacity, enhance the flow of traffic and safety and improve access along I-395, SR 836 and I-95.



**CLICK ON THE LINK TO LEARN MORE ABOUT THE PROJECT:**

[i395-miami.com/project-video](http://i395-miami.com/project-video)

---

**Please note that this schedule may change due to bad weather or other unforeseen conditions.**

The work is part of the I-395/SR 836/I-95 Design-Build Project that will reconstruct the I-395 corridor from the SR 836/I-395/I-95 (Midtown) Interchange to the MacArthur Causeway Bridge, including the construction of a Signature Bridge over NE 2 Avenue and Biscayne Boulevard; double-deck SR 836 from west of NW 17 Avenue to the Midtown Interchange and the replacement of the concrete pavement on I-95 from NW 8 Street to NW 29 Street.

For additional information on the project please contact Oscar Gonzalez at 786-280-0983 or via email at [ogonzalez@mrgmiami.com](mailto:ogonzalez@mrgmiami.com). Additional project information can be found on the project website, [www.I-395miami.com](http://www.I-395miami.com).

For information on scheduled lane closures on FDOT Construction Projects that affect traffic to/from and in Miami Beach, please [click here](#).