

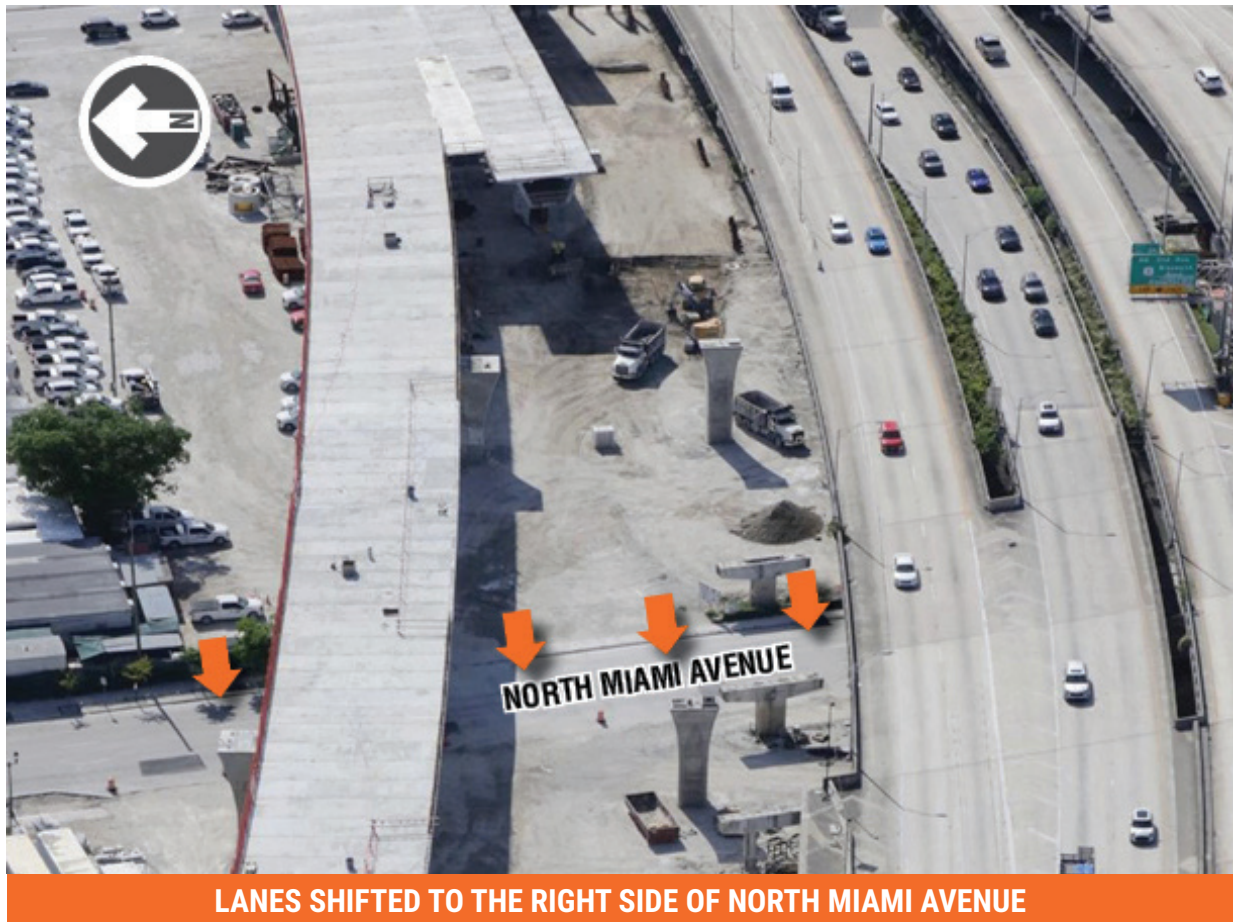
I-395/SR 836/I-95 DESIGN-BUILD PROJECT

Financial Project Numbers: 251688-1-52-01, 423126-1-52-01, 423126-2-52-01, 429300-2-52-01

6-14-2021

TRAFFIC SHIFT ON NORTH MIAMI AVENUE

- On **WEDNESDAY MORNING, JUNE 16**, all North Miami Avenue travel lanes will be shifted to the right side of the roadway from NW 13 Street to just north of NW 11 Terrace as shown below. In order to complete the traffic shift, two lanes on North Miami Avenue will be closed on **TUESDAY, JUNE 15** between the hours of 9 p.m. to 5:30 a.m.



Continue reading on the next page...

ABOUT THE PROJECT

The I-395/SR 836/I-95 Design-Build Project will add capacity, enhance the flow of traffic and safety and improve access along I-395, SR 836 and I-95.



To view a video of the project,
please visit:
I395-miami.com/project-video

Please note that this schedule may change due to bad weather or other unforeseen conditions.

The work is part of the I-395/SR 836/I-95 Design-Build Project that will reconstruct the I-395 corridor from the SR 836/I-395/I-95 (Midtown) Interchange to the MacArthur Causeway Bridge, including the construction of a Signature Bridge over NE 2 Avenue and Biscayne Boulevard; double-deck SR 836 from west of NW 17 Avenue to the Midtown Interchange and the replacement of the concrete pavement on I-95 from NW 8 Street to NW 29 Street.

For additional information on the test pile work or the project please contact Oscar Gonzalez at 786-280-0983 or via email at ogonzalez@mrgmiami.com. Additional project information can be found on the project website, www.I-395miami.com.

For information on scheduled lane closures on FDOT Construction Projects that affect traffic to/from and in Miami Beach, please [click here](#).