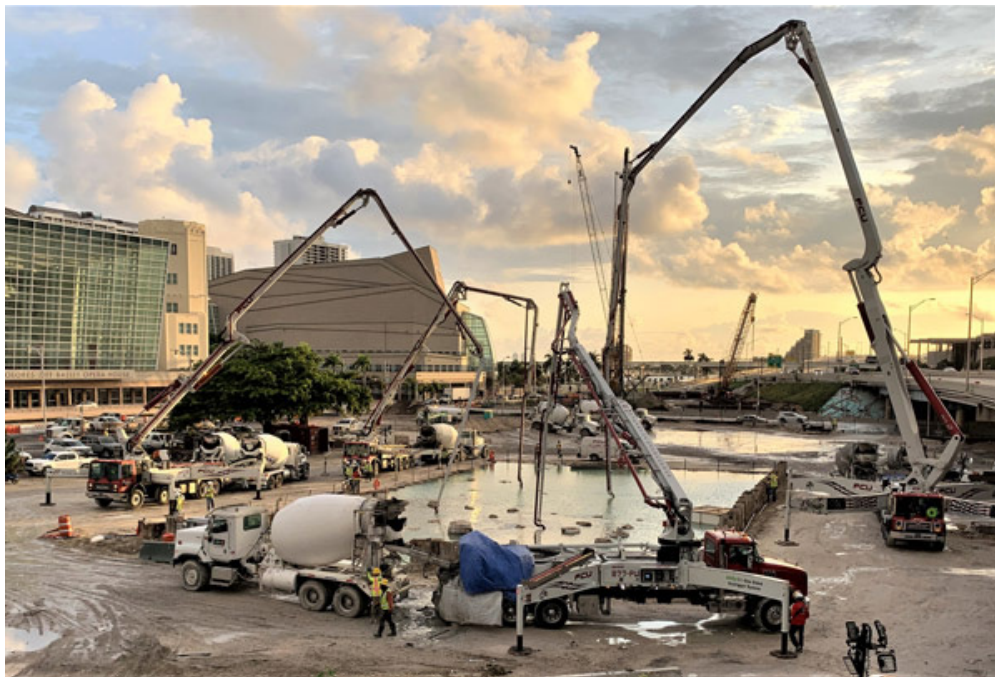


I-395/SR 836/I-95 DESIGN-BUILD PROJECT

Financial Project Numbers: 251688-1-52-01, 423126-1-52-01, 423126-2-52-01, 429300-2-52-01

10-12-2020

SIGNATURE BRIDGE CENTER PIER SEAL SLAB POUR COMPLETED



On **Saturday, October 10**, the contractor for the I-395/SR 836/I-95 Design-Build completed the concrete pour for the signature bridge center pier seal slab. 226 trucks delivered concrete to the site that was then pumped to the bottom of the footer to seal the floor. Once the concrete cures, the water can be pumped out and crews can begin to construct the footer rebar cage. Once completed with the rebar cage, the footer will be poured out using approximately 500 concrete trucks and four concrete pumps.

Continue reading on the next page...

ABOUT THE PROJECT

The I-395/SR 836/I-95 Design-Build Project will add capacity, enhance the flow of traffic and safety and improve access along I-395, SR 836 and I-95.



CLICK ON THE LINK TO LEARN MORE ABOUT THE PROJECT:

<http://www.i395-miami.com/project-video>

Please note that this schedule may change due to bad weather or other unforeseen conditions.

The work is part of the I-395/SR 836/I-95 Design-Build Project that will reconstruct the I-395 corridor from the SR 836/I-395/I-95 (Midtown) Interchange to the MacArthur Causeway Bridge, including the construction of a Signature Bridge over NE 2 Avenue and Biscayne Boulevard; double-deck SR 836 from west of NW 17 Avenue to the Midtown Interchange and the replacement of the concrete pavement on I-95 from NW 8 Street to NW 29 Street.

For additional information on the test pile work or the project please contact Oscar Gonzalez at 786-280-0983 or via email at ogonzalez@mrgmiami.com. Additional project information can be found on the project website, www.I-395miami.com.

For information on scheduled lane closures on FDOT Construction Projects that affect traffic to/from and in Miami Beach, please [click here](#).