



# I-395/SR 836/I-95 DESIGN-BUILD PROJECT

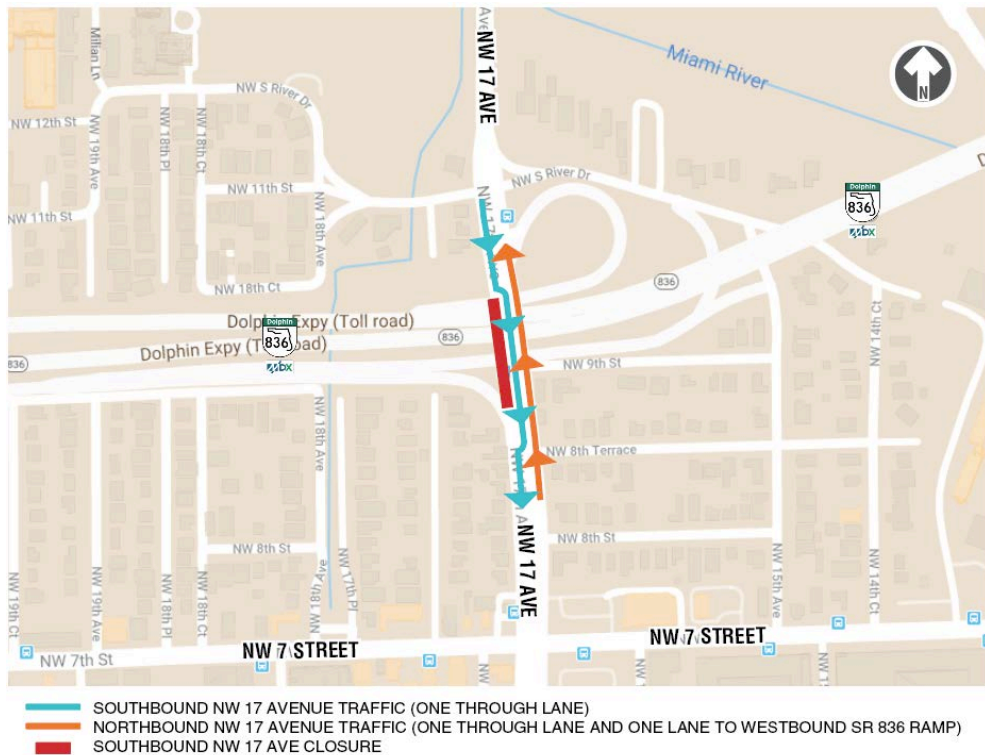
Financial Project Numbers: 251688-1-52-01, 423126-1-52-01, 423126-2-52-01, 429300-2-52-01

04-17-2020

## LANE CLOSURE ALERT

### DAYTIME SOUTHBOUND NW 17 AVENUE CLOSURE AND TRAFFIC DIVERSION

- MONDAY, APRIL 20 THROUGH FRIDAY, APRIL 24** - The southbound lanes on NW 17 Avenue will be closed from just north of SR 836 to south of NW 9 Street between the hours of 8 a.m. and 5 p.m. Drivers heading south on NW 17 Avenue will be diverted to the left side of the roadway, where one northbound lane will be temporarily converted to a southbound lane. Once drivers are past the closure area, they will be diverted back to the southbound lanes. See map below:



Continue reading on the next page...

---

## ABOUT THE PROJECT

The I-395/SR 836/I-95 Design-Build Project will add capacity, enhance the flow of traffic and safety and improve access along I-395, SR 836 and I-95.



To view a video of the project,  
please visit:

[I395-miami.com/project-video](http://I395-miami.com/project-video)

---

**Please note that this schedule may change due to bad weather or other unforeseen conditions.**

The work is part of the I-395/SR 836/I-95 Design-Build Project that will reconstruct the I-395 corridor from the SR 836/I-395/I-95 (Midtown) Interchange to the MacArthur Causeway Bridge, including the construction of a Signature Bridge over NE 2 Avenue and Biscayne Boulevard; double-deck SR 836 from west of NW 17 Avenue to the Midtown Interchange and the replacement of the concrete pavement on I-95 from NW 8 Street to NW 29 Street.

For additional information on the test pile work or the project please contact Oscar Gonzalez at 786-280-0983 or via email at [ogonzalez@mrgmiami.com](mailto:ogonzalez@mrgmiami.com). Additional project information can be found on the project website, [www.I-395miami.com](http://www.I-395miami.com).

For information on scheduled lane closures on FDOT Construction Projects that affect traffic to/from and in Miami Beach, please [click here](#).

---